



**BRONDESBURY PARK MANSIONS, SALUSBURY ROAD, LONDON, NW6
£965,000 LEASEHOLD**

A THREE BEDROOM, TWO BATHROOM, FIRST FLOOR FLAT IN A STUNNING PERIOD MANSION BUILDING BOASTING MODERN FINISHES AND SPACIOUS OPEN PLAN LIVING WITH DIRECT ACCESS TO COMMUNAL GARDENS.

Kensal Rise & Queens Park | 0208 960 4947 | kensalrise@winkworth.co.uk

Winkworth



LOCATION:

Ideally located within a couple minutes' walk of Queens Park Underground and Overground Station (Zone 2 Bakerloo line), allowing for quick and convenient access to Central London within 10 minutes and Euston within 7 minutes. There are an array of amenities along Salusbury Road including a number of gastropubs, coffee shops and independent boutiques. Queens Park itself is also right on your doorstep.



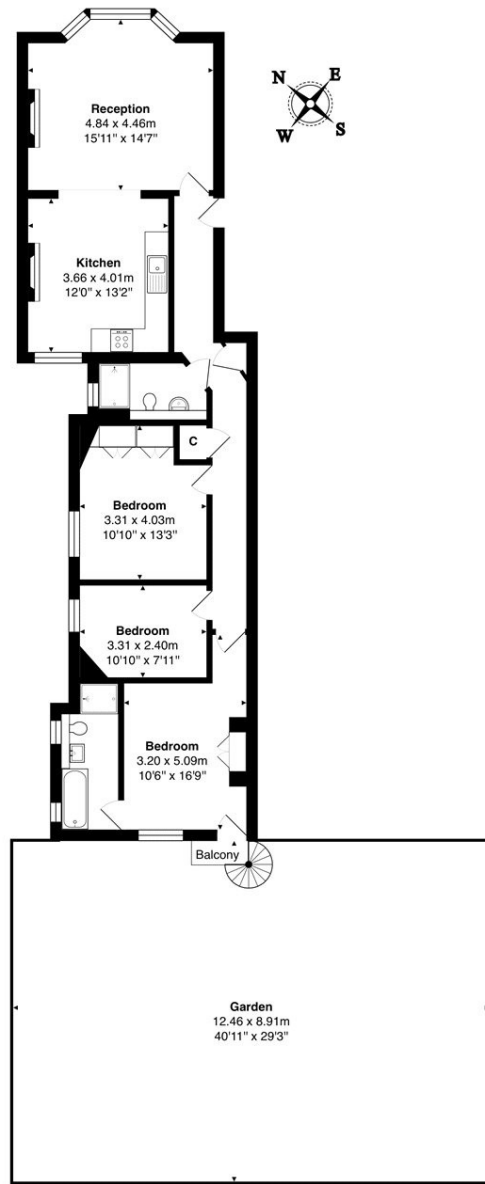
Winkworth



DESCRIPTION:

Set within a beautiful Mansion building, this three bedroom, two bathroom, first floor flat offers ample space with open plan living. All bedrooms are doubles, with one benefitting from an en-suite bathroom. The front reception room has a feature fireplace, sash windows and hard wood flooring which opens up to a bright and airy open plan and contemporary kitchen, with space for a large dining table. Leading out from the rear bedroom, you have access via spiral staircase down to a beautifully kept communal garden - perfect for summer BBQ's and entertaining. The property further benefits from being offered with no-upper chain.

Winkworth



1st Floor

Total Area: 95.6 m² ... 1029 ft² (excluding garden)

All measurements are approximate and for display purposes only

This floorplan is for illustration purposes only and is not to scale. The position and size of doors, windows, appliances and other features are approximate.

Kensal Rise & Queens Park | 0208 960 4947 | kensalrise@winkworth.co.uk

Winkworth

winkworth.co.uk

See things differently

winkworth wishes to inform prospective buyers and tenants that these particulars are a guide and act as information only. All our details are given in good faith and believed to be correct at the time of printing but they don't form part of an offer or contract. No Winkworth employee has authority to make or give any representation or warranty in relation to this property. All fixtures and fittings, whether fitted or not are deemed removable by the vendor unless stated otherwise and room sizes are measured between internal wall surfaces, including furnishings.