



MOORDOWN, SHOOTERS HILL, LONDON, SE18 3ND
£699,995 FREEHOLD

A SUPERB AND EXTENDED FOUR BEDROOM, TWO RECEPTION ROOM, 1930'S SEMI-DETACHED HOUSE WITH A LARGE GARDEN, LOCATED IN THIS POPULAR RESIDENTIAL AREA AND JUST 1.3 MILES FROM WOOLWICH STATION WITH MAINLINE RAIL, THAMESLINK, DLR AND THE NEWLY OPENED ELIZABETH LINE.

Blackheath | 0208 8520999 | blackheath@winkworth.co.uk

Winkworth

winkworth.co.uk

See things differently



DESCRIPTION:

The accommodation comprises; entrance hall with under stairs storage, living room with bay window and fireplace as well as a second reception/family room. To the rear is a large and extended modern open plan kitchen with island and dining area, there is also a downstairs cloakroom. Upstairs are three double bedrooms, one with an en suite bathroom and a lovely modern family bathroom. To the rear is a large south facing garden extending to approx 100ft with raised deck, lawn, and well maintained flowerbeds. The property is in excellent decorative order with double glazed windows, wood flooring and gas fired central heating.

This is a great family home and your immediate viewing is recommended. Video tour can be seen at Winkworth.co.uk

Moordown is a quiet residential road which offers ample bus links into Greenwich, Blackheath Village and Woolwich, so you can take advantage of the outstanding train links, bars, cafés and shopping facilities. You are also surrounded by many green spaces including the historic Oxleas woods, Eaglesfield Recreation Ground and Shooters Hill golf course. The iconic Serverndroog castle is only a short walk away so you can enjoy breathtaking views from one of the highest points in London and enjoy the popular tea rooms. Woolwich Arsenal station provides access to mainline rail, the DLR and the newly opened Elizabeth Line. There are three primary schools within walking distance, very good secondary schools in Greenwich borough and grammar schools in Bexley borough.

AT A GLANCE

- end of terrace house
- four bedrooms
- extended kitchen diner
- excellent condition
- large south facing garden
- close to Oxleas Wood
- 1,353 sq. ft



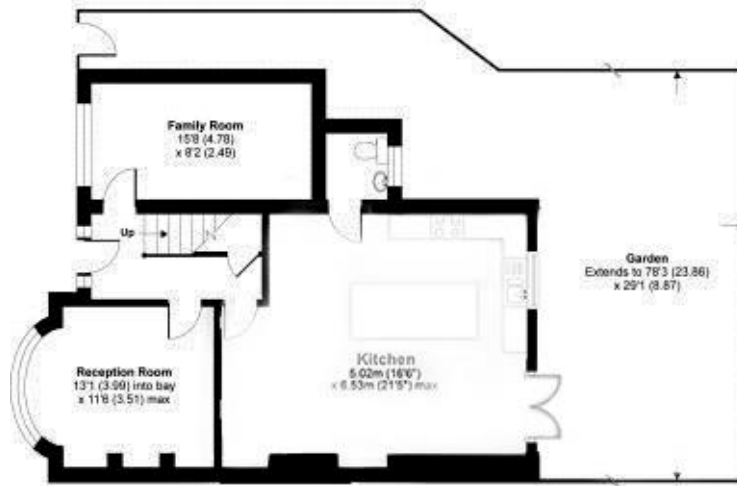


Moordown, London, SE18

APPROX. GROSS INTERNAL FLOOR AREA 1353 SQ FT 125.6 SQ METRES



FIRST FLOOR



GROUND FLOOR

This floorplan is for illustration purposes only and is not to scale. The position and size of doors, windows, appliances and other features are approximate. Any lease and service charge details have been provided by the vendor. Any interest party should have these checked by a solicitor as part of the purchase process.

Blackheath | 0208 8520999 | blackheath@winkworth.co.uk

Winkworth

winkworth.co.uk

See things differently

Winkworth wishes to inform prospective buyers and tenants that these particulars are a guide and act as information only. All our details are given in good faith and believed to be correct at the time of printing but they don't form part of an offer or contract. No Winkworth employee has authority to make or give any representation or warranty in relation to this property. All fixtures and fittings, whether fitted or not are deemed removable by the vendor unless stated otherwise and room sizes are measured between internal wall surfaces, including furnishings.