



HAMILTON TERRACE, NW8 £5,500 PER WEEK UNFURNISHED

A Grade II listed detached 4332 sqft Victorian Villa located on the West side of Hamilton Terrace. The property offers bright and spacious family accommodation with secure off street parking and garage. The 121 ft mature West facing garden is a wonderful and rare attraction to be found in the area. The house offers a variety of rooms for entertainment and living along with five bedrooms and separate staff accommodation.

Formal Double Reception Room | Dining Room | Family Room | Conservatory | Kitchen | Utility Room | 121 ft West Facing Garden | Five Bedrooms | Four Bathrooms | Staff Accommodation | WC | Off Street Parking | Garage

View our virtual tour here: <https://youtu.be/R5j89nH0Qu4>

Winkworth

for every step...

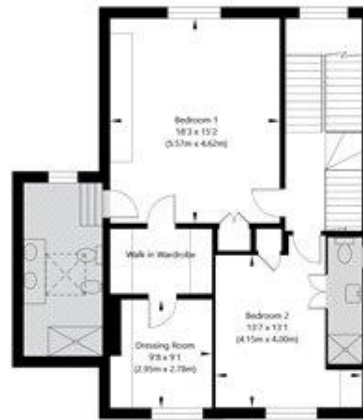
[winkworth.co.uk/st-johns-wood](https://www.winkworth.co.uk/st-johns-wood)



Hamilton Terrace, London NW8 9RE



Lower Ground Floor
 GROSS INTERNAL FLOOR AREA
 APPROX. 135.17 SQ M / 1455 SQ FT



First Floor
 GROSS INTERNAL FLOOR AREA
 APPROX. 83.74 SQ M / 901 SQ FT



Ground Floor
 GROSS INTERNAL FLOOR AREA
 APPROX. 110.91 SQ M / 1194 SQ FT

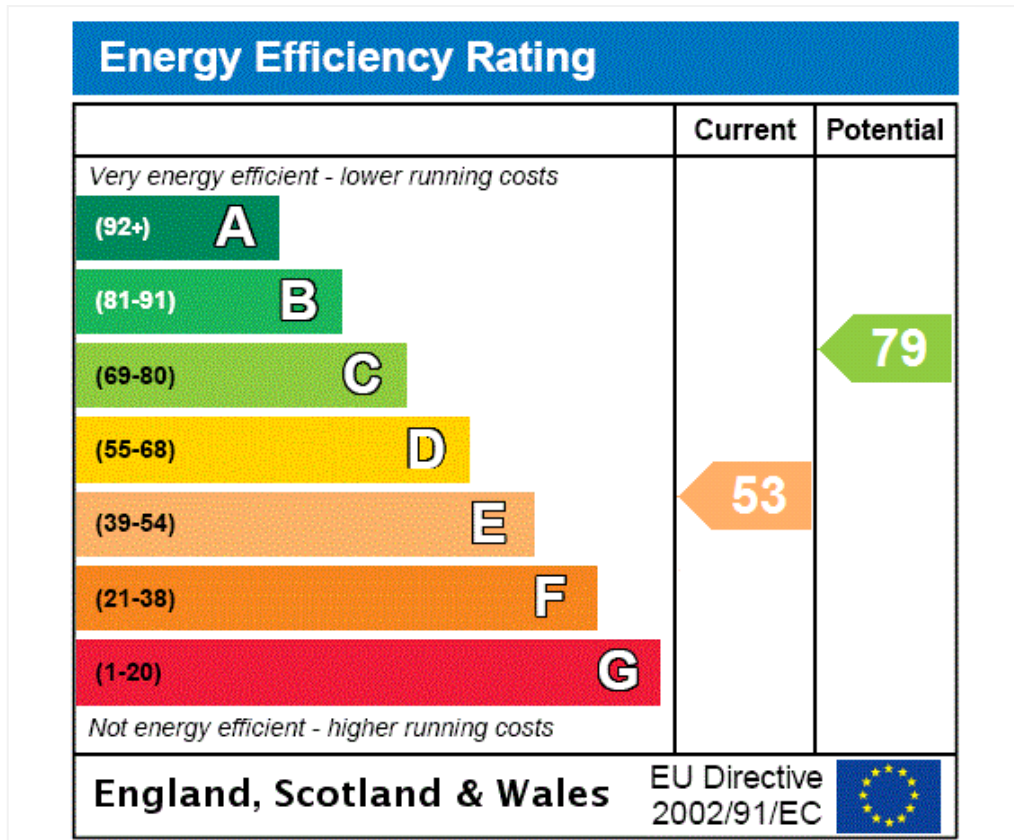


Second Floor
 GROSS INTERNAL FLOOR AREA
 APPROX. 72.68 SQ M / 782 SQ FT

APPROXIMATE GROSS INTERNAL FLOOR AREA 402.5 SQ M / 4332 SQ FT

THIS FLOOR PLAN IS FOR ILLUSTRATIVE PURPOSES ONLY AND SHOULD BE USED FOR THIS PURPOSE BY PROSPECTIVE APPLICANTS AS ITS NOT TO SCALE.

(c) AMBERSHORE PIX LIMITED / PHOTO - VIDEO - FLOOR PLANS / 0800 999 1577 / WWW.AMERSHOREPIX.CO.UK



Tenancy Deposit: £33,000.00

Holding Deposit: 1 weeks rent where the rent is up to £50,000 per annum, 2 weeks rent where the rent is over £50,000 per annum

Council Tax Band: H

Where no figures are shown, we have been unable to ascertain the information. All figures that are shown were correct at the time of printing.

Where no figures are shown, we have been unable to ascertain the information. All figures that are shown were correct at the time of printing.

These particulars are not an offer or contract, nor part of one. You should not rely on statements by Winkworth in the particulars or by word of mouth or in writing "information" as being factually accurate about the property, its condition or its value. Winkworth does not have any authority to make any representations about the property, and accordingly any information given is entirely without responsibility on the part of the agents, seller(s) or lessor(s). These particulars are prepared on the basis of the information supplied by our client and are a rough guide for information only. The photographs show only certain parts of the property. We are not able to check all of the information and therefore are unable to guarantee accuracy. All interested parties are therefore advised to undertake all necessary inspections and checks that they deem appropriate. Where displayed, the square footage is taken from the floor plans, which are created by an independent supplier. These measurements are approximate and included for illustrative purposes only. The measurements may vary. Winkworth does not make any representation as to the accuracy of these measurements and you should seek to verify them for yourself. Winkworth accept no liability for any loss you may suffer if you rely on these measurements. All fixtures and fittings, whether fitted or not are deemed removable by the vendor unless stated. Any reference to alterations to, or use of, any part of the property does not mean that any necessary planning, building regulations or other consent has been obtained. Amenities and appliances have not been tested

St John's Wood | 103-104 St. Johns Wood Terrace, London, NW8 6PL | 020 7586 7001 |

Winkworth

for every step...

winkworth.co.uk/st-johns-wood

Winkworth wishes to inform prospective buyers and tenants that these particulars are a guide and act as information only. All our details are given in good faith and believed to be correct at the time of printing but they don't form part of an offer or contract. No Winkworth employee has authority to make or give any representation or warranty in relation to this property. All fixtures and fittings, whether fitted or not are deemed removable by the vendor unless stated otherwise and room sizes are measured between internal wall surfaces, including furnishings.