



TOOTING BEC GARDENS, SW16
£475,000 LEASEHOLD

A SPACIOUS, TOP FLOOR VICTORIAN TWO BEDROOM APARTMENT BY TOOTING BEC COMMON

Streatham | 020 8769 6699 | streatham@winkworth.co.uk

Winkworth

for every step...

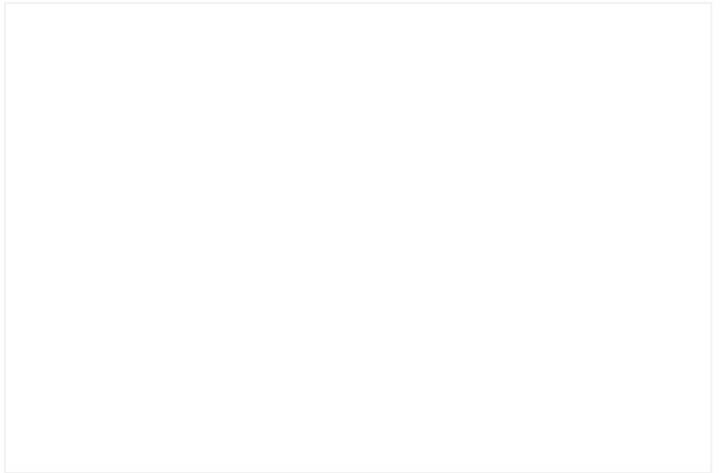
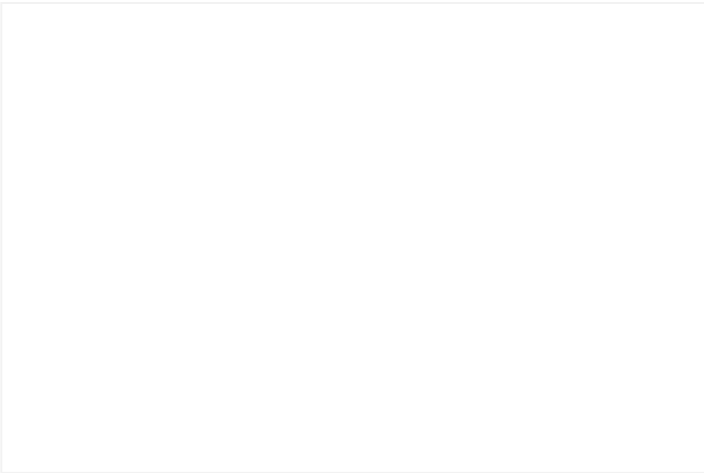
winkworth.co.uk



DESCRIPTION

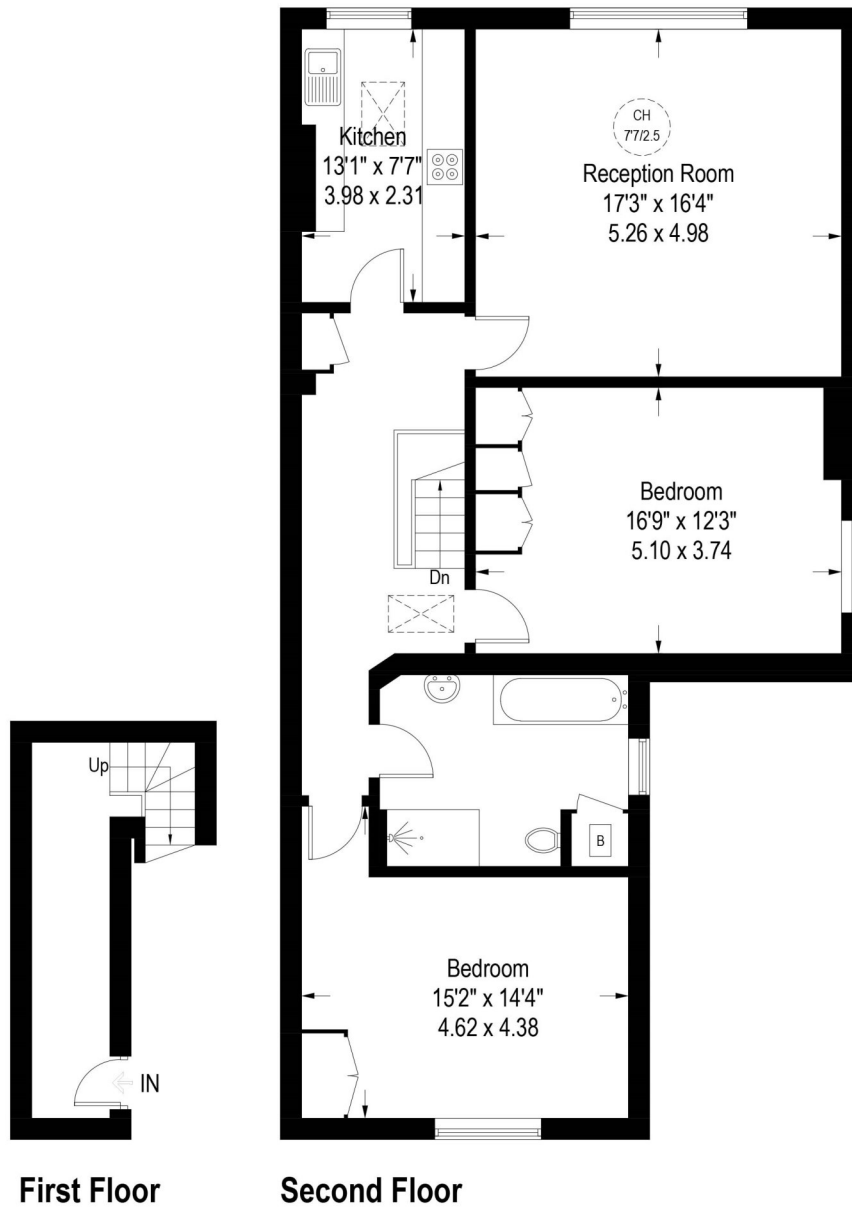
Nestled within an attractive late Victorian semi-detached house near Tooting Bec Common, the layout comprises an entrance hall guiding you upstairs to the second floor. On this level, you'll find a spacious hallway with a storage cupboard, a generously sized reception room with wood flooring, and a large window. A separate fitted galley kitchen offers abundant worktop space and fitted wall and base cabinets. The two double bedrooms both feature ample windows and fitted storage cupboards. The full-size bathroom includes a bathtub, a shower enclosure, a wash hand basin, and a WC.

Tooting Bec Gardens is a charming tree-lined residential road, predominantly featuring late Victorian and Edwardian houses near St Leonard's Church, close to Streatham High Road. It enjoys proximity to reputable local schools and an array of shops and amenities in Streatham and Tooting/Balham. Effortless transport connections ensure easy access to the City and West End.



Tooting Bec Gardens, London, SW16

Approximate Gross Internal Area = 1126 sq ft / 104.6 sq m



First Floor

Second Floor

Illustration for identification purposes only, measurements are approximate, not to scale. (ID1028145)

This floorplan is for illustration purposes only and is not to scale. The position and size of doors, windows, appliances and other features are approximate.

Tenure: Leasehold

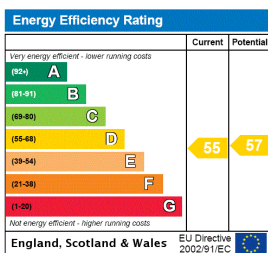
Term: 141 year and 3 months

Service Charge: £0 per annum

Ground Rent: £ 0 Annually (subject to increase)

Council Tax Band: D

Where no figures are shown, we have been unable to ascertain the information. All figures that are shown were correct at the time of printing.



Streatham | 020 8769 6699 | streatham@winkworth.co.uk



for every step...

winkworth.co.uk

Winkworth wishes to inform prospective buyers and tenants that these particulars are a guide and act as information only. All our details are given in good faith and believed to be correct at the time of printing but they don't form part of an offer or contract. No Winkworth employee has authority to make or give any representation or warranty in relation to this property. All fixtures and fittings, whether fitted or not are deemed removable by the vendor unless stated otherwise and room sizes are measured between internal wall surfaces, including furnishings.