



MINARD ROAD, LONDON, SE6
£850,000 FREEHOLD

Forest Hill | | foresthill@winkworth.co.uk



for every step...

winkworth.co.uk



DESCRIPTION:

This beautifully presented Corbett family home has undergone extensive renovations throughout by the current owners and combines an exceptional blend of modern living, period charm, comfort, and functionality.



Winkworth

for every step...

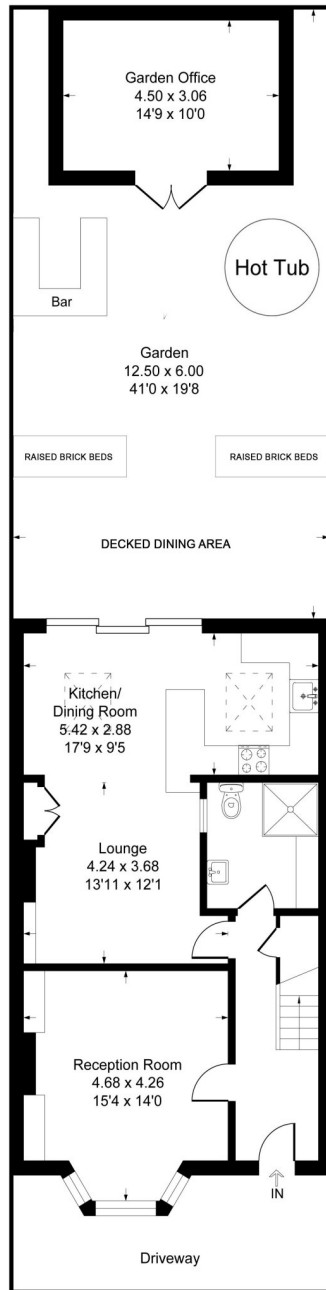


Winkworth

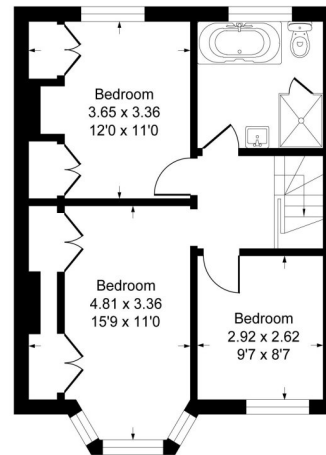
for every step...

Minard Road, SE6

Approximate Gross Internal Area 116.1 sq m / 1250 sq ft
 Outbuilding Area 13.7 sq m / 148 sq ft
 Total Area 129.9 sq m / 1398 sq ft



Ground Floor



First Floor

This Plan is for layout guidance only. Not drawn to scale unless stated. Windows and door openings are approximate. Whilst every care is taken in the preparation of this plan, please check all dimensions shapes and compass bearings before making any decisions reliant upon them. Produced by Squarefootphoto.co.uk



This floorplan is for illustration purposes only and is not to scale. The position and size of doors, windows, appliances and other features are approximate.

Energy Efficiency Rating		Current	Potential
Very energy efficient - lower running costs			
(92)	A		85
(81-91)	B		
(69-80)	C		
(55-68)	D	73	
(39-54)	E		
(21-58)	F		
(1-20)	G		
Not energy efficient - higher running costs			
England, Scotland & Wales		EU Directive 2002/91/EC	

COUNCIL TAX BAND- D

LOCAL AUTHORITY - Lewisham TENURE- Freehold

SERVICES: Mains Electric, Gas, Drainage & Water.

BROADBAND: Ultrafast, Superfast & Standard Broadband Available. Checked on Openreach Oct 2024.

MOBILE SIGNAL: You are likely to have limited voice coverage with some mobile providers, you are likely to have limited data coverage with most providers

HEATING: Gas Central Heating



NOTICE: Whilst every effort has been made to ensure the accuracy of these sales details, they are for guidance purposes only and prospective purchasers are advised to seek their own professional advice as well as to satisfy themselves by inspection or otherwise as to their correctness. No representation or warranty whatsoever is made in relation to this property by Winkworth or its employees nor do such sales details form part of any offer or contract.

for every step...

winkworth.co.uk

Winkworth wishes to inform prospective buyers and tenants that these particulars are a guide and act as information only. All our details are given in good faith and believed to be correct at the time of printing but they don't form part of an offer or contract. No Winkworth employee has authority to make or give any representation or warranty in relation to this property. All fixtures and fittings, whether fitted or not are deemed removable by the vendor unless stated otherwise and room sizes are measured between internal wall surfaces, including furnishings.