



NEWBRIDGE ROAD, SOMERSET, BA1  
**£750,000 FREEHOLD**

**Winkworth**





## NEWBRIDGE ROAD, SOMERSET, BA1

**Drawing Room | Sitting Room | Kitchen | Dining Room | Master Bedroom with En Suite Shower Room | 3 Further Bedrooms | Family Bathroom | Shower Room | Large Southerly Facing Garden.**

A four bedroom semi-detached Victorian House in the popular Newbridge area of Bath.

The accommodation is arranged over three storeys; the entrance hall leads to a magnificent drawing room with bay window and working fire. There are double doors leading into the sitting room.

On the garden level, there is an impressive kitchen / dining room with French doors onto the south facing garden. There is also a downstairs loo / shower room.

Upstairs there are four bedrooms as well as a family bathroom and en suite shower room to the master bedroom. The rest of the accommodation is on the lower ground floor, with a kitchen at the front of the house, leading through double doors to the dining room and with French doors onto the rear garden. The rear garden is southerly facing.

The property has a wealth of period features throughout and is presented in immaculate condition.

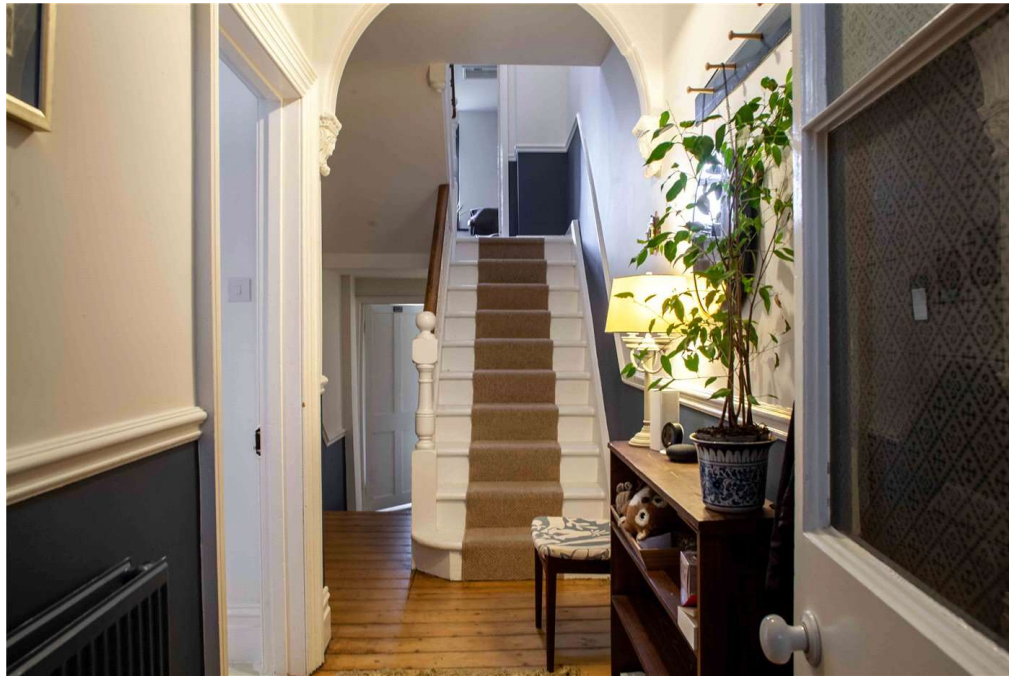
There is on street unrestricted parking on Newbridge Road.

### Location

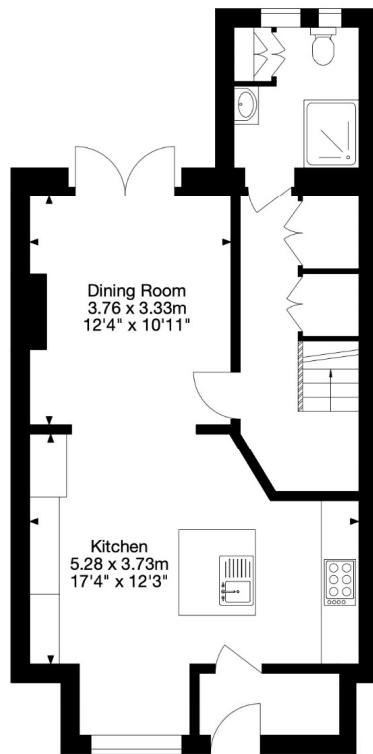
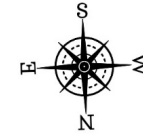
Newbridge is a sought-after area approximately 2 miles from the centre of Bath. There are plenty of amenities on Chelsea Road including a Spa, bakery, greengrocer, coffee shops and cafes, post office. The area also has a GP surgery, dentist and vets. There are great schools, Newbridge Junior and Oldfield Senior School.



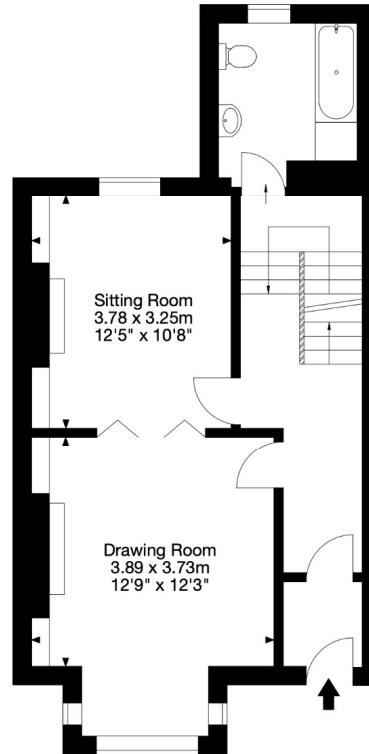




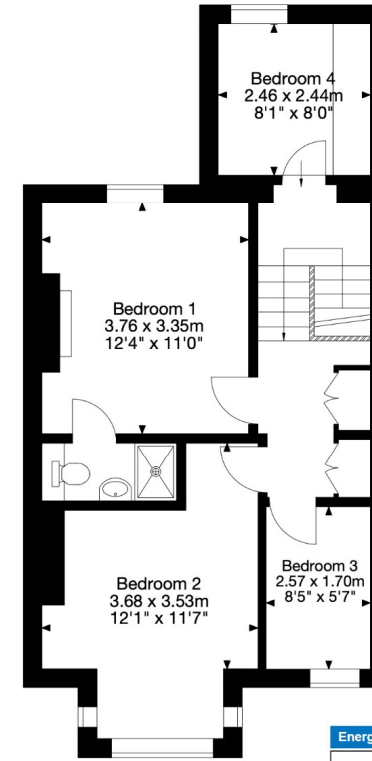
97 Newbridge Road, Bath BA1 3HG  
 Gross Internal Area (Approx.)  
 151 sq m / 1,634 sq ft



Lower Ground Floor

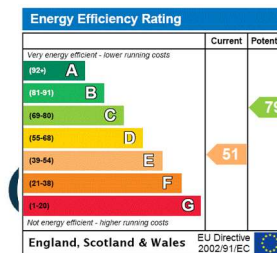


Ground Floor



First Floor

Capture Property Marketing 2022. Drawn to RICS guidelines.  
 All Measurements are approximate and should not be relied on as a statement of fact.  
 Plan is for illustration purposes only. Not drawn to scale.



Bath | 01225 829 000 | bath@winkworth.co.uk

winkworth.co.uk

Winkworth wishes to inform prospective buyers and tenants that these particulars are a guide and act as information only. All our details are given in good faith and believed to be correct at the time of printing but they don't form part of an offer or contract. No Winkworth employee has authority to make or give any representation or warranty in relation to this property. All fixtures and fittings, whether fitted or not are deemed removable by the vendor unless stated otherwise and room sizes are measured between internal wall surfaces, including furnishings.

