



HULFORD APARTMENTS, CHARLTON, LONDON, SE7
£365,000 LEASEHOLD

WE ARE DELIGHTED TO OFFER THIS IMMACULATE ONE BEDROOM, 5TH FLOOR, APARTMENT THAT MEASURES CIRCA 584 SQ FT AND IS WELL LOCATED JUST MOMENTS FROM CHARLTON MAINLINE RAIL.

Greenwich | 02030533033 | greenwich@winkworth.co.uk

Winkworth

winkworth.co.uk

See things differently



DESCRIPTION:

We are delighted to offer this immaculate one bedroom, 5th floor, apartment that measures circa 584 sq ft and is well located just moments from Charlton mainline rail.

In excellent order throughout, this larger than average flat features a bright 26ft reception room, with open plan kitchen that comes equipped with all the usual fitted white goods. This leads in turn onto a north facing balcony with far reaching views. There is a good sized double bedroom with fitted wardrobes and a beautiful family bathroom. Added features include double glazing, ample storage and video entry. There are also communal grounds to the rear.

Hulford Apartments is a newly built development that sits on Woolwich Road, and is adjacent to a huge M&S and Sainsbury, plus a wide array of other shops within the retail park. Along with rail, Charlton Village is also just a short walk away. Greenwich town centre and O2 arena are also close by. Your earliest viewing is highly recommended.

AT A GLANCE

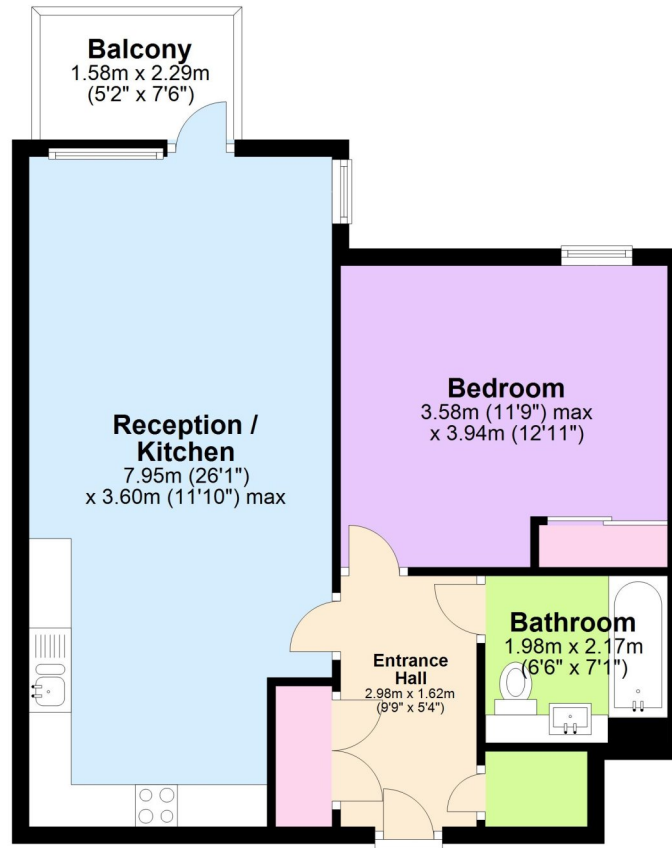
- one bedroom apartment
- immaculate condition
- circa 584 sq ft
- 5th floor with lift
- large 26ft kitchen/living room
- balcony to rear
- ample storage
- beautiful bathroom
- moments from mainline rail
- adjacent to Sainsbury/M&S





Fifth Floor

Approx. 54.3 sq. metres (584.8 sq. feet)



Total area: approx. 54.3 sq. metres (584.8 sq. feet)

This floorplan is for illustration purposes only and is not to scale. The position and size of doors, windows, appliances and other features are approximate.

Greenwich | 02030533033 | greenwich@winkworth.co.uk

Winkworth

winkworth.co.uk

See things differently

Winkworth wishes to inform prospective buyers and tenants that these particulars are a guide and act as information only. All our details are given in good faith and believed to be correct at the time of printing but they don't form part of an offer or contract. No Winkworth employee has authority to make or give any representation or warranty in relation to this property. All fixtures and fittings, whether fitted or not are deemed removable by the vendor unless stated otherwise and room sizes are measured between internal wall surfaces, including furnishings.