



ASHFIELD STREET, LONDON, E1
£700,000 LEASEHOLD

A HIGHLY IMPRESSIVE AND TASTEFULLY DECORATED PERIOD CONVERSION NEXT TO DESIRABLE SIDNEY SQUARE

Shoreditch | 020 7749 7650 | shoreditch@winkworth.co.uk

Winkworth



DESCRIPTION:

The property boasts high ceilings, solid oak flooring and sash windows, it is immaculately presented and has been tastefully decorated with great attention to detail by the current owners and is a great example of a period property with contemporary features.

On entry to the property, you have stairs leading to the second floor, a master bedroom with built in wardrobes, a good size second double bedroom, there is also a separate WC with wash hand basin and a wall mounted Worcester combination boiler.

On the third floor you enter a light and bright 15ft open plan living room/diner, modern fitted kitchen and shower room. The kitchen has built in appliances including; fridge/freezer, electric Samsung cooker and hob, dishwasher and space for washer dryer; the shower room has tiled flooring and partially tiled walls, mirrored vanity cupboard and heated chrome towel rail.

The property is ideally located in the centre of Whitechapel offering fantastic access to both the City and Canary Wharf. You have Whitechapel station (Crossrail) as well as Shadwell overground and DLR close by. You also have Brick Lane and Spitalfields in easy walking distance, that offer an array of local amenities, shops, bars and restaurants.

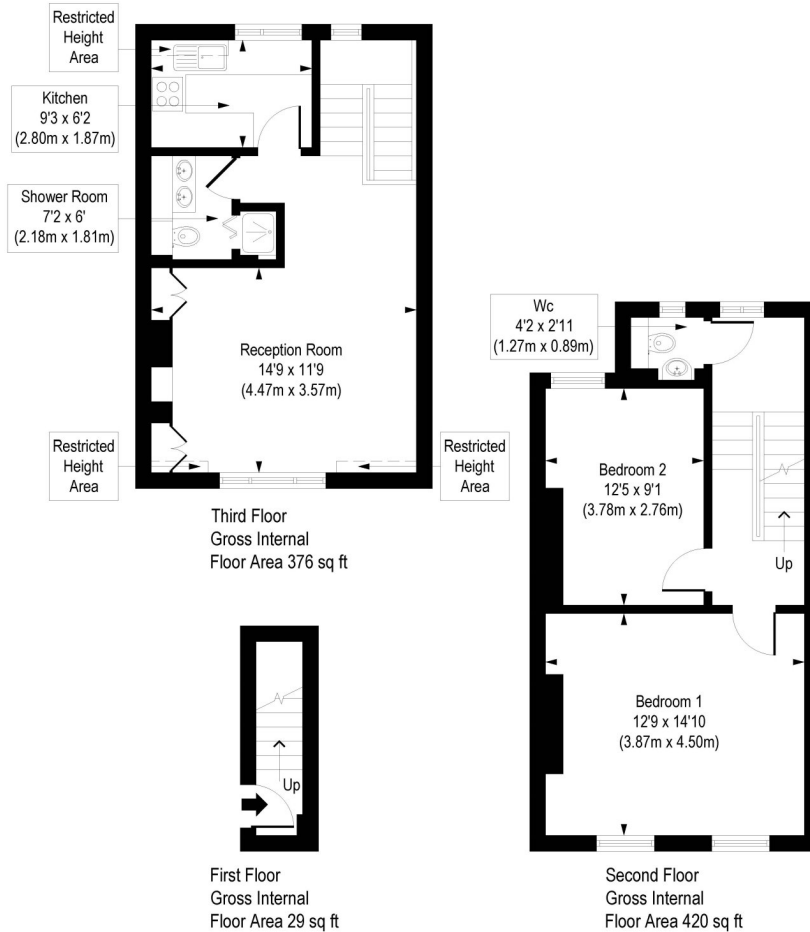
Winkworth



Winkworth

Ashfield Street, E1

Approx. Gross Internal Floor Area 825 sq. ft / 76.71 sq. m (Including Restricted Height Area)
Approx. Gross Internal Floor Area 816 sq. ft / 75.87 sq. m (Excluding Restricted Height Area)



COMPLIANT WITH RICS CODE OF MEASURING PRACTICE. Floorplan is for illustrative purposes only and is not to scale. Every attempt has been made to ensure the accuracy of the floorplan shown, however all measurements, fixtures, fittings and data shown are an approximate interpretation for illustrative purposes only. Liability for errors, omissions or mis-statement through negligence or otherwise is hereby excluded.

This floorplan is for illustration purposes only and is not to scale. The position and size of doors, windows, appliances and other features are approximate.

Shoreditch | 020 7749 7650 | shoreditch@winkworth.co.uk

Winkworth

winkworth.co.uk

See things differently

Winkworth wishes to inform prospective buyers and tenants that these particulars are a guide and act as information only. All our details are given in good faith and believed to be correct at the time of printing but they don't form part of an offer or contract. No Winkworth employee has authority to make or give any representation or warranty in relation to this property. All fixtures and fittings, whether fitted or not are deemed removable by the vendor unless stated otherwise and room sizes are measured between internal wall surfaces, including furnishings.