



CLARE LANE, LONDON, N1  
£495,000 SHARE OF FREEHOLD

## A FANTASTIC ONE BEDROOM APARTMENT IN THE HEART OF ISLINGTON

Islington | 0207 354 2480 | [islington@winkworth.co.uk](mailto:islington@winkworth.co.uk)

**Winkworth**

[winkworth.co.uk](http://winkworth.co.uk)

See things differently



## DESCRIPTION:

This charming one bedroom positioned on the second floor is set within a quiet, gated mews in Islington. Spanning 630sqft, the property is flooded with natural light and offers a wonderfully generous lounge bathed in light with plenty of dining space. The kitchen is recessed to the rear of the living space giving you a great entertaining space. The bedroom is located to the rear of the property and includes inbuilt wardrobes. The property also benefits from having a share of freehold and is being offered to the market on a chain-free basis.

Clare Lane is set just off Essex Road, which offers an array of local amenities including supermarkets, eateries and bars including the De Beauvoir Deli, Salut! and The De Beauvoir Arms all within easy reach. The boutique shops and restaurants of Upper Street are close by, whilst some fantastic transport links are also available. Highbury and Islington offers the closest underground service on the Victoria line and overground services to Moorgate. The East London line is serviced from Canonbury station whilst Angel station offers the Northern line. Many bus routes can be found on Essex Road for access to Angel or on Southgate Road for effortless transport to Central London, Shoreditch, Hoxton and the City.

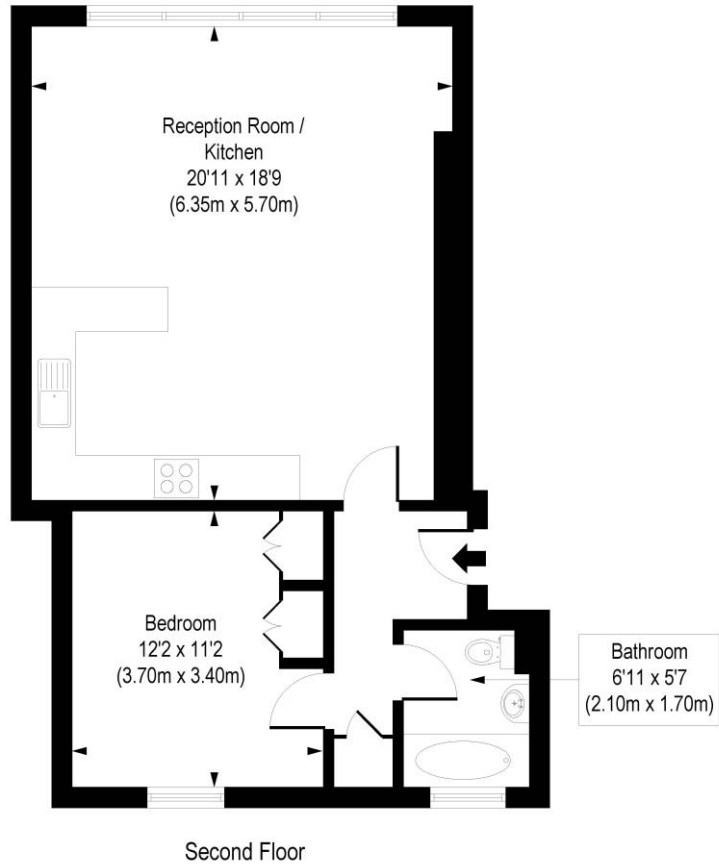
**Winkworth**



**Winkworth**

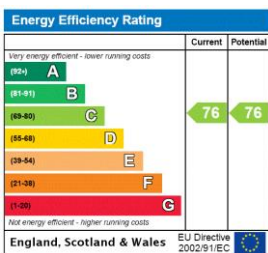
# Clare Lane, N1

Approx. Gross Internal Floor Area 630 sq. ft / 58.53 sq. m



COMPLIANT WITH RICS CODE OF MEASURING PRACTICE. Floorplan is for illustrative purposes only and is not to scale. Every attempt has been made to ensure the accuracy of the floorplan shown, however all measurements, fixtures, fittings and data shown are an approximate interpretation for illustrative purposes only. Liability for errors, omissions or mis-statement through negligence or otherwise is hereby excluded.

This floorplan is for illustration purposes only and is not to scale. The position and size of doors, windows, appliances and other features are approximate.



Islington | 0207 354 2480 | islington@winkworth.co.uk



winkworth.co.uk

See things differently

Winkworth wishes to inform prospective buyers and tenants that these particulars are a guide and act as information only. All our details are given in good faith and believed to be correct at the time of printing but they don't form part of an offer or contract. No Winkworth employee has authority to make or give any representation or warranty in relation to this property. All fixtures and fittings, whether fitted or not are deemed removable by the vendor unless stated otherwise and room sizes are measured between internal wall surfaces, including fumishings.