



**BENNETT PARK, BLACKHEATH, LONDON, SE3 9RB**  
**GUIDE PRICE £800,000-£835,000 LEASEHOLD**

**AN IMPRESSIVE AND BRAND NEW, TWO DOUBLE BEDROOM, TWO BATHROOM CONTEMPORARY DESIGN PENTHOUSE APARTMENT WITH TWO OUTSTANDING PRIVATE TERRACES AND STUNNING VIEWS, LOCATED IN THE HEART OF BLACKHEATH VILLAGE AND JUST MOMENTS FROM BLACKHEATH STATION AND 'VILLAGE LIFE' INCLUDING 27 EXCELLENT RESTAURANTS, BARS, ARTISAN CAFÉS AND PUBS.**

**Blackheath | 0208 8520999 | [blackheath@winkworth.co.uk](mailto:blackheath@winkworth.co.uk)**

**Winkworth**

*winkworth.co.uk*

See things differently



## DESCRIPTION:

Found on the top (third) floor, the accommodation comprises; a superb 30ft open plan reception room with beautiful modern kitchen with quartz worktops, island, integrated Samsung appliances and full width south facing glazed doors leading to a large private terrace to the rear. There are two well-proportioned double bedrooms, one with modern ensuite shower room, a second modern bathroom and utility and storage cupboards. Both bedrooms benefit from direct access onto a huge wrap around terrace with views towards Blackheath Village and the heath. Features include wood flooring, double glazed windows, gas central heating and water with Megaflo system and underfloor heating to the bathrooms. The property further benefits from bike and bin storage to the front with a green sedum roof.

This is fantastic apartment in an incredible location and your earliest viewing is essential. Virtual and video tours can be seen at [Winkworth.co.uk](http://Winkworth.co.uk)

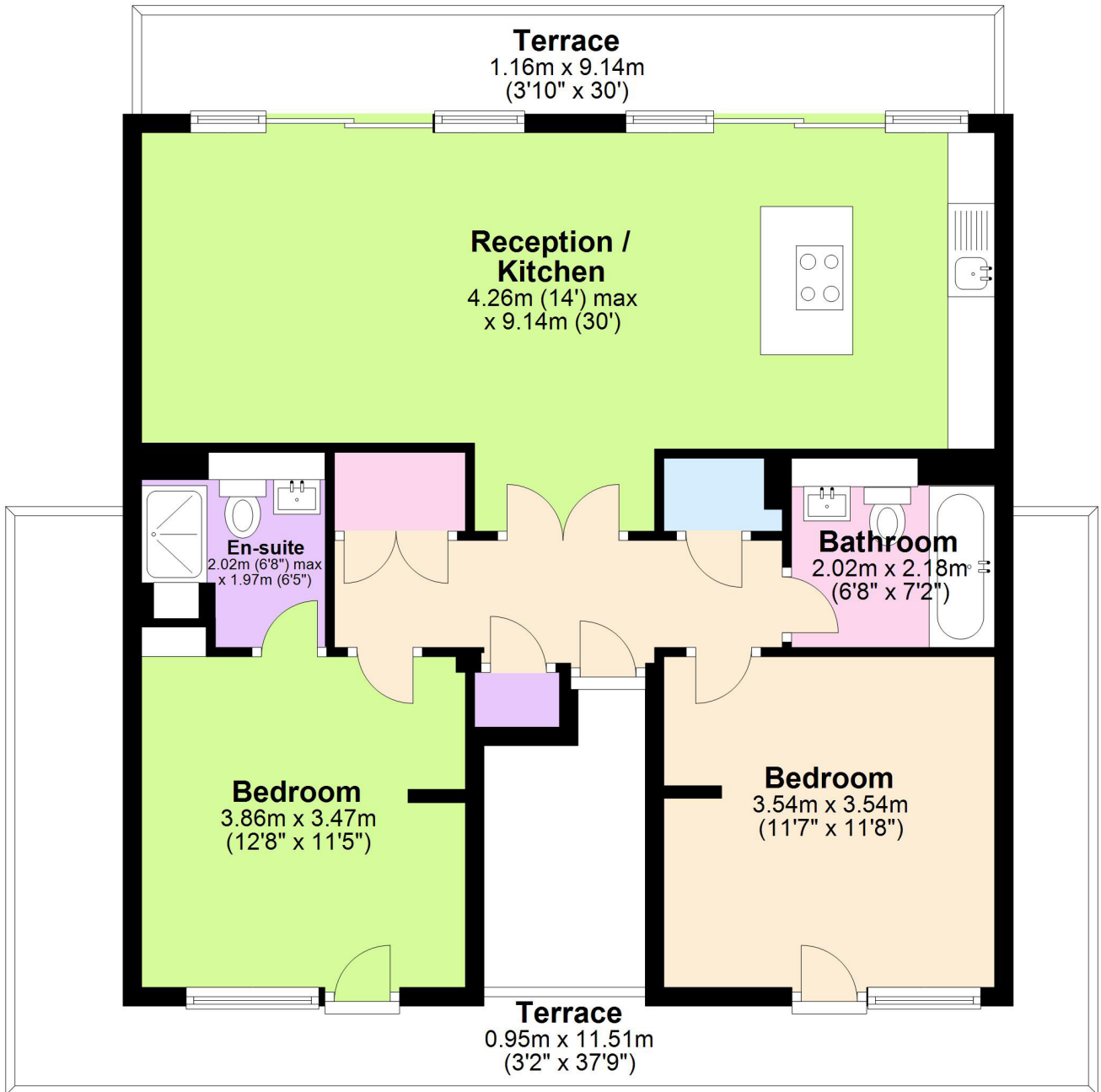
Bennett Park is a sought after address located in the heart of Blackheath Village with its array of boutique shops, farmers market, restaurants, bars and station. The heath is on your doorstep and the fabulous Royal Greenwich Park is just 900 metres away with Greenwich town centre beyond. Greenwich maintains a quaint rural village feel and is steeped in history with the old Royal Naval hospital, the Royal Observatory, the National Maritime Museum, and the spectacularly restored Cutty Sark ' the last of the great tea clippers. Greenwich's covered market is one of London's best and attracts people from all over the capital. There are fantastic transport links with Blackheath Station giving access to London Bridge, Charing Cross and Victoria amongst others with access to the, DLR (0.95 miles Lewisham) bus, riverboat, foot tunnel and cable car all within the area. The area is minutes from Canary Wharf, the City and central London; Just one of the reasons why it's increasingly popular with young professionals and commuters. The nearby O2 adds to the area's appeal, offering entertainment and leisure options for residents and visitors alike.

Close by are several highly sought-after Independent Schools including; Blackheath Preparatory School, The Pointer School, Heath House Preparatory School, Blackheath High Junior School, Blackheath High Seniors School, Colfes (1.5 miles) and Eltham College (2.5 miles) as are the Ofsted "outstanding" John Ball and St Margarets primary schools.





# Third Floor



Total area: approx. 76.9 sq. metres (827.2 sq. feet)

This floorplan is for illustration purposes only and is not to scale. The position and size of doors, windows, appliances and other features are approximate. Any lease and service charge details have been provided by the vendor. Any interest party should have these checked by a solicitor as part of the purchase process.

Blackheath | 0208 8520999 | blackheath@winkworth.co.uk

**Winkworth**

*winkworth.co.uk*

See things differently

Winkworth wishes to inform prospective buyers and tenants that these particulars are a guide and act as information only. All our details are given in good faith and believed to be correct at the time of printing but they don't form part of an offer or contract. No Winkworth employee has authority to make or give any representation or warranty in relation to this property. All fixtures and fittings, whether fitted or not are deemed removable by the vendor unless stated otherwise and room sizes are measured between internal wall surfaces, including furnishings.