



WHISKERS COTTAGE WICKHAM NEWBURY BERKSHIRE RG20 8HD

Winkworth



WHISKERS COTTAGE

WICKHAM NEWBURY RG20 8HD

A spacious two bedroom detached bungalow in the beautiful village of Wickham.

Equidistant to both Newbury and Hungerford, this fantastic project opportunity is in need of modernisation throughout but offers both great space and location for someone to come and make it their own!

As you enter the front door you are greeted by the entrance hallway which leads through to the generously sized living/dining room. From which you can walk straight through to the bright and airy conservatory.

As you carry on walking through you enter the kitchen that comes equipped with dishwasher, washing machine and electric cooker.

This property benefits from two double bedrooms with an en-suite to the master. To the rear of the property is a large garden that has side access through to the front drive which leaves you with ample parking for 2 cars.

NO ONWARD CHAIN

EPC F



AT A GLANCE

- 2 bed detached bungalow
- Room to extend in loft
- 1 bathroom
- 1 en-suite
- Lounge/dining room
- Conservatory
- Parking
- Garden

UTILITIES

EPC F

Oil central heating

Electricity

Mains water & drainage

DIRECTIONS

For Sat Nav RG20 8HD

What3words

[///hardback.reflect.oiled](https://www.what3words.com////hardback.reflect.oiled)

SITUATION

The property is situated in the village of Wickham which has a very good local pub. The village is close to both Newbury and Hungerford. Both towns have a good range of shopping and facilities and are on the mainline to London Paddington.

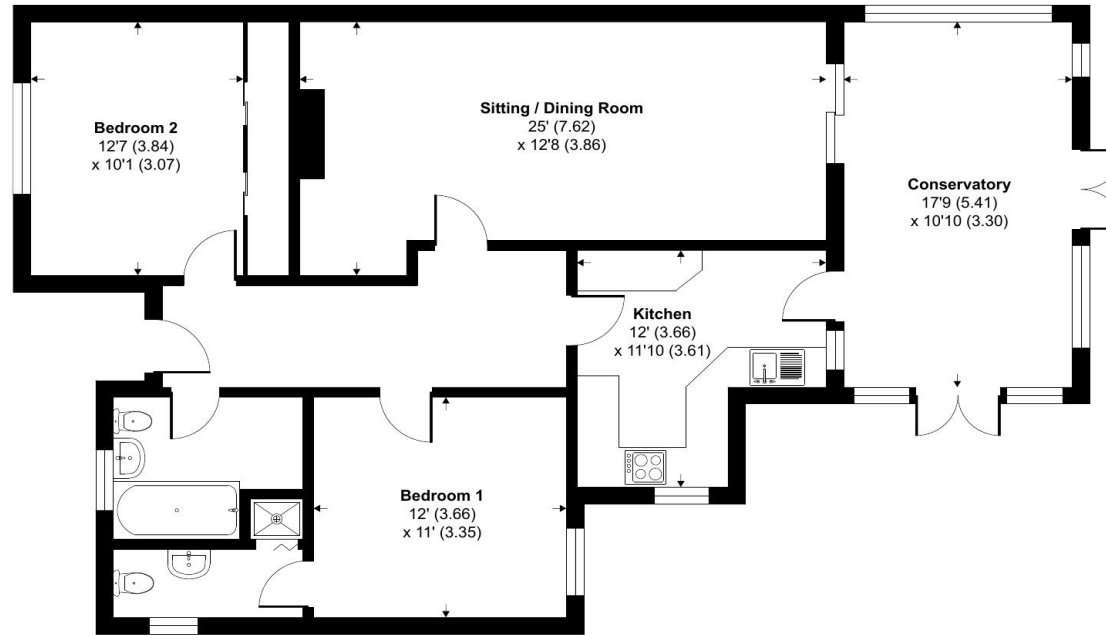




Whiskers Cottage, Wickham, Newbury, RG20

Approximate Area = 1151 sq ft / 106.9 sq m

For identification only - Not to scale



GROUND FLOOR



Floor plan produced in accordance with RICS Property Measurement Standards incorporating International Property Measurement Standards (IPMS2 Residential). © nichecom 2022. Produced for Winkworth. REF: 1020511

Winkworth

Newbury Office

43 Northbrook Street, Newbury, Berkshire RG14 1DT

01635 552552 | newbury@winkworth.co.uk

winkworth.co.uk/newbury



See things differently.