



FELLOWS COURT, WEYMOUTH TERRACE, LONDON, E2
£550,000 LEASEHOLD

A THREE BEDROOM SPLIT LEVEL MAISONETTE
WITH A PRIVATE REAR GARDEN JUST A
MOMENTS WALK TO HOXTON STATION.

Hackney | 020 8986 4216 | hackney@winkworth.co.uk

Winkworth

winkworth.co.uk

See things differently



DESCRIPTION:

A larger than average three-bedroom apartment, brilliantly located just a stone's throw away from Columbia Road Flower Market and the ever-vibrant Shoreditch High Street.

This homely split-level apartment spans an internal size of 900 sq. ft. It offers three large sized bedrooms, and a separate kitchen & reception room. The property is set back from the main road, and offers dual aspect windows; both sides of the property overlook greenery. Outside, you have sole access to both a private front garden and South East facing rear garden.

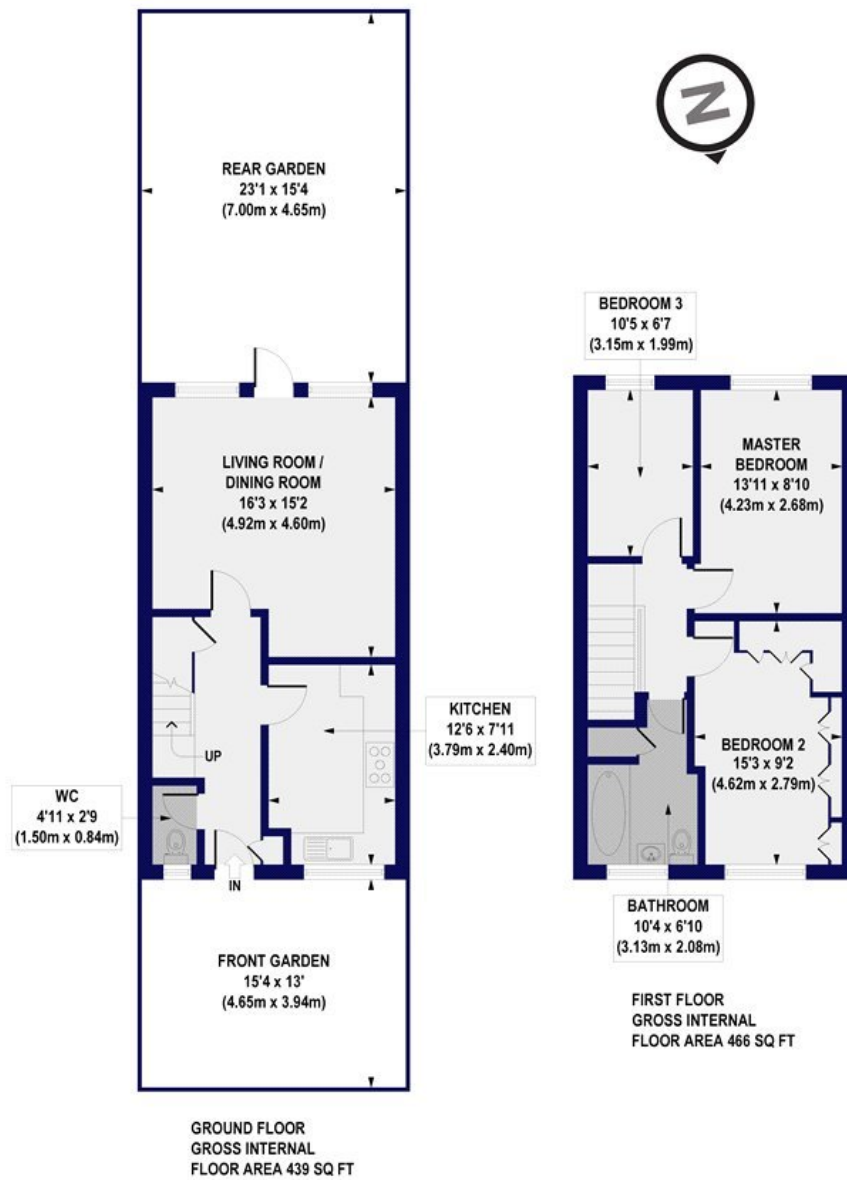
This location is excellent as it is situated close to Hoxton Overground Station, Kingsland Road and Shoreditch high street. A popular area for boutique shops, eateries, markets, galleries and of course, night life.

Winkworth



Winkworth

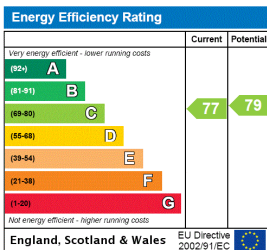
Fellows Court, Weymouth Terrace, E2
 Approx. Gross Internal Floor Area 905 sq. ft / 84.08 sq. m



All measurements of walls, doors, windows, fittings and appliances, including their size and location, are shown as standard sizes and do not constitute any warranty or representation by the seller, their agent or CP Creative. Any intending purchaser must satisfy himself by inspection or otherwise as to the correctness of the information contained in these plans. This plan is for illustrative purposes only and should be used as such by any prospective purchasers.

Winkworth

This floorplan is for illustration purposes only and is not to scale. The position and size of doors, windows, appliances and other features are approximate.



Hackney | 020 8986 4216 | hackney@winkworth.co.uk



winkworth.co.uk

See things differently

Winkworth wishes to inform prospective buyers and tenants that these particulars are a guide and act as information only. All our details are given in good faith and believed to be correct at the time of printing but they don't form part of an offer or contract. No Winkworth employee has authority to make or give any representation or warranty in relation to this property. All fixtures and fittings, whether fitted or not are deemed removable by the vendor unless stated otherwise and room sizes are measured between internal wall surfaces, including furnishings.