



TENNISON AVENUE, HERTFORDSHIRE, WD6
£599,950 FREEHOLD

A WELL PRESENTED TWO BEDROOM DETACHED BUNGALOW WITH SOUTHERLY REAR GARDEN IN SOUTH BOREHAMWOOD

Borehamwood | 020 8953 8899 | borehamwood@winkworth.co.uk



Winkworth

DESCRIPTION:

Situated on the "South" side of Borehamwood in a sought after turning just off Furzehill road and within easy access of Borehamwood High Street is this well presented two bedroom Detached bungalow.

Having been in the same ownership for the last twenty years the property has been meticulously maintained both internally and externally and offers scope to extend subject to the usual planning consents.

AT A GLANCE

- 2 Bedrooms
- Southerly Rear Garden
- 1094 Square Feet
- Off Street Parking
- South Borehamwood
- Gas Central Heating
- Double Glazed
- Double Reception
- Kitchen/Dining Room



Winkworth



Winkworth



Winkworth



Winkworth



Winkworth

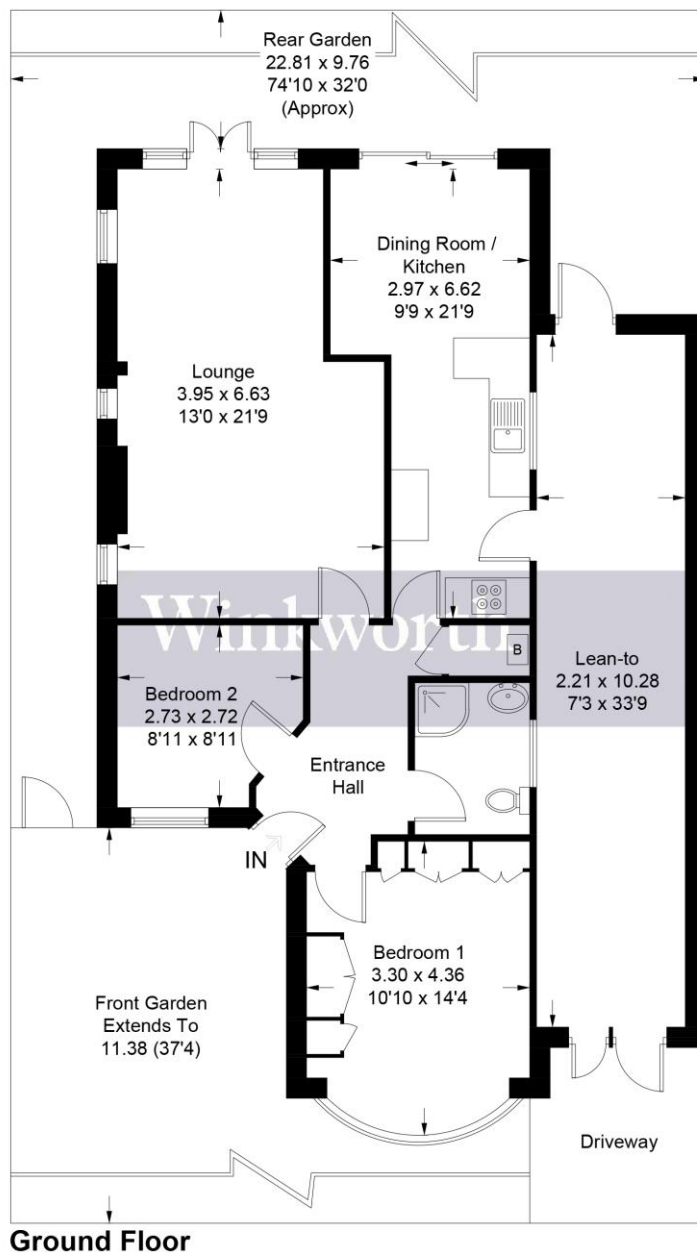


Winkworth



Winkworth

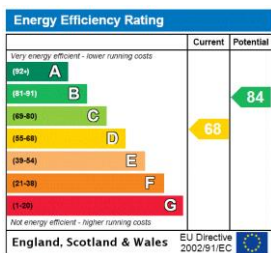
Approximate Gross Internal Area = 97.5 sq m / 1049 sq ft



Ground Floor

Illustration for identification purposes only, measurements are approximate, not to scale. Winkworth © 2024 (ID1056711)

This floorplan is for illustration purposes only and is not to scale. The position and size of doors, windows, appliances and other features are approximate.



Tenure: Freehold

Term: 0 year and 0 months

Service Charge: £0 per annum

Ground Rent: £ 0 Annually (subject to increase)

Council Tax Band:

Where no figures are shown, we have been unable to ascertain the information. All figures that are shown were correct at the time of printing.