



Stowe Road, Shepherd's Bush, W12

£450,000 Share of Freehold

A one bedroom flat with private garden on the lower ground floor of an end of terrace Victorian house, with scope to extend (subject to the usual necessary consents).

Reception Room | Kitchen | Bedroom | Bathroom | Garden | 502 Sq Ft / 47 Sq M | Council Tax Band D | EPC Rating Band D

Winkworth



LOCATION

Stowe Road runs between Coningham Road and Goldhawk Road, ideal for the numerous amenities on offer in Shepherds Bush, as well as those in Brackenbury Village. The nearest Underground stations are Goldhawk Road, Shepherds Bush Market and Shepherds Bush, where both Central Line and London Overground services are on offer. The various amenities of Westfield London are also close to hand.

DESCRIPTION

The property is well presented throughout, but offers the ingoing purchaser the opportunity to extend, subject to the usual necessary consents being obtained. Accommodation comprises entrance hall, reception room, bedroom, bathroom, kitchen and a good size private rear garden.

nb. Planning permission has been granted for the extension https://public-access.lbhf.gov.uk/online-applications/files/195443BF84384CCAEDF9C9174B9DBDEC/pdf/2021_00406_FUL-A089-PA2-A2-210-PP-PLAN-LOWER_GROUND-2448004.pdf

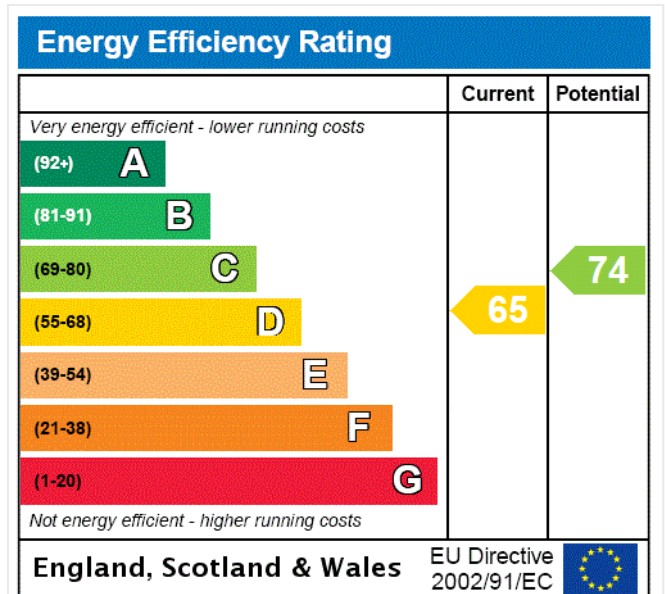


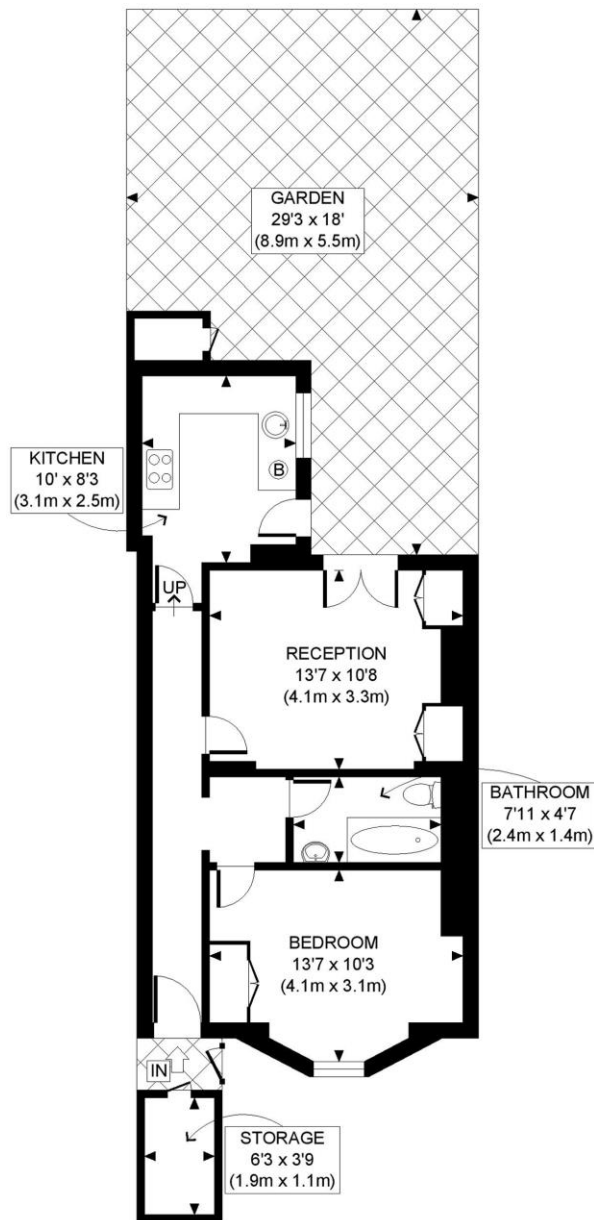


LOCAL AUTHORITY
Hammersmith & Fulham

TENURE
Share of Freehold.

PRICE: £450,000 Share of Freehold





LOWER GROUND FLOOR
GROSS INTERNAL
FLOOR AREA 502 SQ FT

APPROX. GROSS INTERNAL FLOOR AREA: 502 SQ FT/ 47 SQM

PROPERTY PHOTO PLANS.CO.UK
ONE STOP SHOP FOR PROPERTY MARKETING

This plan is for illustrative purposes only and should be used as such by any prospective client. Whilst every attempt has been made to ensure the accuracy of the Floor Plan contained here, measurements of the doors, windows, rooms and any other items are approximate and no responsibility is taken for any errors, omissions, or misstatement. The services, systems and appliances shown have not been tested and no guarantee as to the operability or efficiency can be given.

The displayed square footage is taken from the floor plans with measurements created using the Royal Institute of Chartered Surveyors' Code of Practice for Measuring. These measurements are approximate and included for illustrative purposes only. Winkworth does not make any representation as to the accuracy of these measurements and you should seek to verify them for yourself. Winkworth accept no liability for any loss you may suffer if you rely on these measurements.

Shepherds Bush | 020 8735 3266 | shepherdsbush@winkworth.co.uk

Winkworth

for every step...

Under the Property Misdescriptions Act 1991, these Particulars are a guide and act as information only. All details are given in good faith and are believed to be correct at time of printing. Winkworth give no representation as to their accuracy and potential purchasers or tenants must satisfy themselves by inspection or otherwise as to their correctness. No employee of Winkworth has authority to make or give any representation or warranty in relation to this property.