



22 Fleur-De-Lis, Duttons Road, Romsey, Hampshire, SO51 8LH





DELIGHTFUL APARTMENT IN CENTRAL ROMSEY

This charming first floor apartment, with lift, is a short stroll from the beautiful market town of Romsey. The town centre offers extensive amenities, including shops, restaurants, cafes, public houses and two large national supermarkets. Local attractions include the historic Abbey, Broadlands House and the famous river Test. Romsey offers a regular street market, which keeps the centre vibrant and busy. The remodelled town centre offers a Piazza, providing a lovely outdoor space for meeting friends and family for coffee. There is easy access to the M27 and M3 motorways, serving the major centres of Southampton, Winchester and Bournemouth. In addition, there is an excellent local bus service and a train station linking with the mainline services to London at Southampton. The New Forest National Park is within 6 miles of Romsey.

This beautifully presented one bedroom apartment is in this sought after development of Fleur-De-Lis in the heart of Romsey Town Centre. The accommodation comprises a large entrance hallway with a useful fitted cupboard. The well-proportioned sitting room provides access to the private balcony. The kitchen is one of the more generous in size on this development and is fitted with a wide range of modern eye and base level units and integral appliances. The bedroom benefits from two sets of built in wardrobes. The contemporary bathroom features a large walk-in shower.

Amenities available at Fleur-De-Lis, include an elegantly furnished owners lounge, a communal landscaped garden, 24-hour care line and a fully furnished guest suite for friends and family to stay overnight.

- All Mains Utilities
- No Onward Chain
- Superfast Broadband Available



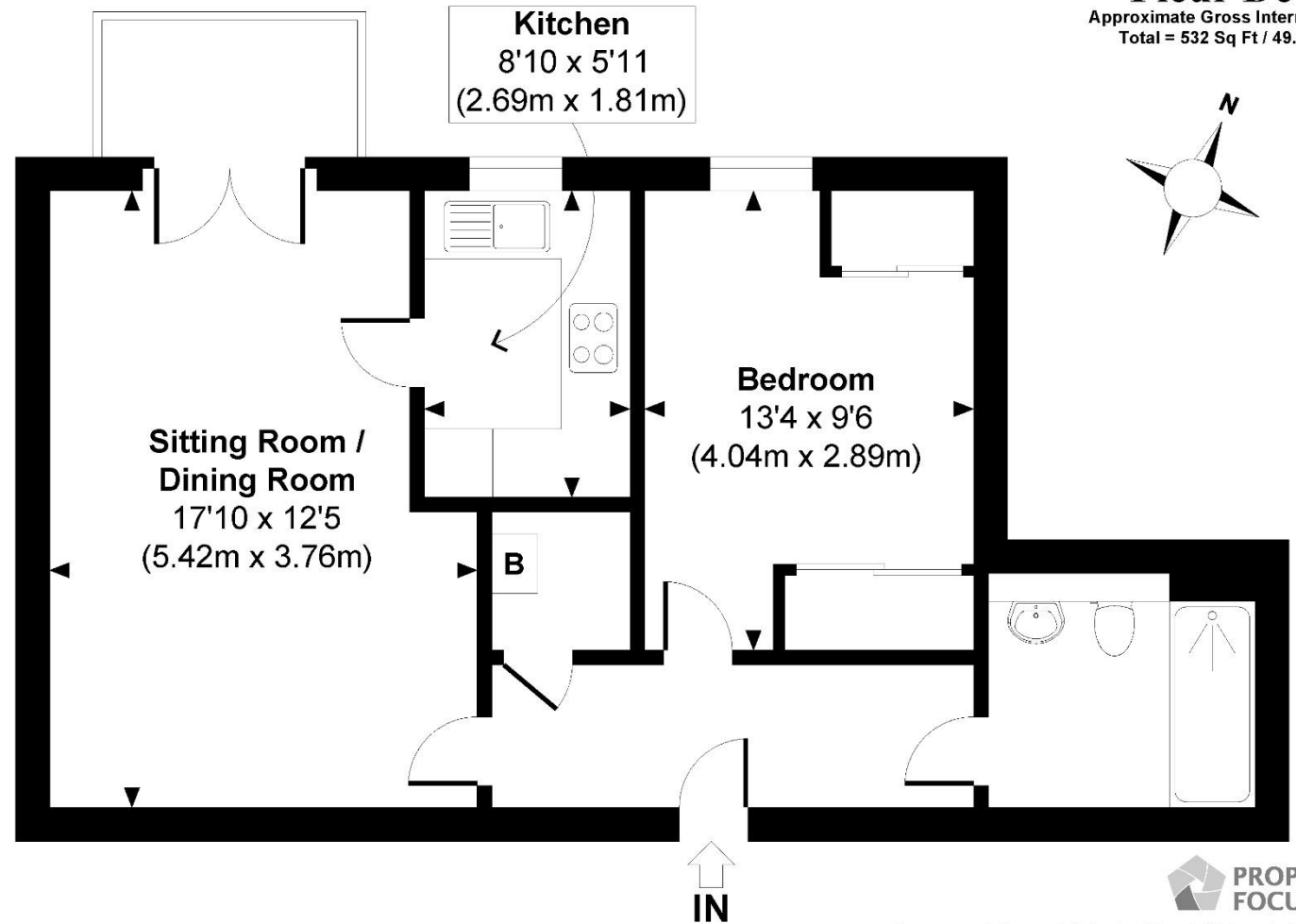
Winkworth

Address: 22 Fleur-De-Lis, Duttons Road, Romsey, Hampshire SO51 8LH

Council Tax Band: B
EPC: B

Tenure: Leasehold
Ground Rent - £525 Per Annum
Service Charge - £1868 – Half Yearly
Lease Length – 117 Years

60 Years plus only



Fleur De Lis
Approximate Gross Internal Area
Total = 532 Sq Ft / 49.42 Sq M

winkworth.co.uk/romsey

Winkworth Romsey

18 Market Place, Romsey, Hampshire, SO51 8NA
01794 511911 | romsey@winkworth.co.uk

winkworth.co.uk/romsey

Winkworth Winchester

2 Black Swan Buildings, Southgate Street,
Winchester, Hampshire, SO23 9DT
01962 866777 | winchester@winkworth.co.uk

Winkworth Mayfair & Country House Department

11 Berkeley Street, Mayfair, London, W1J 8DS
020 7871 0589 | countryhouse@winkworth.co.uk

Winkworth

See things differently

© www.propertyfocus.co | Professional Property Photography & Floorplans
This plan is for illustrative purposes only and is not to scale. If specified, the Gross Internal Area (GIA), dimensions, North point orientation and the size and placement of features are approximate and should not be relied on as a statement of fact. No guarantee is given for the GIA and no responsibility is taken for any error, omission or misrepresentation.