



St Georges Square, SW1V

£3,500 PER MONTH

FURNISHED

AT A GLANCE

- 676 Sq Ft
- Large bedroom
- High Spec kitchen
- Ample storage
- Modern bathroom
- **BILLS INCLUDED IN RENT**

Winkworth

for every step...



Energy Efficiency Rating		Current	Potential
Very energy efficient - lower running costs			
(92+)	A		
(81-91)	B		
(69-80)	C		76
(55-68)	D		
(39-54)	E	47	
(21-38)	F		
(1-20)	G		
Not energy efficient - higher running costs			
England, Scotland & Wales		EU Directive 2002/91/EC	

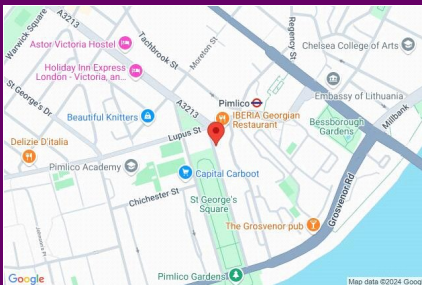
ST GEORGES SQUARE, SW1V

£3,500 PER MONTH
FURNISHED

A well presented flat in the highly sought after St George's Square. The flat spans over 676 sq ft and comprises of a well equipped, high spec kitchen, a large and light living room with period features and access out onto the private balcony and a super spacious bedroom that leads onto the large bathroom with shower over bath and ample storage space. The apartment further benefits from an extra storage room, high ceilings and is fully furnished. Available for a 6 month Let only.

St Georges Square is located well for Pimlico Underground (Victoria Line, 0.2 miles) which is only a short stroll away.

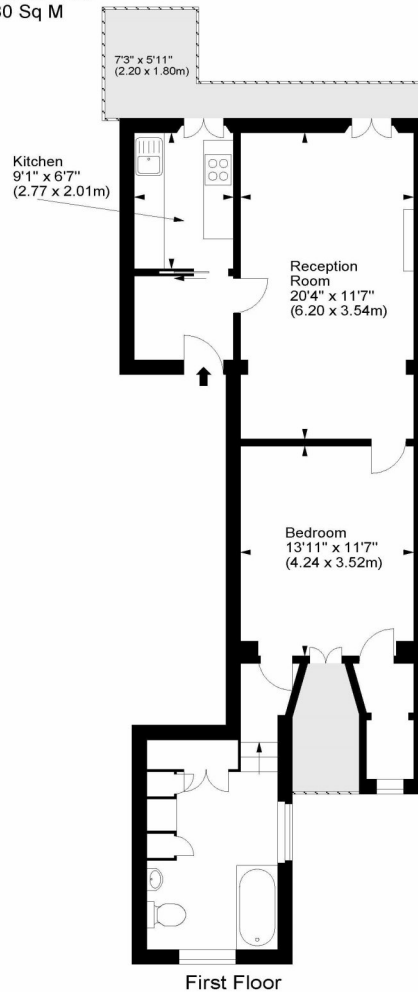
Victoria Station is also close by (0.7 miles) where there is a plethora of transport options, shops and restaurants.



winkworth wishes to inform prospective buyers and tenants that these particulars are a guide and act as information only. All our details are given in good faith and believed to be correct at the time of printing but they don't form part of an offer or contract. No Winkworth employee has authority to make or give any representation or warranty in relation to this property. All fixtures and fittings, whether fitted or not are deemed removable by the vendor unless stated otherwise and room sizes are measured between internal wall surfaces, including fire-chimneys.

St Georges Square, SW1

Approx. Gross Internal Area
676 Sq Ft - 62.80 Sq M



For illustration purposes only. Not to scale.
All measurements are taken and shown at floor level.
www.r3photography.co.uk © Photography / Floor Plans / Lease Plans / EPCs



Pimlico & Westminster | 020 7828 1786 |
pimlico@winkworth.co.uk

winkworth.co.uk/pimlico

Winkworth

for every step...