



MONMOUTH CLOSE, W4
£1,350 PER MONTH FURNISHED

ONE BEDROOM GROUND FLOOR FLAT IN A MODERN PURPOSE-BUILT BLOCK WITH OFF- STREET PARKING

Chiswick | 020 8994 7096 | chiswick@winkworth.co.uk

Winkworth

Tenant Fees Apply: Details of fees for tenant referencing, tenancy agreement admin fees and renewal fees are available on the Winkworth website and the link can be found with the displayed rent for the property. Tenants should ensure they are fully conversant with these upfront fees and other costs that are involved at the outset of the tenancy before making an offer to rent and your local Winkworth office will provide written details upon request.

winkworth.co.uk

See things differently



DESCRIPTION:

A well-presented ground floor flat in this modern development located in Chiswick Park. The property is neutrally decorated throughout and the accommodation comprises a spacious reception room with space for dining that leads through to a modern kitchen, double bedroom with built-in storage and a bathroom with shower over the bath. The property further benefits from off-street parking for one car.

Monmouth Close is ideally located close to the shops, bars and amenities on Chiswick High Road. Transport links at Chiswick Park Underground station (District line) are a short walk away.

ACCOMMODATION

Bedroom

Bathroom

Reception room

Kitchen

Off-street parking

Council Tax band: D

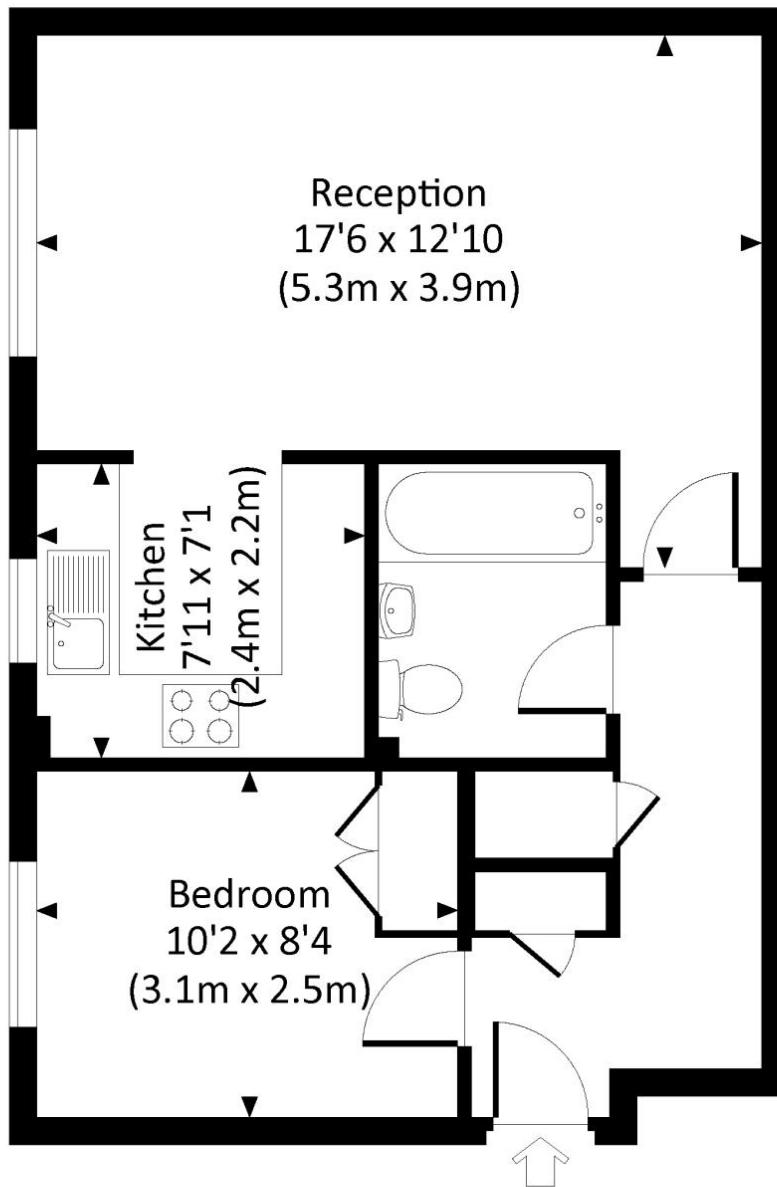
EPC: C

Fees Apply



MONMOUTH CLOSE, W4

Approx. gross internal area
452 Sq Ft. / 42.0 Sq M.

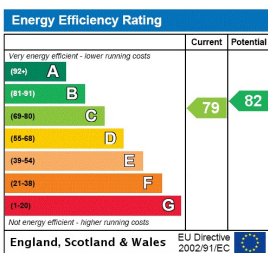


GROUND FLOOR



All measurements are approximate and for illustration purposes only as defined by the RICS Code of Measuring Practice © 2014
Dowling Jones Design www.dowlingjones.com 020 7610 9933

This floorplan is for illustration purposes only and is not to scale. The position and size of doors, windows, appliances and other features are approximate.



Chiswick | 020 8994 7096 | chiswick@winkworth.co.uk

Winkworth

winkworth.co.uk

See things differently

Winkworth wishes to inform prospective buyers and tenants that these particulars are a guide and act as information only. All our details are given in good faith and believed to be correct at the time of printing but they don't form part of an offer or contract. No Winkworth employee has authority to make or give any representation or warranty in relation to this property. All fixtures and fittings, whether fitted or not are deemed removable by the vendor unless stated otherwise and room sizes are measured between internal wall surfaces, including furnishings.