



THE MARLOWES, NW8 £3,250,000 FREEHOLD

Discreetly positioned within this popular residential development is this low built 4 bedroom house (1925 sq ft/ 178 sq m) that has been extensively renovated by the current owners. On the ground floor, there is a 17' kitchen/breakfast room with direct access to the south-facing garden and an additional family/living room. There is an additional formal reception room on the first floor. Other benefits include off-street parking for 2 cars.

The Marlowes is located behind St John's Wood Park and within 0.4 miles of St John's Wood underground stations and local shops. The American School (0,3 miles) and Regents Park (0.7 miles) are also close at hand.

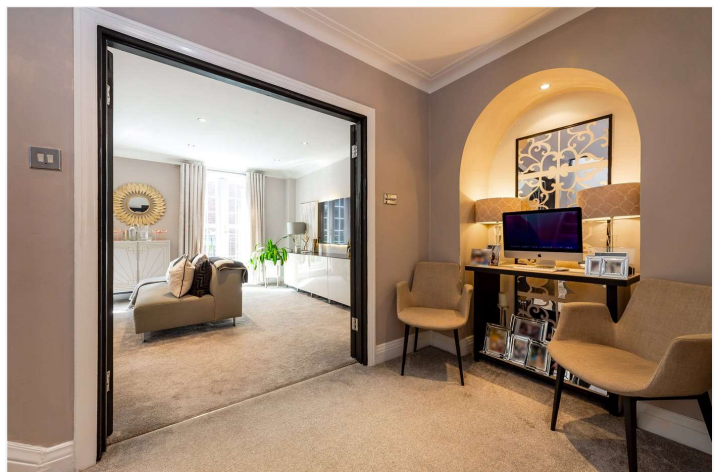
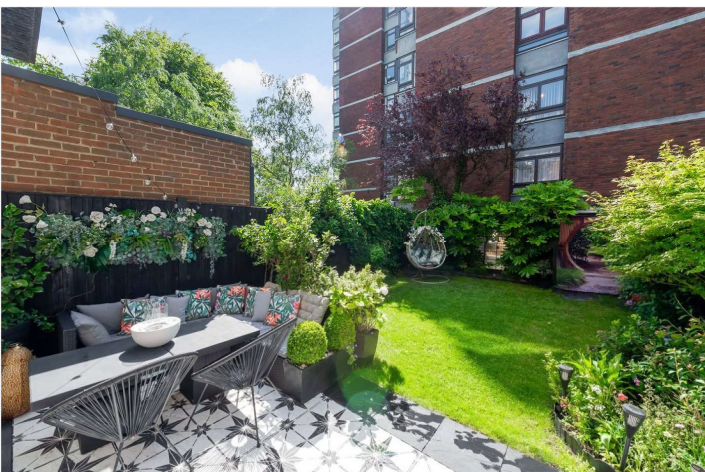
Principle Bedroom with Dressing Room and En-Suite | Three Bedrooms | Two Bathrooms | Guest WC | Two Reception Rooms | Kitchen/Dining Room | Private Garden | Off Street Parking for Two Cars | Freehold

View our virtual tour here: <https://youtu.be/oJm8xQAPfw>

Winkworth

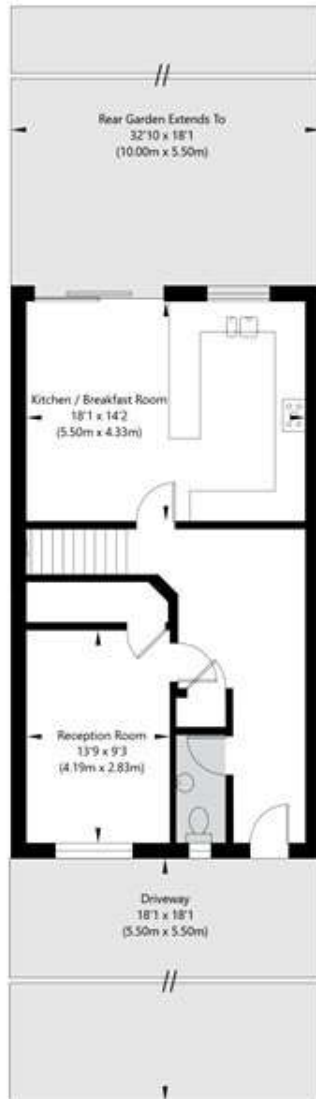
for every step...

[winkworth.co.uk/st-johns-wood](https://www.winkworth.co.uk/st-johns-wood)

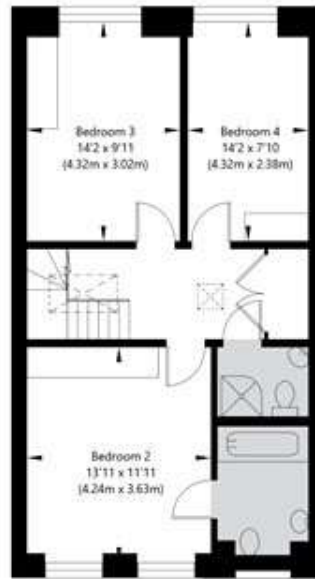




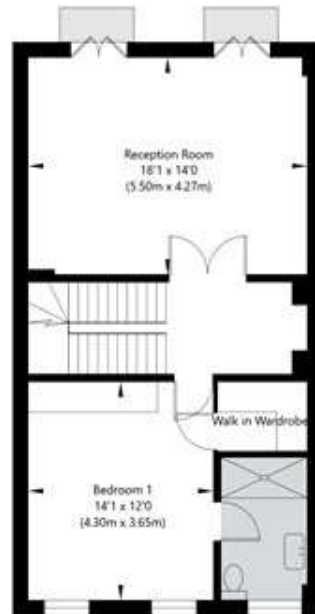
The Marlowes, London NW8 6NA



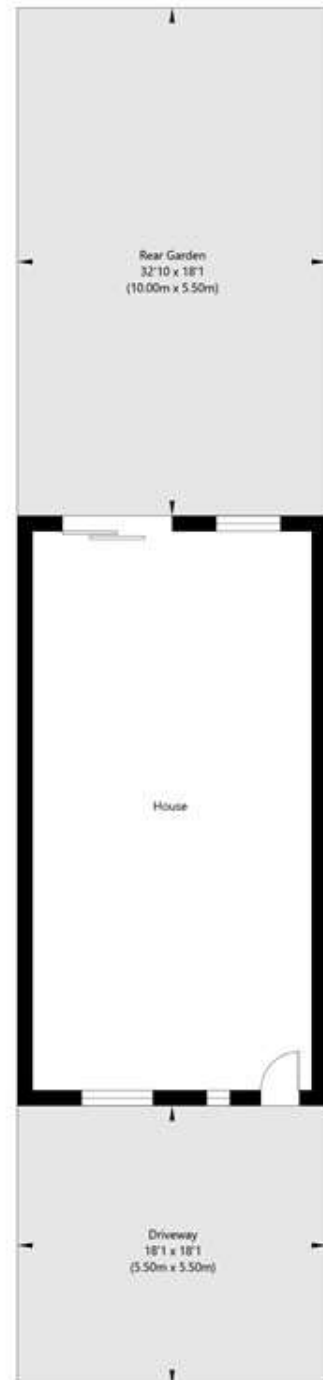
Ground Floor



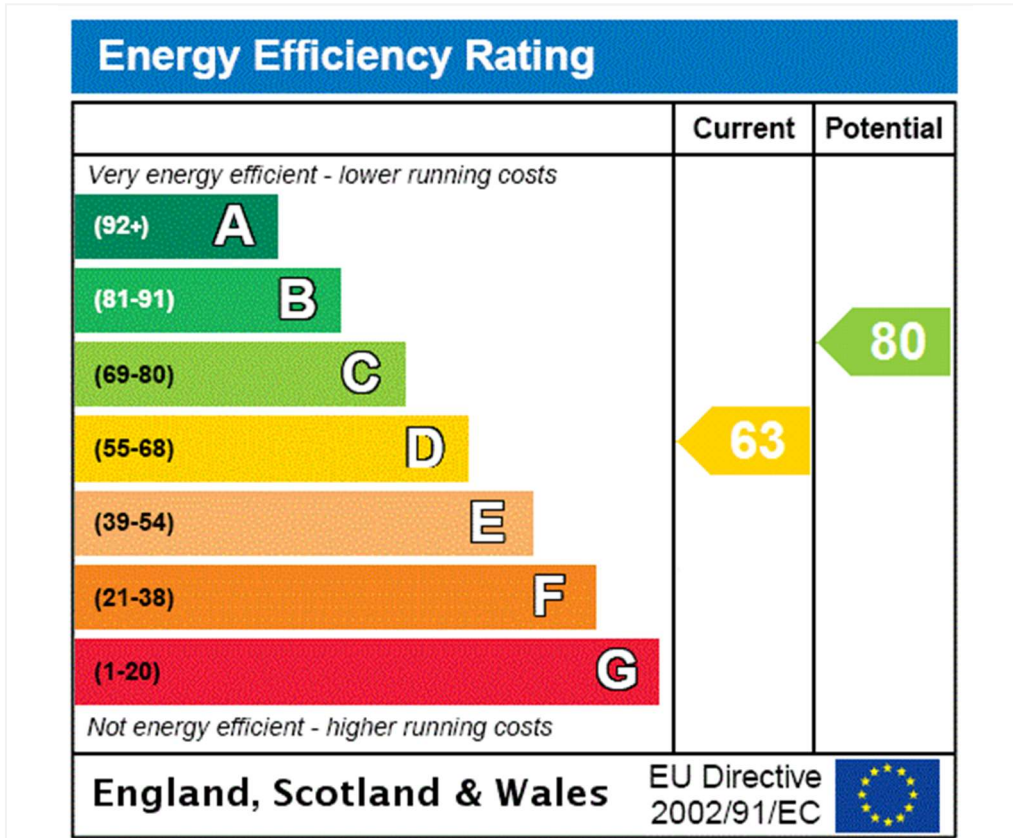
Second Floor



First Floor



APPROXIMATE GROSS INTERNAL FLOOR AREA 178 SQ M / 1925 SQ FT
THIS FLOOR PLAN IS FOR ILLUSTRATIVE PURPOSES ONLY AND
SHOULD BE USED FOR THIS PURPOSE BY PROSPECTIVE APPLICANTS AS ITS NOT TO SCALE.



Tenure: Freehold

Council Tax Band: H

Where no figures are shown, we have been unable to ascertain the information. All figures that are shown were correct at the time of printing.

Where no figures are shown, we have been unable to ascertain the information. All figures that are shown were correct at the time of printing. These particulars are not an offer or contract, nor part of one. You should not rely on statements by Winkworth in the particulars or by word of mouth or in writing "information" as being factually accurate about the property, its condition or its value. Winkworth does not have any authority to make any representations about the property, and accordingly any information given is entirely without responsibility on the part of the agents, seller(s) or lessor(s). These particulars are prepared on the basis of the information supplied by our client and are a rough guide for information only. The photographs show only certain parts of the property. We are not able to check all of the information and therefore are unable to guarantee accuracy. All interested parties are therefore advised to undertake all necessary inspections and checks that they deem appropriate. Where displayed, the square footage is taken from the floor plans, which are created by an independent supplier. These measurements are approximate and included for illustrative purposes only. The measurements may vary. Winkworth does not make any representation as to the accuracy of these measurements and you should seek to verify them for yourself. Winkworth accept no liability for any loss you may suffer if you rely on these measurements. All fixtures and fittings, whether fitted or not are deemed removable by the vendor unless stated. Any reference to alterations to, or use of, any part of the property does not mean that any necessary planning, building regulations or other consent has been obtained. Amenities and appliances have not been tested

St John's Wood | 103-104 St. Johns Wood Terrace, London, NW8 6PL | 020 7586 7001 |



for every step...

winkworth.co.uk/st-johns-wood

Winkworth wishes to inform prospective buyers and tenants that these particulars are a guide and act as information only. All our details are given in good faith and believed to be correct at the time of printing but they don't form part of an offer or contract. No Winkworth employee has authority to make or give any representation or warranty in relation to this property. All fixtures and fittings, whether fitted or not are deemed removable by the vendor unless stated otherwise and room sizes are measured between internal wall surfaces, including furnishings.