



WESLEY SQUARE, W11
£650,000 SHARE OF FREEHOLD

FANTASTIC DUPLEX APARTMENT IN THE
HEART OF NOTTING HILL, JUST MINUTES
AWAY FROM PORTOBELLO ROAD AND
MARKET

North Kensington | 020 7792 5000 | northkensington@winkworth.co.uk

Winkworth

for every step...

winkworth.co.uk



DESCRIPTION:

Situated in an exclusive private communal garden square, the flats surround the picturesque and well-maintained gardens. The internal space comprises a bespoke designed open plan kitchen/reception with modern fixtures and fittings, spacious master bedroom, a spacious bedroom on the upper floor that benefits from an abundance of natural light and modern family bathroom. Built in 1979, Wesley Square is a small development of 50 houses, maisonettes and flats, the owners of which jointly own the freehold. The involvement of everybody who wishes, in the management of the Square gives it a strong sense of community and leads to friendly and neighbourly relationships. Entered through a private front garden off the beautiful car-free garden square. Located off Lancaster Road, Wesley Square is well located to take advantage of all that Notting Hill has to offer. There are a wide variety of Shops, Bars and Restaurants, Portobello Road and Market, plus the increasingly popular Golborne Road. Nearest station is Ladbroke Grove - 5 mins walk.

AT A GLANCE

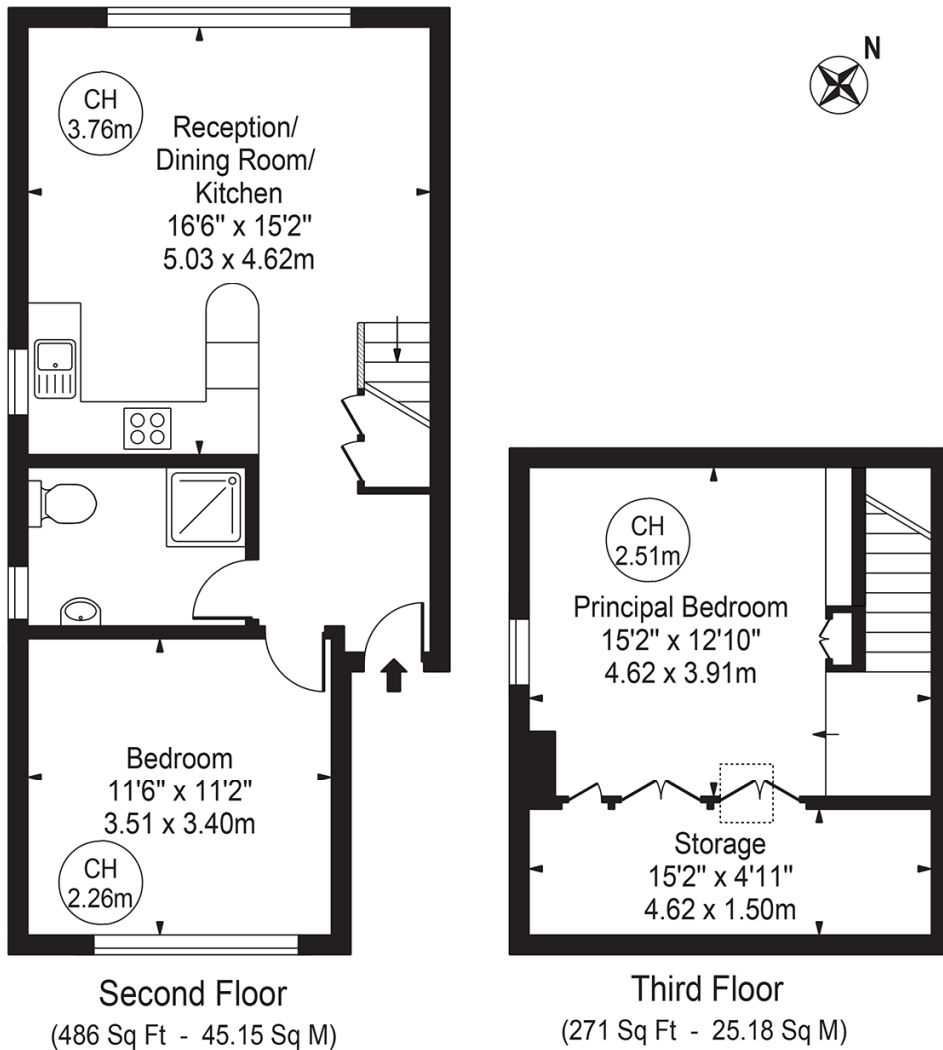
- Gorgeous Loft Style Flat
- Immaculate Condition
- Stunning Popular Garden Square
- Pitched Ceilings
- Two Large Double Bedrooms
- EPC Rating C
- Share of Freehold
- Service Charges £3,000 pa
- Ground Rent Peppercorn





Wesley Square

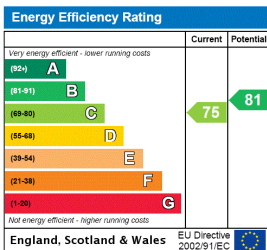
Approx. Gross Internal Area 757 Sq Ft - 70.33 Sq M



For Illustration Purposes Only - Not To Scale

This floor plan should be used as a general outline for guidance only and does not constitute in whole or in part an offer or contract. Any intending purchaser or lessee should satisfy themselves by inspection, searches, enquiries and full survey as to the correctness of each statement. Any areas, measurements or distances quoted are approximate and should not be used to value a property or be the basis of any sale or let. Copyright Morriarti Photography & Design LTD

This floorplan is for illustration purposes only and is not to scale. The position and size of doors, windows, appliances and other features are approximate.



North Kensington | 020 7792 5000 | northkensington@winkworth.co.uk



for every step...

winkworth.co.uk

Winkworth wishes to inform prospective buyers and tenants that these particulars are a guide and act as information only. All our details are given in good faith and believed to be correct at the time of printing but they don't form part of an offer or contract. No Winkworth employee has authority to make or give any representation or warranty in relation to this property. All fixtures and fittings, whether fitted or not are deemed removable by the vendor unless stated otherwise and room sizes are measured between internal wall surfaces, including furnishings.