



THE MANOR HOUSE, SONNING, READING, RG4 6UR
£1,695 PER MONTH UNFURNISHED

TWO BEDROOM TOP FLOOR APARTMENT IN THE THAMESIDE VILLAGE OF SONNING

Reading | 0118 4022 300 | reading@winkworth.co.uk

Winkworth

for every step...

winkworth.co.uk



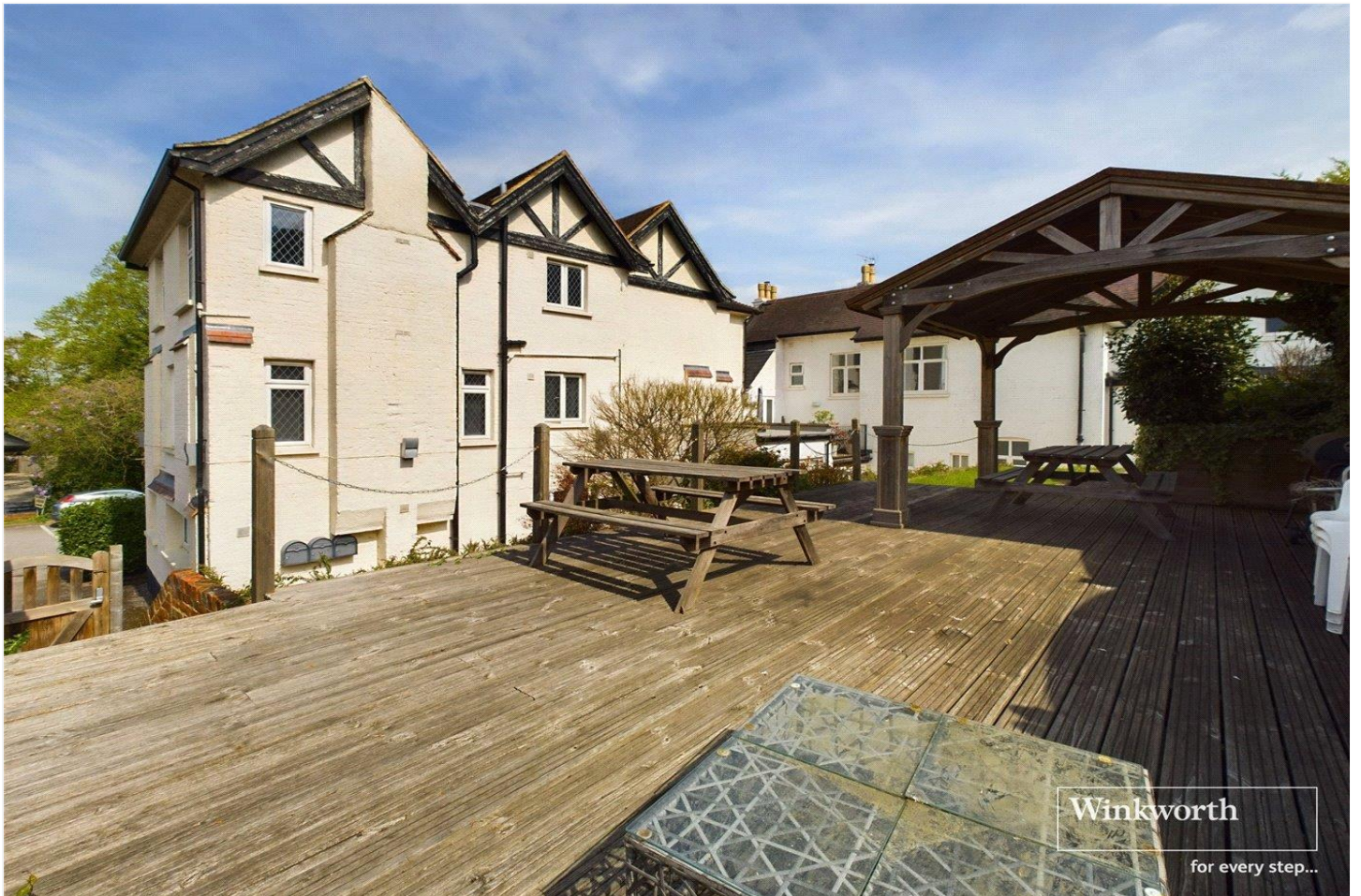
DESCRIPTION:

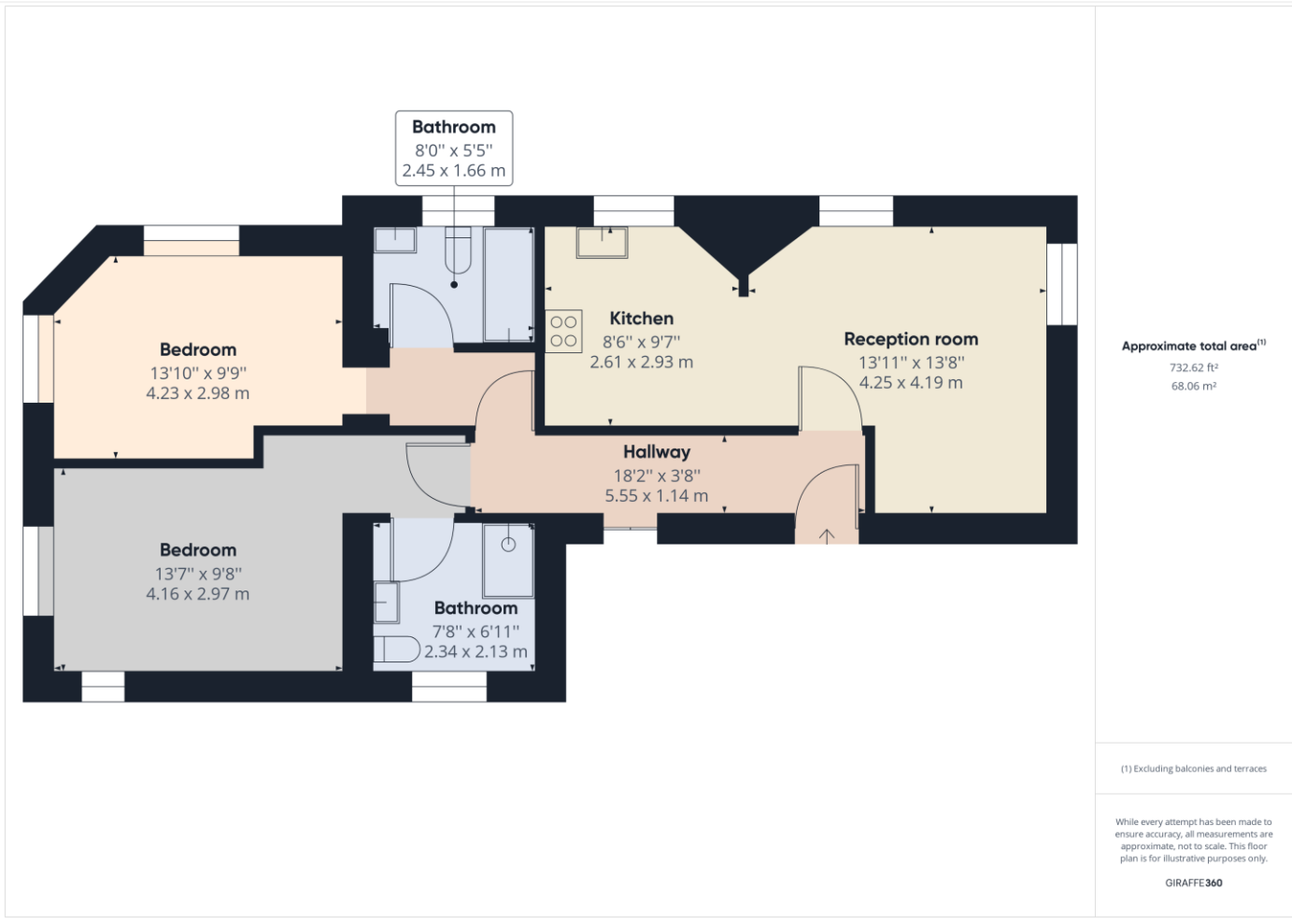
This two bedroom top floor apartment is situated in an idyllic Thames side setting. Whilst offering the tranquillity of a village location this property offers excellent transport links being just over three miles from Central Reading and two miles from Twyford, both with their direct links to London via the Elizabeth Line (Crossrail) linking Reading with Canary Wharf and the City of London. This immaculately presented apartment is one of just three, in this exclusive development enjoying a quiet position in the heart of Sonning and views over the River Thames. The property is set on the second floor and benefits from a contemporary finish throughout with two double bedrooms, the master with an en ensuite and a further bathroom. There is an open plan reception room with dual aspect windows and a modern Poggenpohl kitchen with a range of integrated appliances. The apartment comes with a allocated parking space and has use of the communal garden. Available now. Unfurnished.

AT A GLANCE

- Two Bedroom Apartment
- Second floor (no lift)
- Views Over The River Thames
- Two Bathrooms
- Council tax band D
- Allocated parking space
- Available now
- Unfurnished







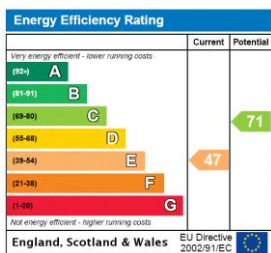
This floorplan is for illustration purposes only and is not to scale. The position and size of doors, windows, appliances and other features are approximate.

Deposit: £1,955.77

Holding Deposit: £391.15

Council Tax Band: D

Where no figures are shown, we have been unable to ascertain the information. All figures that are shown were correct at the time of printing.



Reading | 0118 4022 300 | reading@winkworth.co.uk



for every step...

winkworth.co.uk

Winkworth wishes to inform prospective buyers and tenants that these particulars are a guide and act as information only. All our details are given in good faith and believed to be correct at the time of printing but they don't form part of an offer or contract. No Winkworth employee has authority to make or give any representation or warranty in relation to this property. All fixtures and fittings, whether fitted or not are deemed removable by the vendor unless stated otherwise and room sizes are measured between internal wall surfaces, including furnishings.