



WINCHESTER AVENUE, LONDON, NW6
£539,950 SHARE OF FREEHOLD

**A BRIGHT AND AIRY TWO DOUBLE BEDROOM, SPLIT LEVEL
FLAT, LOCATED PERFECTLY FOR THE AMENITIES AND
TRANSPORT LINKS OF SALUSBURY ROAD, QUEENS PARK.**

Kensal Rise & Queens Park | 0208 960 4947 | kensalrise@winkworth.co.uk

Winkworth



LOCATION:

Winchester Avenue is a great location in Queens Park, providing easy access to the array of amenities along Salusbury Road and great transport links at either Queens Park (Bakerloo and London Overground), Brondesbury Park or even Kilburn Station and the Jubilee Line. If it's green spaces you crave then look no further than Queens Park itself which is at the end of the Road or even jump on the Overground at Brondesbury Park and it's three stops to Hampstead Heath.

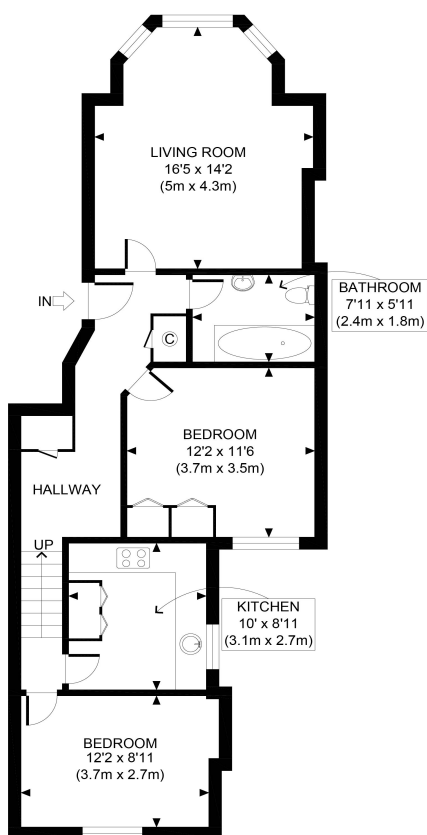


DESCRIPTION:

This is a spacious, bright and airy split level flat, located a stone's throw from Salisbury Road and a short walk to Queens Park itself. Comprising of a ground floor entrance, this leads you to a large front reception room with feature fireplace and sash bay window. The principle bedroom overlooks the gardens to the rear with floor to ceiling height window. This floods the room with natural light. Upstairs, you will find the kitchen and second double bedroom. The main family bathroom is a tiled three piece suite.

Overall, the flat can benefit from a new owner adding their own personal touch to.

Tenure: Share of Freehold.



This floorplan is for illustration purposes only and is not to scale. The position and size of doors, windows, appliances and other features are approximate.

FLOOR AREA 744 SQ FT

APPROX. GROSS INTERNAL FLOOR AREA 744 SQ FT / 69 SQM	winchester Av
Disclaimer: Floor plan measurements are approximate and are for illustrative purposes only. While we do not doubt the floor plan accuracy and completeness, you or your advisors should conduct a careful, independent investigation of the property in respect of monetary valuation	date 04/09/24
	photoplan

Kensal Rise & Queens Park | 0208 960 4947 | kensalrise@winkworth.co.uk

Winkworth

winkworth.co.uk

See things differently

winkworth wishes to inform prospective buyers and tenants that these particulars are a guide and act as information only. All our details are given in good faith and believed to be correct at the time of printing but they don't form part of an offer or contract. No Winkworth employee has authority to make or give any representation or warranty in relation to this property. All fixtures and fittings, whether fitted or not are deemed removable by the vendor unless stated otherwise and room sizes are measured between internal wall surfaces, including furnishings.