

**RUBY HOUSE, MYRDLE STREET, LONDON, E1**  
**£2,600 PER MONTH FURNISHED, PART FURNISHED**

**AN EXCEPTIONAL TWO BEDROOM APARTMENT  
WITH PRIVATE TERRACE LOCATED ON THE FIRST  
FLOOR OF A PERIOD CONVERSION.**

Shoreditch | 020 7749 7650 | [shoreditch@winkworth.co.uk](mailto:shoreditch@winkworth.co.uk)

**Winkworth**

Tenant Fees Apply: Details of fees for tenant referencing, tenancy agreement admin fees and renewal fees are available on the Winkworth website and the link can be found with the displayed rent for the property. Tenants should ensure they are fully conversant with these upfront fees and other costs that are involved at the outset of the tenancy before making an offer to rent and your local Winkworth office will provide written details upon request.

[winkworth.co.uk](http://winkworth.co.uk)

See things differently



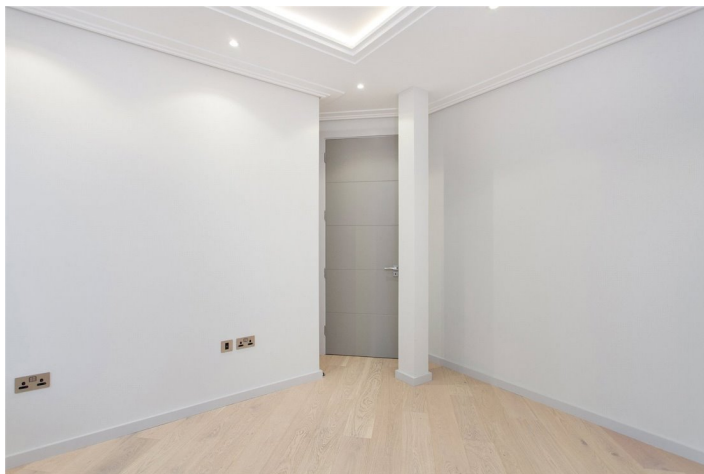
## DESCRIPTION:

An exceptional two bedroom apartment with private terrace located on the first floor of a period conversion. With an impeccable level of detail given to its finish, this property is ideal for professionals that wish to live in high-end surroundings and is conveniently located less than 5 minutes' walk from Aldgate East Tube Station with access to the District and Hammersmith & City Lines.

The property is comprised of two double bedrooms (one with ensuite shower room), recessed LED lighting, master bathroom, spacious reception room, open-plan fitted kitchen and a large private terrace. Must be viewed to appreciate the outstanding decor.

**Winkworth**

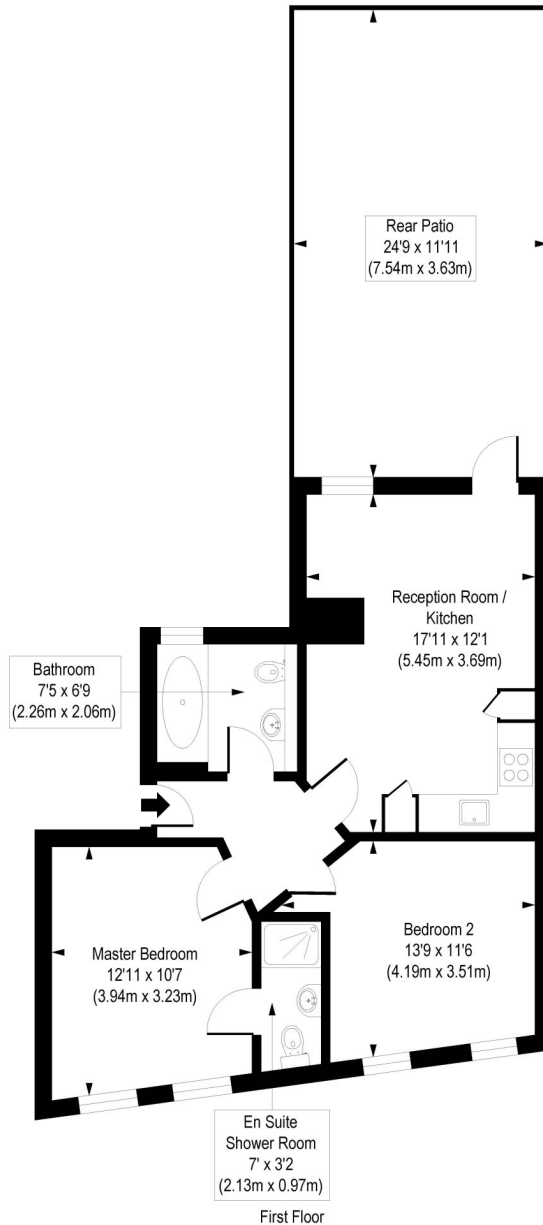
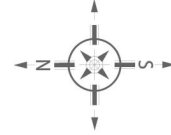




**Winkworth**

# Myrdle Street, E1

Approx. Gross Internal Floor Area 610 sq. ft / 56.70 sq. m



COMPLIANT WITH RICS CODE OF MEASURING PRACTICE. Floorplan is for illustrative purposes only and is not to scale. Every attempt has been made to ensure the accuracy of the floorplan shown, however all measurements, fixtures, fittings and data shown are an approximate interpretation for illustrative purposes only. Liability for errors, omissions or mis-statement through negligence or otherwise is hereby excluded.

This floorplan is for illustration purposes only and is not to scale. The position and size of doors, windows, appliances and other features are approximate.

Shoreditch | 020 7749 7650 | shoreditch@winkworth.co.uk

**Winkworth**

*winkworth.co.uk*

See things differently

Winkworth wishes to inform prospective buyers and tenants that these particulars are a guide and act as information only. All our details are given in good faith and believed to be correct at the time of printing but they don't form part of an offer or contract. No Winkworth employee has authority to make or give any representation or warranty in relation to this property. All fixtures and fittings, whether fitted or not are deemed removable by the vendor unless stated otherwise and room sizes are measured between internal wall surfaces, including furnishings.