



HODSON CLOSE, MIDDLESEX, HA2
£440,000 FREEHOLD

CALLING ALL BUYERS!

Tenure: Freehold
Council Tax Band: D
EPC Rating: D

Harrow | 020 8861 3933 | harrow@winkworth.co.uk



DESCRIPTION:

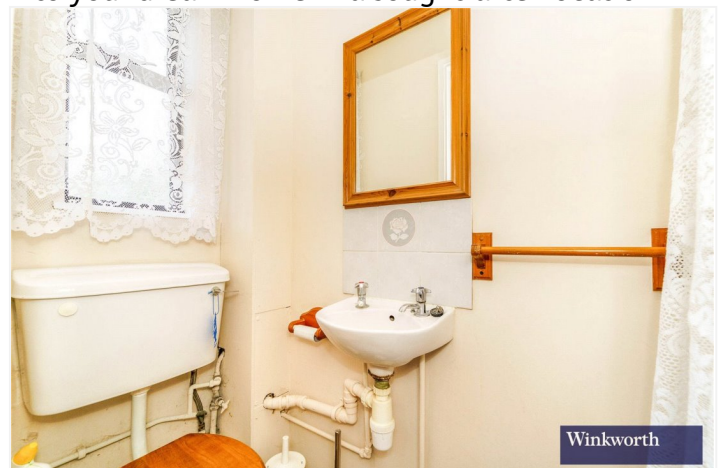
Winkworth Harrow are proud to present to the Sales Market, this gem of a family home.

This charming two bedroom terraced house boasts bright, light-filled interiors and neutral hues, displaying a sense of modernity and serenity. The well-proportioned rooms offer ample space for both relaxation and entertainment. The kitchen is thoughtfully designed, featuring modern appliances and plenty of storage options.

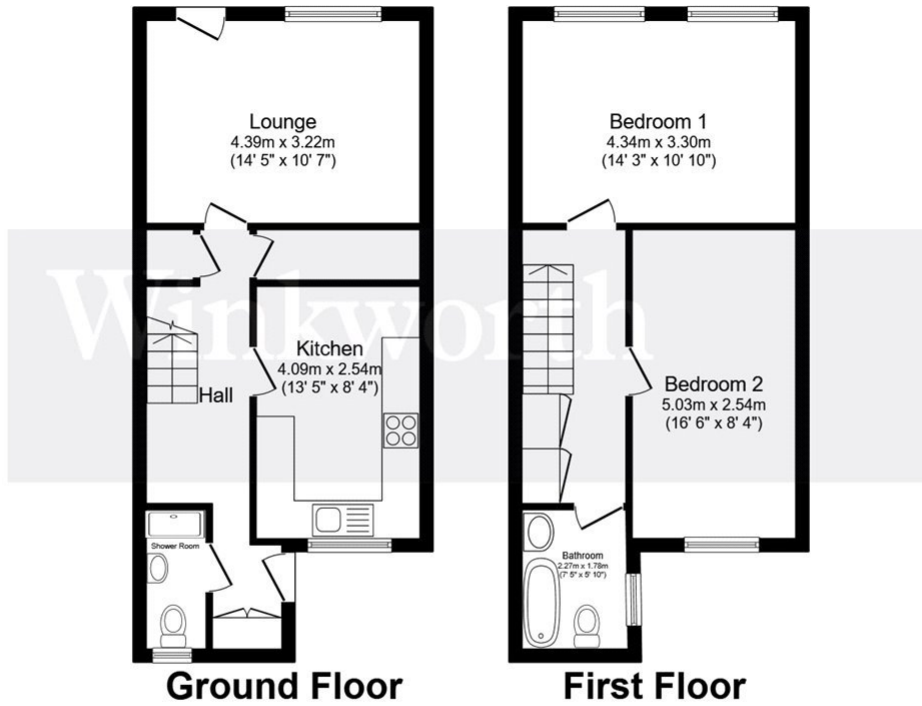
This well-appointed two bedroom home offers a bright airy ground floor with a kitchen and reception room which leads to a sun kissed private garden. Other notable features include a allocated parking for one car.

With its central location and proximity to local amenities, transportation links, and schools, this property is an ideal starter home.

Don't miss the chance to transform this property into your dream home in a sought-after location







Total floor area 78.0 m² (840 sq.ft.) approx

This floor plan is for illustrative purposes only. It is not drawn to scale. Any measurements, floor areas (including any total floor area), openings and orientation are approximate. No details are guaranteed, they cannot be relied upon for any purpose and they do not form part of any agreement. No liability is taken for any error, omission or misstatement. A party must rely upon its own inspection(s). Powered by www.focalagent.com

This floorplan is for illustration purposes only and is not to scale. The position and size of doors, windows, appliances and other features are approximate.

Energy Efficiency Rating		Current	Potential
Very energy efficient - lower running costs			
(92)	A		91
(81-91)	B		
(69-80)	C		
(55-68)	D	67	
(39-54)	E		
(21-38)	F		
(1-20)	G		
Not energy efficient - higher running costs			
England, Scotland & Wales		EU Directive 2002/91/EC	