



INVERNESS TERRACE, BAYSWATER, W2
£1,050,000 LEASEHOLD ABOUT 978 YEARS REMAINING

LOCATED IN W2 - WITH CLOSE PROXIMITY TO KENSINGTON GARDENS AND HYDE PARK. A GORGEOUS SHARE OF FREEHOLD, WEST FACING, WELL-PROPORTIONED AND STYLISH ONE BEDROOM APARTMENT, SITUATED ON THE FOURTH FLOOR (WITH LIFT), OF A STUNNING GRADE II PERIOD BUILDING. THIS BEAUTIFUL APARTMENT HAS AN ABUNDANCE OF NATURAL LIGHT, BESPOKE STORAGE, MARBLE FIREPLACE SURROUND AND BEEN THOUGHTFULLY MODERNISED TO AN EXACTING STANDARD.

Paddington & Bayswater | 020 7467 5770 | paddington@winkworth.co.uk

Winkworth

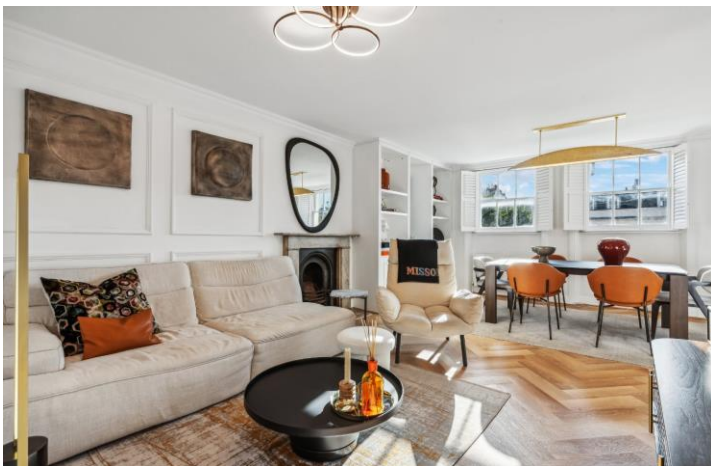
for every step...

winkworth.co.uk



DESCRIPTION:

Conveniently positioned near an array of transport links; both Queensway (Central Line) (Zone 1) and Bayswater (Circle and District Line) stations. Paddington mainline station provides national and international connections via the Heathrow Express and the Elizabeth Line. The green open spaces of Hyde Park and Kensington Gardens are just a short stroll away. To the West, you have the popular, fashionable, and multi-cultural Notting Hill.



Winkworth

for every step...



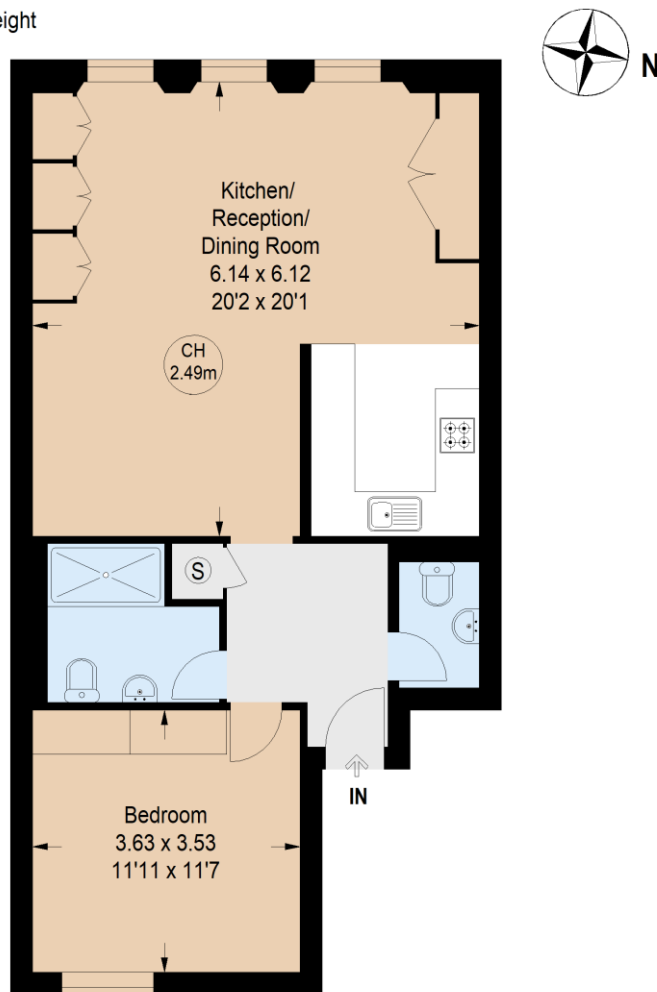
Winkworth

for every step...

Inverness Terrace, W2

Approximate Gross Internal Area = 64.66 sq m / 696 sq ft

Key :
CH - Ceiling Height



Fourth Floor

Not to scale, for guidance only and must not be relied upon as a statement of fact.
All measurements and areas are approximate only

This floorplan is for illustration purposes only and is not to scale. The position and size of doors, windows, appliances and other features are approximate.

Tenure: Leasehold

Term: 978 year and 3 months

Service Charge: About £4,100 per annum

Ground Rent: About - Peppercorn

Council Tax Band: F

Where no figures are shown, we have been unable to ascertain the information. All figures that are shown were correct at the time of printing.

Paddington & Bayswater | 020 7467 5770 | paddington@winkworth.co.uk

Winkworth

for every step...

winkworth.co.uk

Winkworth wishes to inform prospective buyers and tenants that these particulars are a guide and act as information only. All our details are given in good faith and believed to be correct at the time of printing but they don't form part of an offer or contract. No Winkworth employee has authority to make or give any representation or warranty in relation to this property. All fixtures and fittings, whether fitted or not are deemed removable by the vendor unless stated otherwise and room sizes are measured between internal wall surfaces, including furnishings.