



MYDDLETON AVENUE, LONDON, N4
£435,000 LEASEHOLD

DESCRIPTION:

This fantastic two-bedroom apartment is situated on the top floor of a modern development on Myddleton Avenue. It boasts a private parking space and access to a communal garden, all while being ideally positioned between the expansive green spaces of Finsbury Park and Clissold Park. Chain Free.

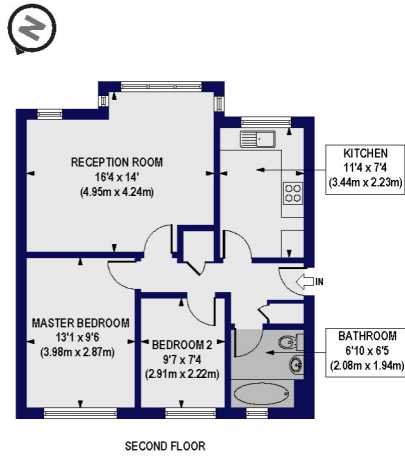
Harringay | 020 8800 5151 | harringay@winkworth.co.uk

Winkworth

for every step...

winkworth.co.uk

Myddleton Avenue, N4
 Approx. Gross Internal Floor Area 617 sq. ft / 57.32 sq. m

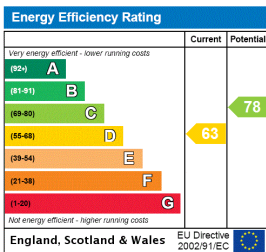


SECOND FLOOR

All measurements of walls, doors, windows, fittings and appliances, including their size and location, are shown as standard sizes and do not constitute a warranty or representation by the vendor. Care should be taken as to the units used in the floor plan. Measurements are given as to the internal or external dimensions in these plans. Depend on the fixtures, fittings and manufacturer details for any prospective purchases.



This floorplan is for illustration purposes only and is not to scale. The position and size of doors, windows, appliances and other features are approximate.



Tenure: Leasehold

Term: 161 year and 4 months

Service Charge: £0 per annum

Ground Rent: £ 0 Annually (subject to increase)

Council Tax Band:

Where no figures are shown, we have been unable to ascertain the information. All figures that are shown were correct at the time of printing.

Harringay | 020 8800 5151 | harringay@winkworth.co.uk



for every step...

winkworth.co.uk

Winkworth wishes to inform prospective buyers and tenants that these particulars are a guide and act as information only. All our details are given in good faith and believed to be correct at the time of printing but they don't form part of an offer or contract. No Winkworth employee has authority to make or give any representation or warranty in relation to this property. All fixtures and fittings, whether fitted or not are deemed removable by the vendor unless stated otherwise and room sizes are measured between internal wall surfaces, including furnishings.