



THE ARBOR, LONDON, NW6 £725,000 LEASEHOLD

This fantastic two bedroom, two bathroom property in NW6 is the perfect combination of luxury living whilst being in a central location. The property boasts views of the park from the balcony. The property has been designed with modern and stylish finishes throughout, featuring a fully equipped kitchen with Siemens appliances, an open-plan living area with ample natural light, two double bedrooms (one en-suite) with built-in wardrobes.

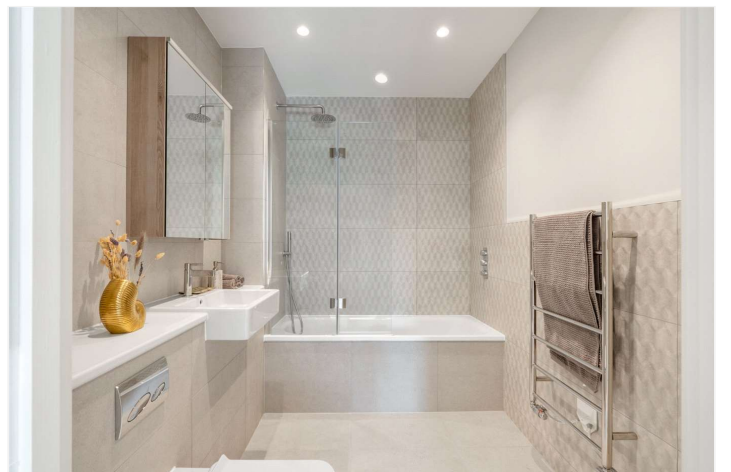
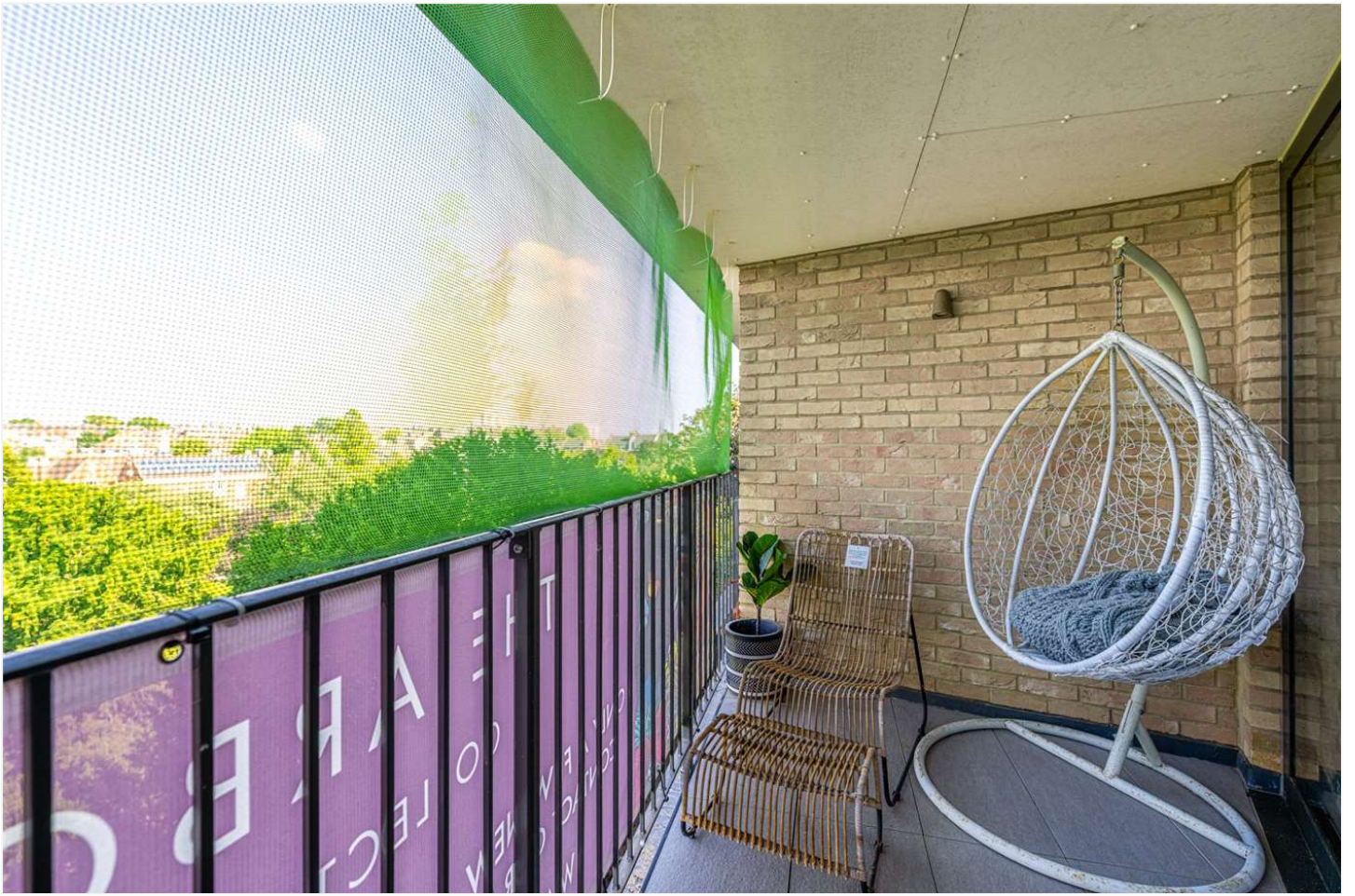
With the park just moments away, providing an outdoor gym, playground and large green area perfect for picnics. There are also many shops, restaurants, and cafes in the area, making it an ideal location for those who like to stay close to the action. With excellent public transportation options, it is easy to get around the city with both the Jubilee Line and London Overground Services being within 0.5m of the property.

Two Bedrooms | Two Bathrooms | Reception Room | Kitchen | Balcony | Communal Gardens

Winkworth

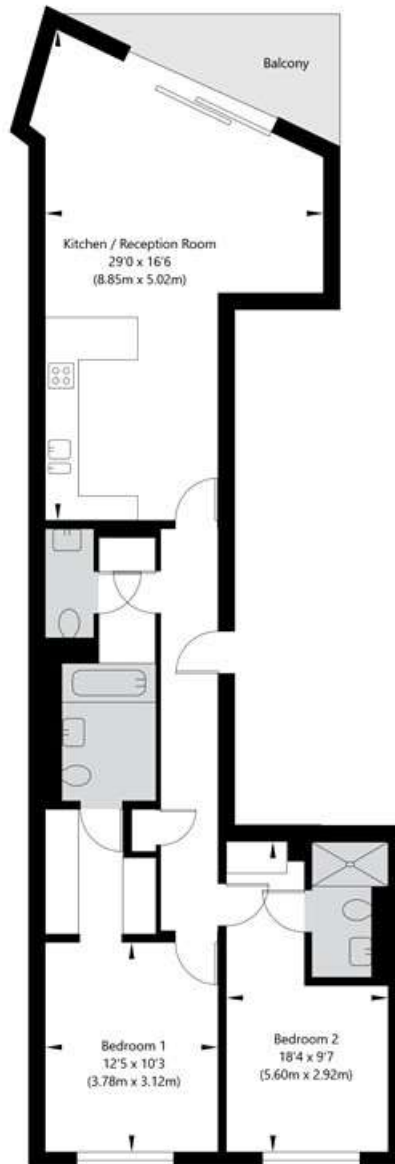
for every step...

[winkworth.co.uk/west-hampstead](https://www.winkworth.co.uk/west-hampstead)



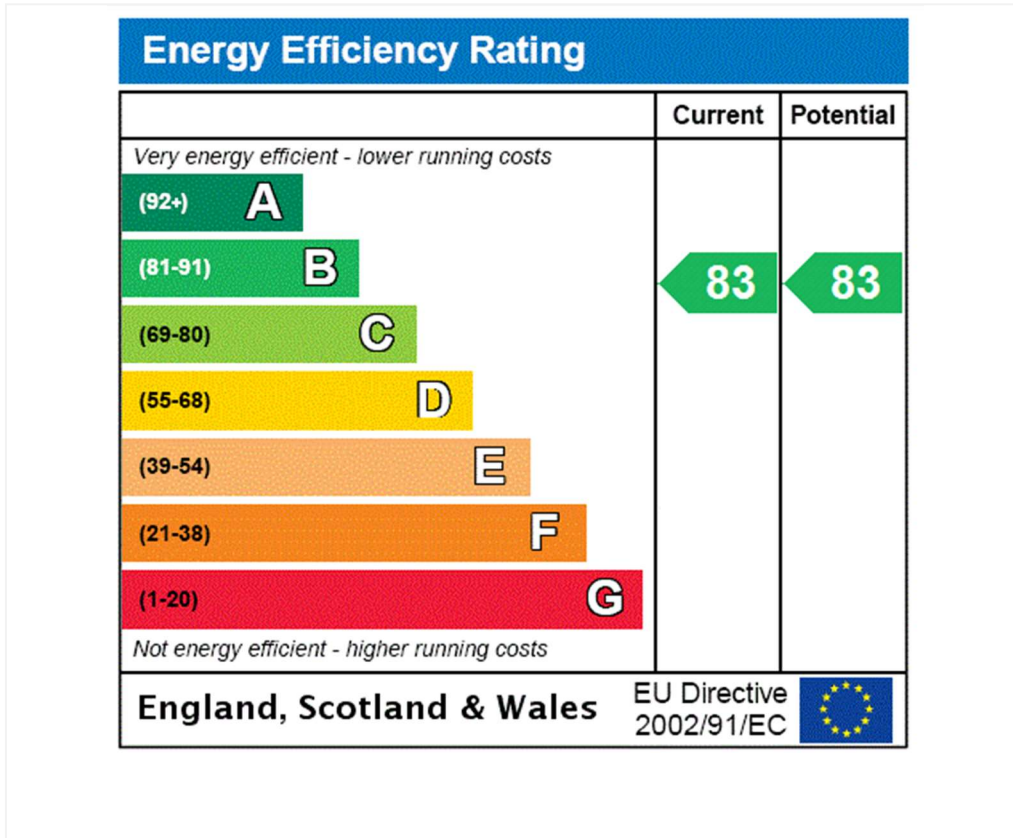
Kilburn High Road, The Arbor, Kilburn, London, NW6 2BS

Third Floor
GROSS INTERNAL FLOOR AREA
APPROX. 83.94 SQ M / 904 SQ FT



APPROXIMATE GROSS INTERNAL FLOOR AREA 83.94 SQ M / 904 SQ FT
THIS FLOOR PLAN IS FOR ILLUSTRATIVE PURPOSES ONLY AND
SHOULD BE USED FOR THIS PURPOSE BY PROSPECTIVE APPLICANTS AS ITS NOT TO SCALE.

(c) AMBERSHORE PIX LIMITED / PHOTO - VIDEO - FLOOR PLANS / 0800 999 1577 / WWW.AMERSHOREPIX.CO.UK



Tenure: Leasehold

Term: Expires - 24/06/2270

Service Charge: £3,289.54 per annum

Ground Rent: £450 Annually (subject to increase)

Council Tax Band: G

Where no figures are shown, we have been unable to ascertain the information. All figures that are shown were correct at the time of printing.

Where no figures are shown, we have been unable to ascertain the information. All figures that are shown were correct at the time of printing. These particulars are not an offer or contract, nor part of one. You should not rely on statements by Winkworth in the particulars or by word of mouth or in writing "information" as being factually accurate about the property, its condition or its value. Winkworth does not have any authority to make any representations about the property, and accordingly any information given is entirely without responsibility on the part of the agents, seller(s) or lessor(s). These particulars are prepared on the basis of the information supplied by our client and are a rough guide for information only. The photographs show only certain parts of the property. We are not able to check all of the information and therefore are unable to guarantee accuracy. All interested parties are therefore advised to undertake all necessary inspections and checks that they deem appropriate. Where displayed, the square footage is taken from the floor plans, which are created by an independent supplier. These measurements are approximate and included for illustrative purposes only. The measurements may vary. Winkworth does not make any representation as to the accuracy of these measurements and you should seek to verify them for yourself. Winkworth accept no liability for any loss you may suffer if you rely on these measurements. All fixtures and fittings, whether fitted or not are deemed removable by the vendor unless stated. Any reference to alterations to, or use of, any part of the property does not mean that any necessary planning, building regulations or other consent has been obtained. Amenities and appliances have not been tested



West Hampstead | 142 West End Lane, London, NW6 1SD | 020 7483 7602 |

westhampstead@winkworth.co.uk

for every step...

winkworth.co.uk/west-hampstead

Winkworth wishes to inform prospective buyers and tenants that these particulars are a guide and act as information only. All our details are given in good faith and believed to be correct at the time of printing but they don't form part of an offer or contract. No Winkworth employee has authority to make or give any representation or warranty in relation to this property. All fixtures and fittings, whether fitted or not are deemed removable by the vendor unless stated otherwise and room sizes are measured between internal wall surfaces, including furnishings.