



**27 Redwood Drive**  
Ferndown, BH22 9UG  
**Guide Price £685,000**





GUIDE PRICE £685,000  
FREEHOLD

This superbly positioned, immaculate four/five double bedroom, two bathroom, detached family home is tucked away at the end of a popular, very pleasant cul-de-sac backing onto a protected nature reserve, perfect for dog walks and those who enjoy the outdoors!

The property further benefits from a totally secluded low maintenance rear garden, generous off road parking and a detached double garage.

Immaculate Detached House  
En-suite Bedroom  
Modern Kitchen/Breakfast Room  
Sought After Cul-De-Sac  
Backing Onto Protected Nature Reserve  
Double Garage With Eaves Storage  
Generous Off Road Parking  
Very Secluded Garden  
Study/Fifth Bedroom  
Downstairs Cloakroom

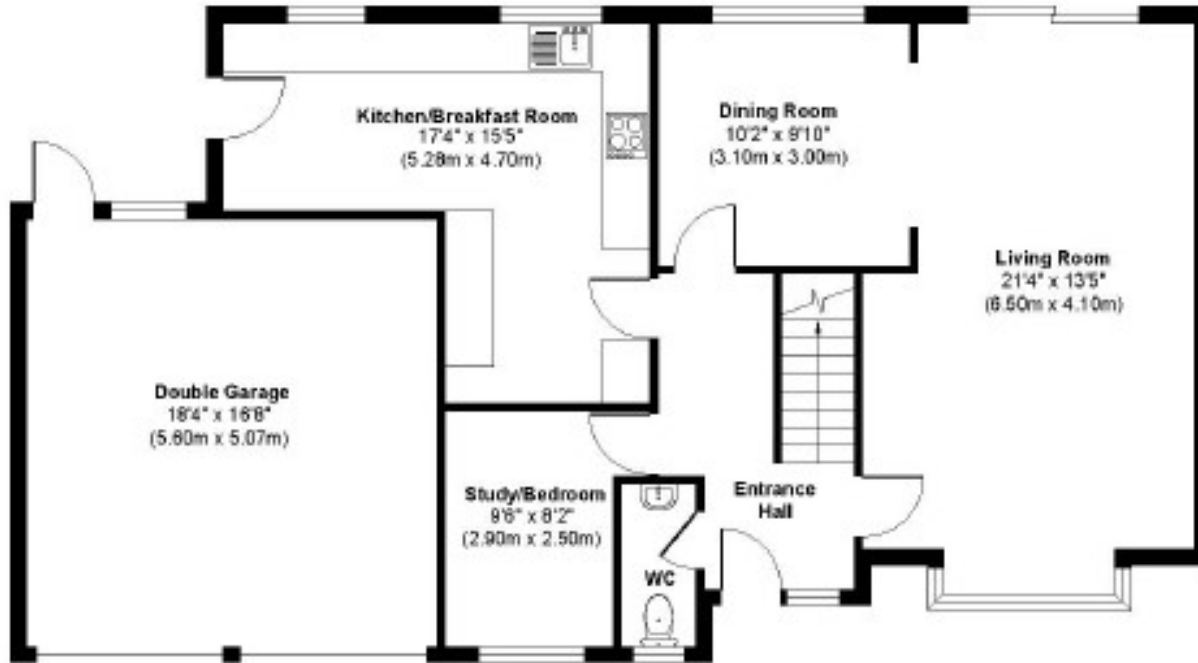
EPC D | Council Tax Band F

01202 434365  
ferndown@winkworth.co.uk

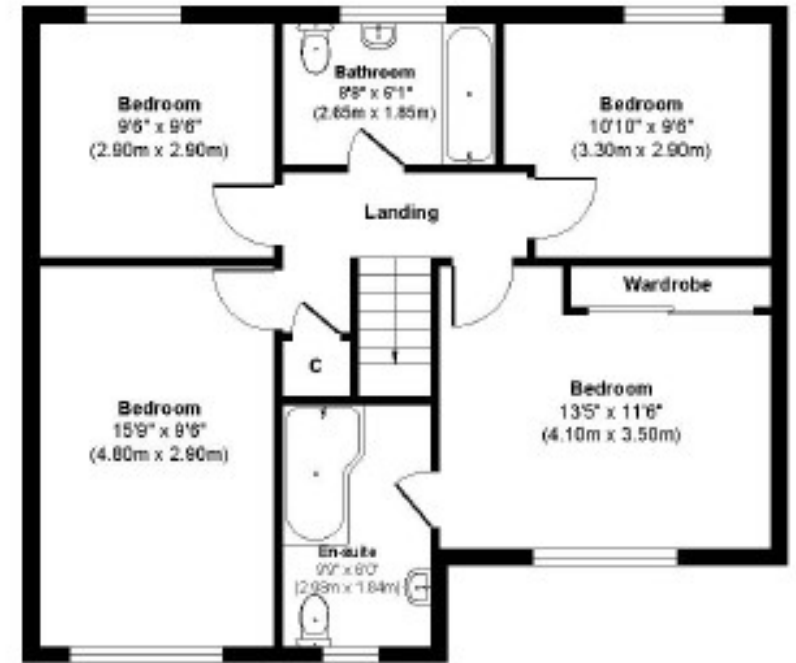




## Redwood Drive



Ground Floor  
Approximate Floor Area  
1076 sq. ft  
(99.95 sq. m)



First Floor  
Approximate Floor Area  
695 sq. ft  
(64.56 sq. m)

**Approx. Gross Internal Floor Area 1771 sq. ft / 164.51 sq. m**

Illustration for identification purposes only, measurements approximate and not to scale.



## LOCATION

Redwood Drive is a very desirable residential location just a short distance from Ferndown town centre, within catchment of Ferndown Schools and close to a range of amenities including an M&S Foodhall. The property backs onto a protected nature reserve that takes you across to the Castleman Trailway, Moors Valley and beyond making it ideal for those who enjoy the outdoors. There are bus routes within a short walk giving you easy access to Bournemouth, Poole and Wimborne, all of which have an excellent range of shops, bars, restaurants and leisure facilities. Award winning sandy beaches are just twenty minutes away and the A31 provides quick access to the New Forest, Southampton, London and beyond for the commuter by car.

Winkworth Ferndown

406 Ringwood Road, Ferndown, Dorset, BH22 9AU

01202 434365 | [ferndown@winkworth.co.uk](mailto:ferndown@winkworth.co.uk)

[winkworth.co.uk/ferndown](http://winkworth.co.uk/ferndown)

**Winkworth**