



QUINCE HOUSE, LONDON, SW16
£1,600 PER MONTH UNFURNISHED

A MODERN TWO BEDROOM, TWO BATHROOM APARTMENT WITH BALCONY

Streatham | 020 8769 6699 | streatham@winkworth.co.uk

Winkworth

for every step...

winkworth.co.uk

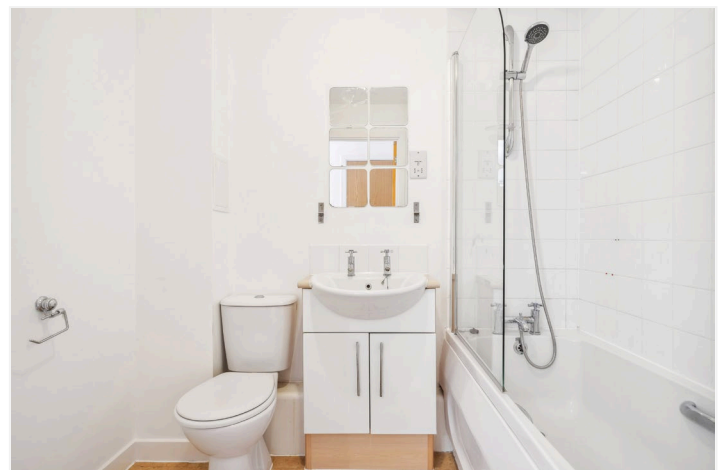


DESCRIPTION:

Set within landscaped gardens benefitting from a private parking space, this bright and airy second floor purpose-built apartment has been recently redecorated in a neutral white colour scheme and has brand new carpet throughout and comprises: a principal double bedroom with an ensuite shower room and WC, a further double bedroom and a modern white bathroom. There is a separate fitted kitchen with integrated appliances and a light-filled reception room that opens out to a sunny west-facing balcony with space for a small table and chairs. Hemlock Close is a quiet, low-rise collection of apartments and maisonettes and is set within the up-and-coming residential area of Streatham Vale. The nearest shops and cafes are around the corner in a small parade on Rowan Road and there is a large LIDL supermarket there too. Public transport is from Mitcham Eastfields or Streatham Common stations which both run a regular commuter service into London Victoria. Available now, unfurnished.

AT A GLANCE

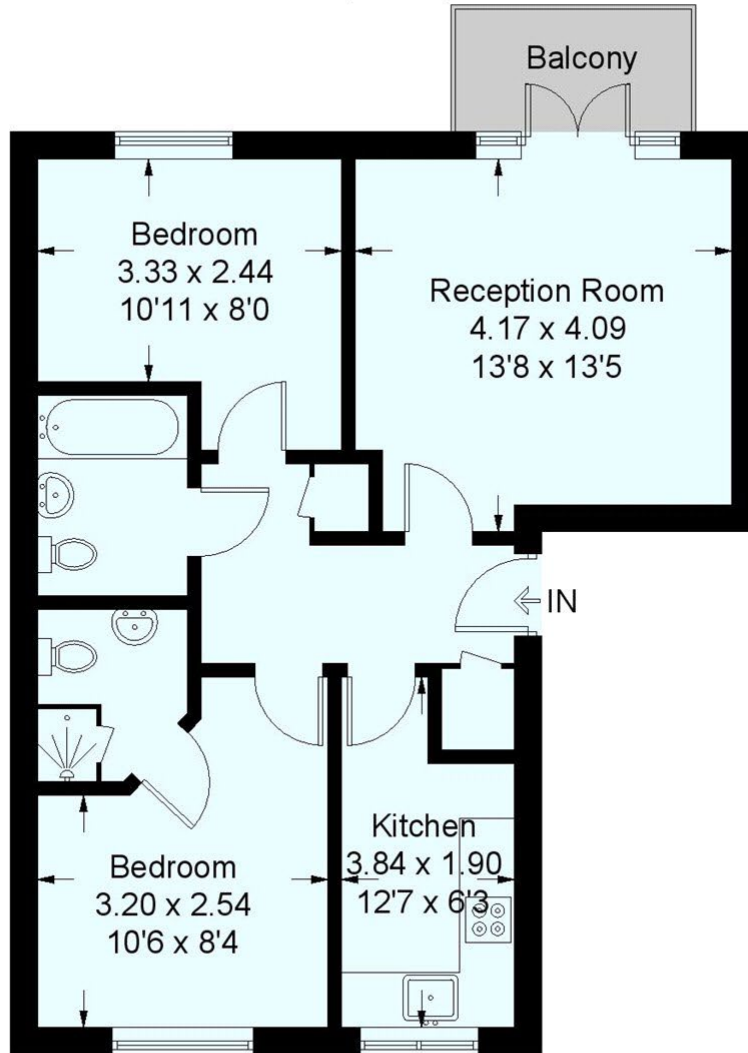
- Second Floor
- Two Double Bedrooms
- Bathroom & En-Suite Shower Room
- Reception
- Fitted Kitchen
- Private Balcony
- Communal Gardens
- Own Parking Space
- Available Now
- Merton Council Tax Band: C





Quince House, Hemlock Close, SW16

Approximate Gross Internal Area
59.6 sq m / 641 sq ft



Second Floor

This plan is for layout guidance only. Not drawn to scale unless stated. Windows and door openings are approximate. Whilst every care is taken in the preparation of this plan, please check all dimensions, shapes and compass bearings before making any decisions reliant upon them. (ID482821)

This floorplan is for illustration purposes only and is not to scale. The position and size of doors, windows, appliances and other features are approximate.

Streatham | 020 8769 6699 | streatham@winkworth.co.uk

Winkworth

for every step...

winkworth.co.uk

Winkworth wishes to inform prospective buyers and tenants that these particulars are a guide and act as information only. All our details are given in good faith and believed to be correct at the time of printing but they don't form part of an offer or contract. No Winkworth employee has authority to make or give any representation or warranty in relation to this property. All fixtures and fittings, whether fitted or not are deemed removable by the vendor unless stated otherwise and room sizes are measured between internal wall surfaces, including furnishings.