



**CHELSEA CLOISTERS, SLOANE AVENUE, LONDON, SW3  
£325 PER WEEK FURNISHED**

**A NEWLY REFURBISHED STUDIO FLAT LOCATED IN A VERY POPULAR PORTERED BUILDING IN THE HEART OF CHELSEA. SLOANE AVENUE IS A SOUGHT-AFTER ADDRESS OFFERING ACCESS TO A NUMBER OF PARKS IN THE LOCAL AREA, BARS, RESTAURANTS AND OTHER AMENITIES ON KINGS ROAD AND FULHAM ROAD**

**Knightsbridge & Chelsea | 0207 589 6616 | [knightsbridge@winkworth.co.uk](mailto:knightsbridge@winkworth.co.uk)**

**Winkworth**

Tenant Fees Apply: Details of fees for tenant referencing, tenancy agreement admin fees and renewal fees are available on the Winkworth website and the link can be found with the displayed rent for the property. Tenants should ensure they are fully conversant with these upfront fees and other costs that are involved at the outset of the tenancy before making an offer to rent and your local Winkworth office will provide written details upon request.

*[winkworth.co.uk](http://winkworth.co.uk)*

See things differently

CHELSEA CLOISTERS  
 8TH FLOOR  
 APPROXIMATE GROSS INTERNAL AREA: 247 sqft / 23 sqm

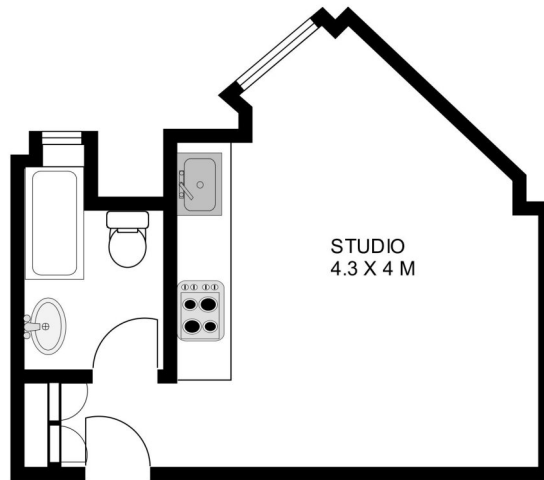
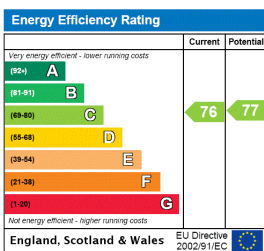


ILLUSTRATION FOR IDENTIFICATION PURPOSES ONLY  
 MEASUREMENTS ARE APPROXIMATE AND MAXIMUM, AND INCLUDE WINDOW'S  
 AND WARDROBES  
 PLAN MUST NOT BE REPRODUCED WITHOUT PERMISSION

This floorplan is for illustration purposes only and is not to scale. The position and size of doors, windows, appliances and other features are approximate.



Knightsbridge & Chelsea | 0207 589 6616 | knightsbridge@winkworth.co.uk



winkworth.co.uk

See things differently

Winkworth wishes to inform prospective buyers and tenants that these particulars are a guide and act as information only. All our details are given in good faith and believed to be correct at the time of printing but they don't form part of an offer or contract. No Winkworth employee has authority to make or give any representation or warranty in relation to this property. All fixtures and fittings, whether fitted or not are deemed removable by the vendor unless stated otherwise and room sizes are measured between internal wall surfaces, including furnishings.