



CLARENDON ROAD, LONDON, W11  
**£1,995 PER MONTH**

**Winkworth**



## CLARENDON ROAD, LONDON, W11

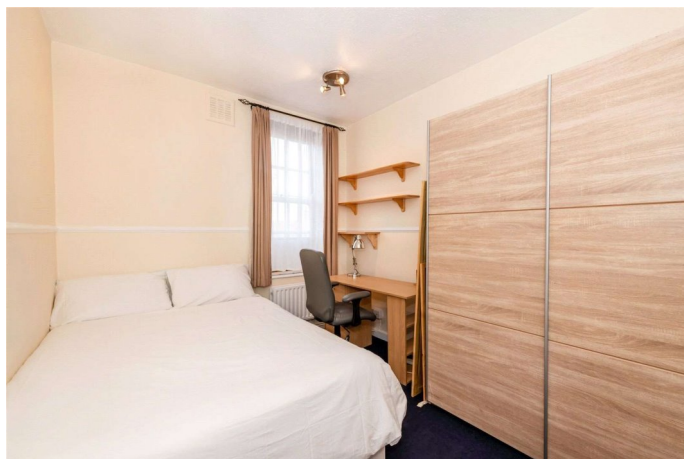
A bright South facing two bedroom flat on the fourth floor of this well maintained 1930's block in North Kensington. Benefits include a lovely south facing balcony, sitting room, kitchen and two double bedrooms.

The block is located perfectly for access to the trendy shops and restaurants of Notting Hill and the Portobello Road. Additionally, the Kensington Leisure Centre with swimming pool, squash court, large sports hall and gym is around the corner.

Ladbroke grove Station (Hammersmith and City Line) is a mere six minute walk away with Holland Park Station (Central Line) a twelve minute walk away.

### LOCATION

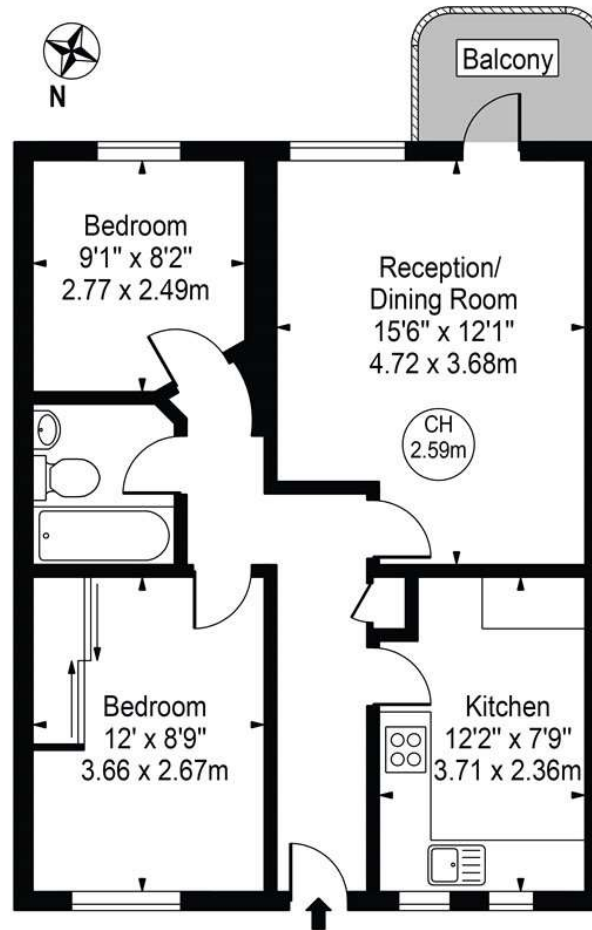
### DIRECTIONS





# Nottingwood House

Approx. Gross Internal Area 613 Sq Ft - 56.95 Sq M



## Fourth Floor

For Illustration Purposes Only - Not To Scale

This floor plan should be used as a general outline for guidance only and does not constitute in whole or in part an offer or contract. Any intending purchaser or lessee should satisfy themselves by inspection, searches, enquiries and full survey as to the correctness of each statement. Any areas, measurements or distances quoted are approximate and should not be used to value a property or be the basis of any sale or let.

North Kensington | 020 7792 5000 | northkensington@winkworth.co.uk

[winkworth.co.uk](http://winkworth.co.uk)

Winkworth wishes to inform prospective buyers and tenants that these particulars are a guide and act as information only. All our details are given in good faith and believed to be correct at the time of printing but they don't form part of an offer or contract. No Winkworth employee has authority to make or give any representation or warranty in relation to this property. All fixtures and fittings, whether fitted or not are deemed removable by the vendor unless stated otherwise and room sizes are measured between internal wall surfaces, including furnishings.

**Winkworth**