



GOODRICH ROAD, EAST DULWICH, SE22
£875,000 FREEHOLD

THIS LARGE THREE-BEDROOM VICTORIAN TERRACED HOUSE IS SITUATED ON A QUIET RESIDENTIAL ROAD IN THE CENTRE OF EAST DULWICH.

Dulwich | 020 8299 2722 | dulwich@winkworth.co.uk

Winkworth



DESCRIPTION:

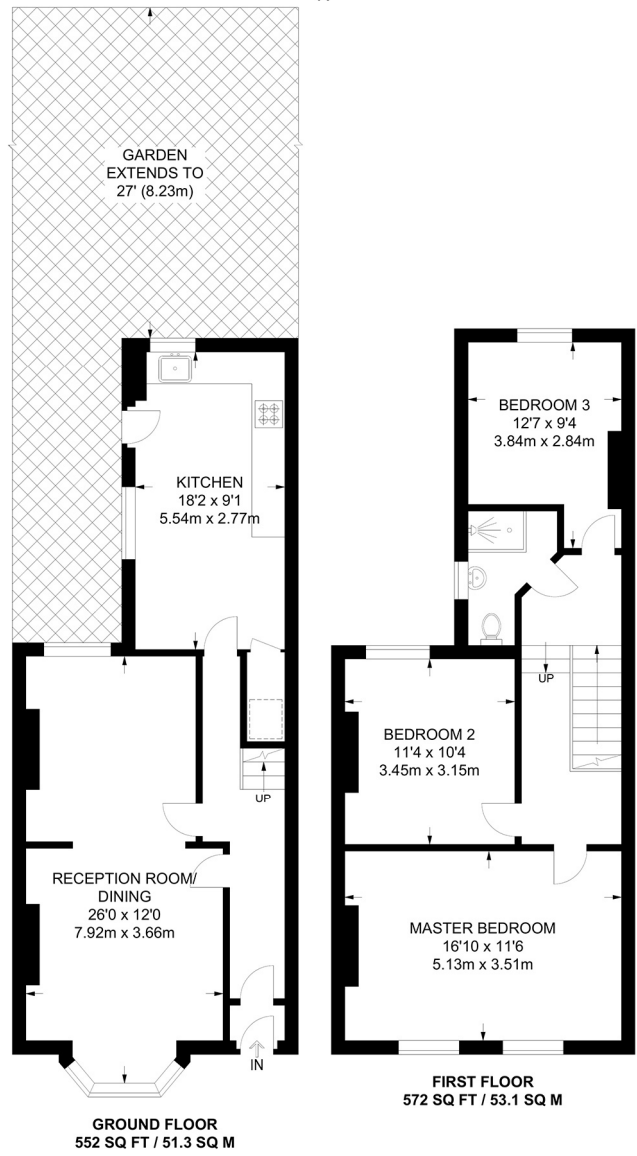
This large three-bedroom Victorian terraced house is situated on a quiet residential road in the centre of East Dulwich. The property offers three good double bedrooms, a shower room, large double reception room with high ceilings and a kitchen-diner with doors out onto a private garden. Brilliantly located moments from Goodrich School. This is a fantastic family house, with lots of room for growth. With easy access to Peckham Rye Park and the Dulwich Park. Close to the transport, with the East London line in Honor Oak and Peckham Rye, or East Dulwich station into London Bridge.

AT A GLANCE

- Three Double Bedrooms
- Victorian Terraced House
- Two Receptions
- Kitchen-Diner
- Shower Room
- Garden
- Excellent Location







APPROXIMATE GROSS INTERNAL AREA
1124 SQ FT / 104.4 SQ M

This floorplan is for illustration purposes only and is not to scale. The position and size of doors, windows, appliances and other features are approximate.

Dulwich | 020 8299 2722 | dulwich@winkworth.co.uk



winkworth.co.uk

See things differently

Winkworth wishes to inform prospective buyers and tenants that these particulars are a guide and act as information only. All our details are given in good faith and believed to be correct at the time of printing but they don't form part of an offer or contract. No Winkworth employee has authority to make or give any representation or warranty in relation to this property. All fixtures and fittings, whether fitted or not are deemed removable by the vendor unless stated otherwise and room sizes are measured between internal wall surfaces, including furnishings.