



CRESCENT ROAD, LONDON, N15  
**£875,000 FREEHOLD**

**DESCRIPTION:**

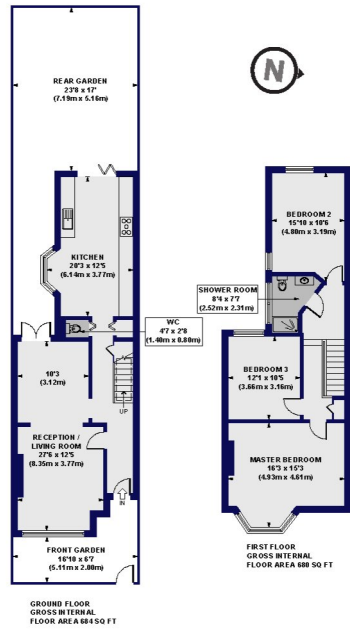
Settled on a quiet street within touching distance of Turnpike Lane Underground, this beautifully renovated Three-Bedroom Victorian Terrace with a private south-west facing garden, combines tasteful modern interior design with traditional period detailing, creating a bright and sociable family home.

Harringay | 020 8800 5151 | harringay@winkworth.co.uk



for every step...

Crescent Road, N15  
 Approx. Gross Internal Floor Area 1364 sq. ft / 126.75 sq. m



All measurements of walls, doors, windows, fittings and appliances, including their size and location, are shown as standard sizes and do not constitute a warranty or representation by the seller. Care should be taken to check the actual measurements of the property against the floor plan as the actual measurements may vary from those shown on the floor plan. The floor plan is for illustrative purposes only and should not be used for any other purposes.



This floorplan is for illustration purposes only and is not to scale. The position and size of doors, windows, appliances and other features are approximate.

Energy Efficiency Rating	
	Potential
Very energy efficient - lower running costs	
(92+) <b>A</b>	
(81-91) <b>B</b>	
(69-80) <b>C</b>	
(55-68) <b>D</b>	
(39-54) <b>E</b>	
(21-38) <b>F</b>	
(1-20) <b>G</b>	
Not energy efficient - higher running costs	
Current: <b>69</b>	Potential: <b>84</b>
England, Scotland & Wales	EU Directive 2002/91/EC

**Tenure:** Freehold

**Term:** 0 year and 0 months

**Service Charge:** £0 per annum

**Ground Rent:** £ 0 Annually (subject to increase)

**Council Tax Band:**

Where no figures are shown, we have been unable to ascertain the information. All figures that are shown were correct at the time of printing.

Harringay | 020 8800 5151 | harringay@winkworth.co.uk



for every step...

winkworth.co.uk

Winkworth wishes to inform prospective buyers and tenants that these particulars are a guide and act as information only. All our details are given in good faith and believed to be correct at the time of printing but they don't form part of an offer or contract. No Winkworth employee has authority to make or give any representation or warranty in relation to this property. All fixtures and fittings, whether fitted or not are deemed removable by the vendor unless stated otherwise and room sizes are measured between internal wall surfaces, including furnishings.