



**TYRRELL ROAD, EAST DULWICH, SE22**  
**£650,000 SHARE OF FREEHOLD**

**THIS LARGE THREE BEDROOM GROUND FLOOR GARDEN FLAT IS SITUATED JUST OFF LORDSHIP LANE AND PECKHAM RYE PARK.**

Dulwich | 020 8299 2722 | [dulwich@winkworth.co.uk](mailto:dulwich@winkworth.co.uk)

**Winkworth**



## DESCRIPTION:

This large three bedroom ground floor garden flat is situated in a quiet location, just off Lordship Lane and Peckham Rye Park. The property offers a large high ceiling reception with stunning period features, good size main double bedroom, second spare double bedroom, modern shower room, study/third bedroom, fully fitted modern kitchen and a shared garden to rear. The property is well located to benefit from easy access to the cafés, restaurants, shops and cinema on Lordship Lane. Transport links are provided via East Dulwich with connections to London Bridge, Peckham Rye for the overground or Honor Oak for the East London Line. This is a wonderful flat in a lovely location with early viewing recommended.

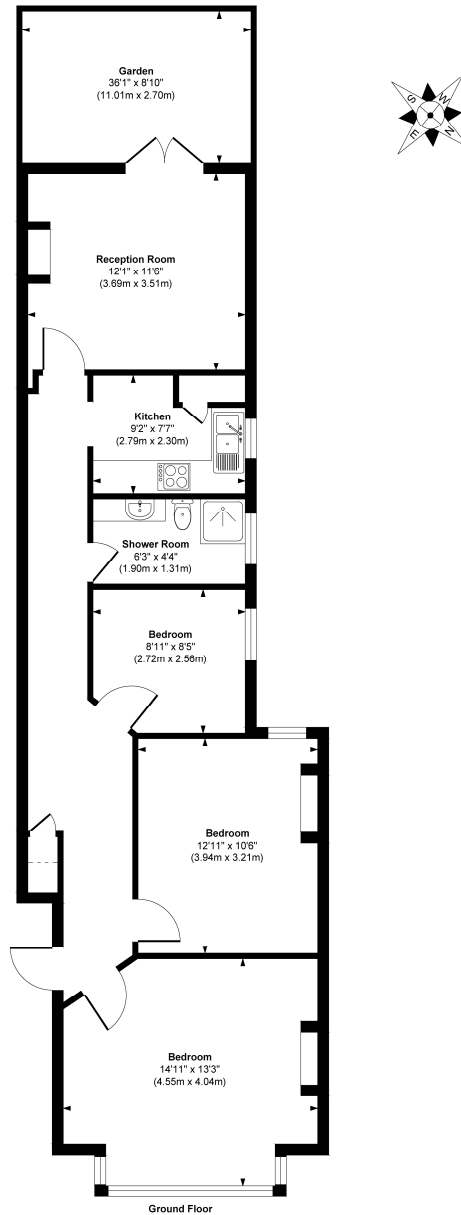
## AT A GLANCE

- Three Bedrooms
- Ground Floor Flat
- Reception
- Modern Kitchen
- Modern Shower Room
- Shared Garden
- Share Of Freehold
- Close To Peckham Rye Park





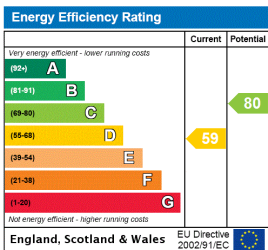
# Tyrrell Road



**Approx. Gross Internal Floor Area 819 sq. ft / 76.11 sq. m**

Illustration for identification purposes only, measurements are approximate, not to scale.  
Produced by Elements Property

This floorplan is for illustration purposes only and is not to scale. The position and size of doors, windows, appliances and other features are approximate.



Dulwich | 020 8299 2722 | [dulwich@winkworth.co.uk](mailto:dulwich@winkworth.co.uk)



[winkworth.co.uk](http://winkworth.co.uk)

See things differently

Winkworth wishes to inform prospective buyers and tenants that these particulars are a guide and act as information only. All our details are given in good faith and believed to be correct at the time of printing but they don't form part of an offer or contract. No Winkworth employee has authority to make or give any representation or warranty in relation to this property. All fixtures and fittings, whether fitted or not are deemed removable by the vendor unless stated otherwise and room sizes are measured between internal wall surfaces, including furnishings.