



ISLINGTON GREEN, LONDON, N1
£575,000 LEASEHOLD

A WONDERFUL ONE BEDROOM APARTMENT WITH AMAZING VIEWS OF ISLINGTON GREEN

Islington | 0207 354 2480 | islington@winkworth.co.uk

Winkworth

winkworth.co.uk

See things differently



DESCRIPTION:

Set across the first floor of this well-maintained block on Islington Green is this bright and airy one bedroom flat. Spanning over 600sqft, the property is flooded with natural light and boasts well-proportioned rooms throughout. Accommodation includes a bathroom, a generous bedroom with inbuilt wardrobes and a separate kitchen with integrated appliances and plentiful worktop space. The reception room is larger than average providing sufficient space for a dining table, with breathtaking views of Islington Green making it the perfect entertaining space.

The flat is perfectly situated on Islington Green and is ideally located for an array of local cafes, restaurants and shops on Upper Street as well as being within easy reach of Regents Canal and Granary Square at Kings Cross. Transport links are some of the best around with Angel station offering the closest underground links on the Northern line whilst further links across London are facilitated from Kings Cross.

Shoreditch and the City can be easily reached on foot although many prefer a leisurely cycle or an effortless bus ride from one of the many stops located nearby.

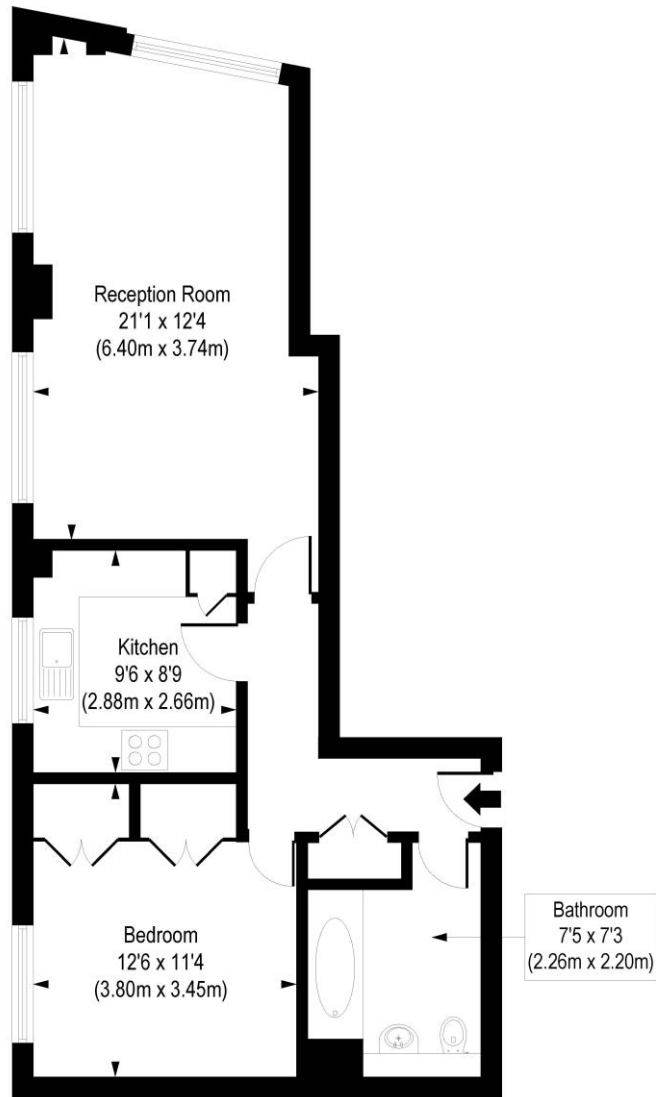
Winkworth



Winkworth

Islington Green, N1

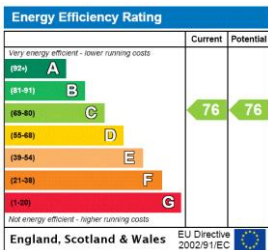
Approx. Gross Internal Floor Area 617 sq. ft / 57.33 sq. m



First Floor

COMPLIANT WITH RICS CODE OF MEASURING PRACTICE. Floorplan is for illustrative purposes only and is not to scale. Every attempt has been made to ensure the accuracy of the floorplan shown, however all measurements, fixtures, fittings and data shown are an approximate interpretation for illustrative purposes only. Liability for errors, omissions or mis-statement through negligence or otherwise is hereby excluded.

This floorplan is for illustration purposes only and is not to scale. The position and size of doors, windows, appliances and other features are approximate.



Islington | 0207 354 2480 | islington@winkworth.co.uk



winkworth.co.uk

See things differently

Winkworth wishes to inform prospective buyers and tenants that these particulars are a guide and act as information only. All our details are given in good faith and believed to be correct at the time of printing but they don't form part of an offer or contract. No Winkworth employee has authority to make or give any representation or warranty in relation to this property. All fixtures and fittings, whether fitted or not are deemed removable by the vendor unless stated otherwise and room sizes are measured between internal wall surfaces, including furnishings.