



WEST HEATH AVENUE, NW11
£499,950 LEASEHOLD

A large one bedroom apartment set on the raised ground floor of a popular mansion block

LARGE ONE BEDROOM APARTMENT/ RAISED GROUND FLOOR
POPULAR MANSION BLOCK CLOSE TO TUBE/ OPEN PLAN KITCHEN / LIVING ROOM/ LEASEHOLD - APPROX 977 YEARS REMAINING/ CHAIN FREE/ EPC RATING: C/ COUNCIL TAX BAND: E



DESCRIPTION:

A large one bedroom apartment set on the raised ground floor of a popular mansion block a short walk from Golders Green (Northern Line) Station.

Apartment comprises an open plan kitchen living room, large tiled bathroom suite and a well sized master bedroom.

Leasehold

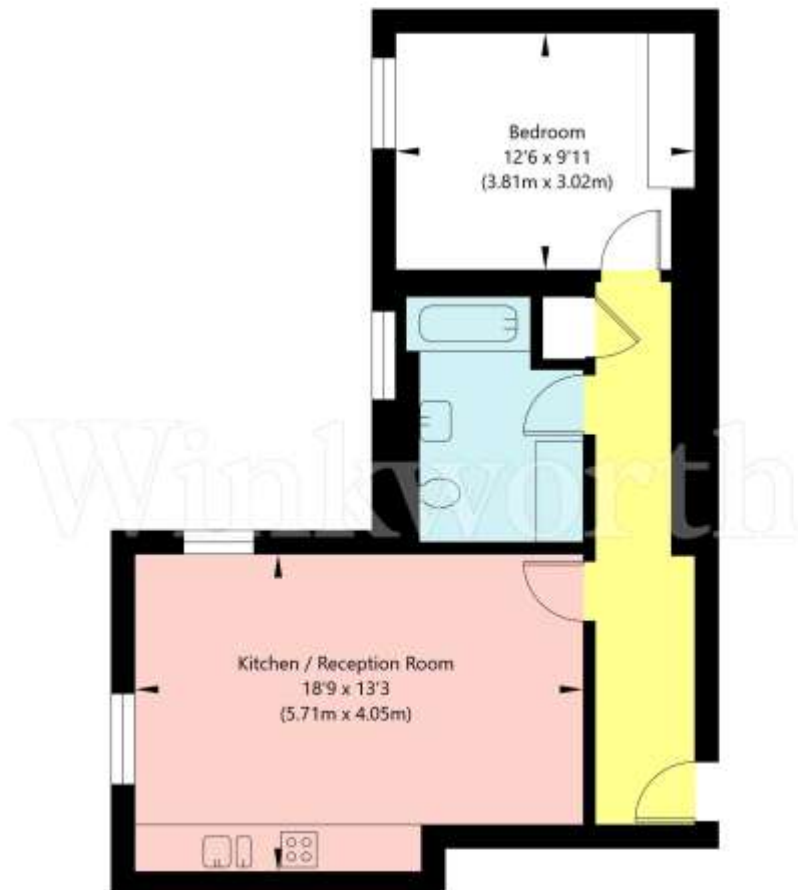
Chain Free





West Heath Avenue, London NW11 7QY

Raised Ground Floor
GROSS INTERNAL FLOOR AREA
APPROX. 52.09 SQ M / 561 SQ FT



APPROXIMATE GROSS INTERNAL FLOOR AREA 52.09 SQ M / 561 SQ FT
THIS FLOOR PLAN IS FOR ILLUSTRATIVE PURPOSES ONLY AND
SHOULD BE USED FOR THIS PURPOSE BY PROSPECTIVE APPLICANTS AS ITS NOT TO SCALE.

(c) AMBERSHORE PIX LIMITED / PHOTO - VIDEO - FLOOR PLANS / 0800 999 1577 / WWW.AMERSHOREPIX.CO.UK