



**MURILLO ROAD, HITHER GREEN, LONDON, SE13 5QQ**  
**GUIDE PRICE £800,000-£850,000 FREEHOLD**

**A STUNNING AND VASTLY IMPROVED, THREE DOUBLE BEDROOM PERIOD HOME WITH A LARGER THAN USUAL SOUTH FACING GARDEN AND SET IN THIS OUTSTANDING LOCATION CLOSE TO MANOR HOUSE GARDENS, BLACKHEATH VILLAGE AND HITHER GREEN STATION.**

Blackheath | 0208 8520999 | [blackheath@winkworth.co.uk](mailto:blackheath@winkworth.co.uk)

**Winkworth**



### DESCRIPTION:

The property has been extensively refurbished by the current vendor, both internally and externally, and is finished to a high standard. Features include; high ceilings, cornicing, electric rewired, wood flooring, double glazed windows, plantation shutters, period fireplaces and gas fired central heating.

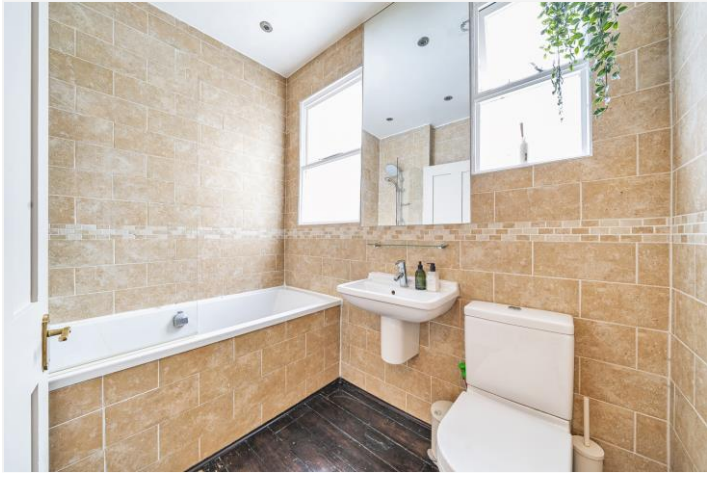
The accommodation comprises; entrance hall with understairs storage and downstairs WC, a large through reception room with bay window to the front and a large kitchen diner with a beautiful modern kitchen with quartz worktops and integrated appliances. Upstairs are three double bedrooms including a very large master to the front and an attractive modern family bathroom. To the rear is a superb 40ft south facing garden.

This is an impressive period home and will be extremely popular. Your immediate viewing is essential. Video tour can be seen at [winkworth.co.uk](http://winkworth.co.uk)

The property is in a popular location for families within the Lee Manor Conservation area and on the doorstep of Manor House Gardens as well as being close to Manor Park, Blackheath Common and Greenwich. Manor House Gardens with its children's play park and farmers market is a mere three-minute walk away. Additionally, the area offers a range of dining and shopping options, including the M&S Food Court and various independent establishments such as La Delice, Found Hope Store, Drink@Bob's, Otto's Greenhouse, Sapore Vero, and Park Fever. Blackheath Village is a short walk offering an array of amenities including bars, restaurants, boutique shops and farmers market.

Transportation is seamless with Hither Green Station providing access to Central London and London Bridge in just 11 minutes. Other nearby transport options include Blackheath Station, offering connections to London Bridge, Charing Cross, Victoria, and more. With access to the DLR, London Overground, buses, riverboats, foot tunnels, and cable cars, commuting to Canary Wharf, the City, and central London is effortless. There are several Ofsted rated "Outstanding" primary schools and excellent children's day nursery options close by in Lee and Blackheath.





# Murillo Road, London, SE13

Approximate Area = 1093 sq ft / 101.5 sq m

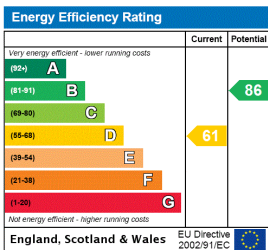
For identification only - Not to scale



Floor plan produced in accordance with RICS Property Measurement Standards incorporating International Property Measurement Standards (IPMS2 Residential). © nrichecom 2024. Produced for Winkworth. REF: 1133955



This floorplan is for illustration purposes only and is not to scale. The position and size of doors, windows, appliances and other features are approximate. Any lease and service charge details have been provided by the vendor. Any interest party should have these checked by a solicitor as part of the purchase process.



Blackheath | 0208 8520999 | blackheath@winkworth.co.uk



winkworth.co.uk

See things differently

Winkworth wishes to inform prospective buyers and tenants that these particulars are a guide and act as information only. All our details are given in good faith and believed to be correct at the time of printing but they don't form part of an offer or contract. No Winkworth employee has authority to make or give any representation or warranty in relation to this property. All fixtures and fittings, whether fitted or not are deemed removable by the vendor unless stated otherwise and room sizes are measured between internal wall surfaces, including furnishings.