



BASING WAY, FINCHLEY, LONDON, N3
£410,000 - LEASEHOLD

A WELL PRESENTED FIRST FLOOR FLAT

Finchley | 020 8349 3388 | finchley@winkworth.co.uk

Winkworth

for every step...

winkworth.co.uk



DESCRIPTION:

We are pleased to offer this well-presented and spacious two bedroom first floor flat, ideally located for local amenities and transport links, such as Finchley Central underground. The property comprises of a large reception room with access to balcony, modern fitted kitchen & bathroom, two double bedrooms and a storage cupboard which has been utilised to create a study area. This would be an ideal purchase for a first time buyer (stamp duty free) or buy to let investment. An internal viewing would be highly recommended!

AT A GLANCE

- Purpose built block
- First floor
- Spacious reception room
- Modern kitchen & bathroom
- Two double bedrooms
- Study area
- Balcony

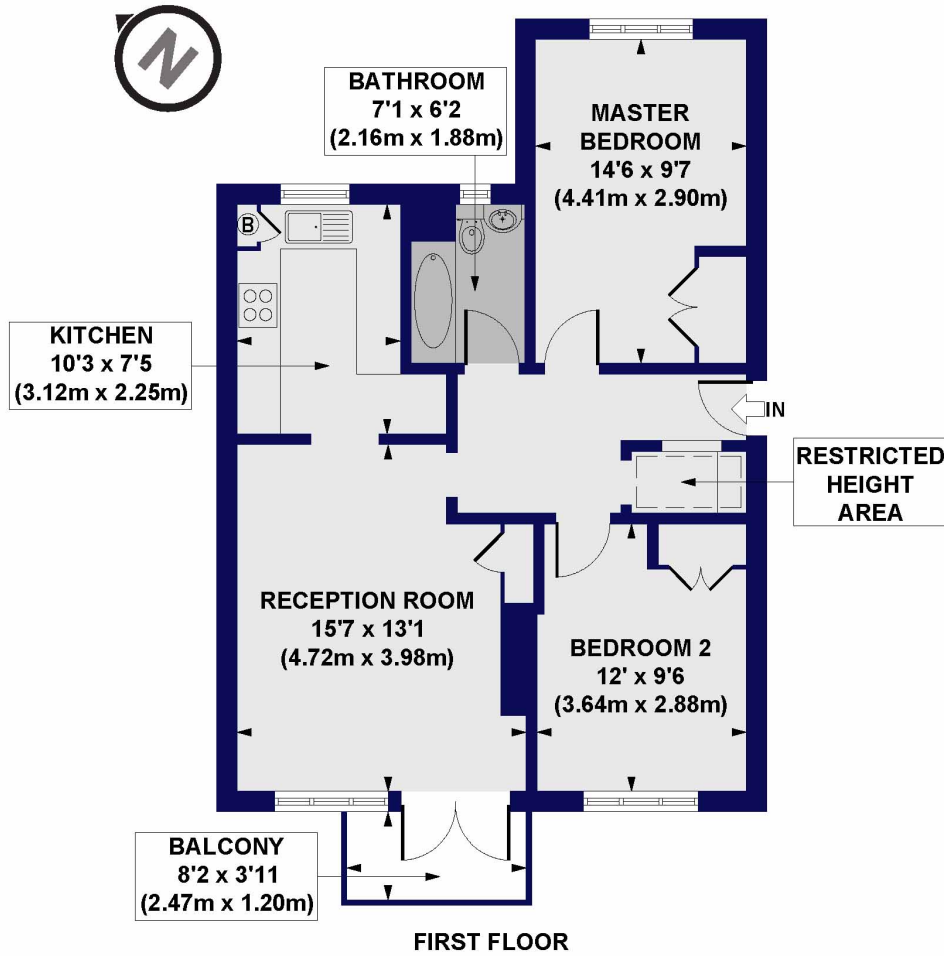




Basing Way, N3

Approx. Gross Internal Floor Area 673 sq. ft / 62.53 sq. m (Including Restricted Height Area)

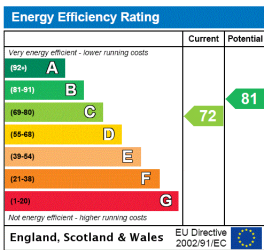
Approx. Gross Internal Floor Area 652 sq. ft / 60.56 sq. m (Excluding Restricted Height Area)



All measurements of walls, doors, windows, fittings and appliances, including their size and location, are shown as standard sizes and do not constitute any warranty or representation by the seller, their agent or CP Creative. Any intending purchaser must satisfy himself by inspection or otherwise as to the correctness of the information contained in these plans. This plan is for illustrative purposes only and should be used as such by any prospective purchasers.

Winkworth

This floorplan is for illustration purposes only and is not to scale. The position and size of doors, windows, appliances and other features are approximate.



Winkworth

Finchley | 020 8349 3388 | finchley@winkworth.co.uk

for every step...

winkworth.co.uk

Winkworth wishes to inform prospective buyers and tenants that these particulars are a guide and act as information only. All our details are given in good faith and believed to be correct at the time of printing but they don't form part of an offer or contract. No Winkworth employee has authority to make or give any representation or warranty in relation to this property. All fixtures and fittings, whether fitted or not are deemed removable by the vendor unless stated otherwise and room sizes are measured between internal wall surfaces, including furnishings.