



BODIAM COURT, LAKESIDE DRIVE, NW10

£475,000 LEASEHOLD

Lease: 988 years 3 months remaining
Ground Rent: £325 per annum (Reviewed every 10 years)
Service Charge: £3,167.06 per annum

(information supplied by Seller)

EPC: Band: B
Council Tax: Band D

Ealing & Acton | 0208 896 0123 | ealing@winkworth.co.uk

Winkworth

for every step...

winkworth.co.uk



DESCRIPTION:

Expansive two bedroom apartment in the popular Bodiam Court. This contemporary flat comprises an open-plan reception room with fully-equipped kitchen, two well-proportioned bedrooms, two modern bathrooms and plenty of storage space. The property further benefits from a private balcony, lift access and secure parking. Situated on Lakeside Drive, the property is ideally positioned for transport links into Central London. Not only are the A40 and North Circular nearby, but also the Piccadilly Line at Park Royal Station and Central Line at Hanger Lane Station. Close to amenities and parks, this is a perfect opportunity of a first time purchase as well as comfortable upsize/downsize option.



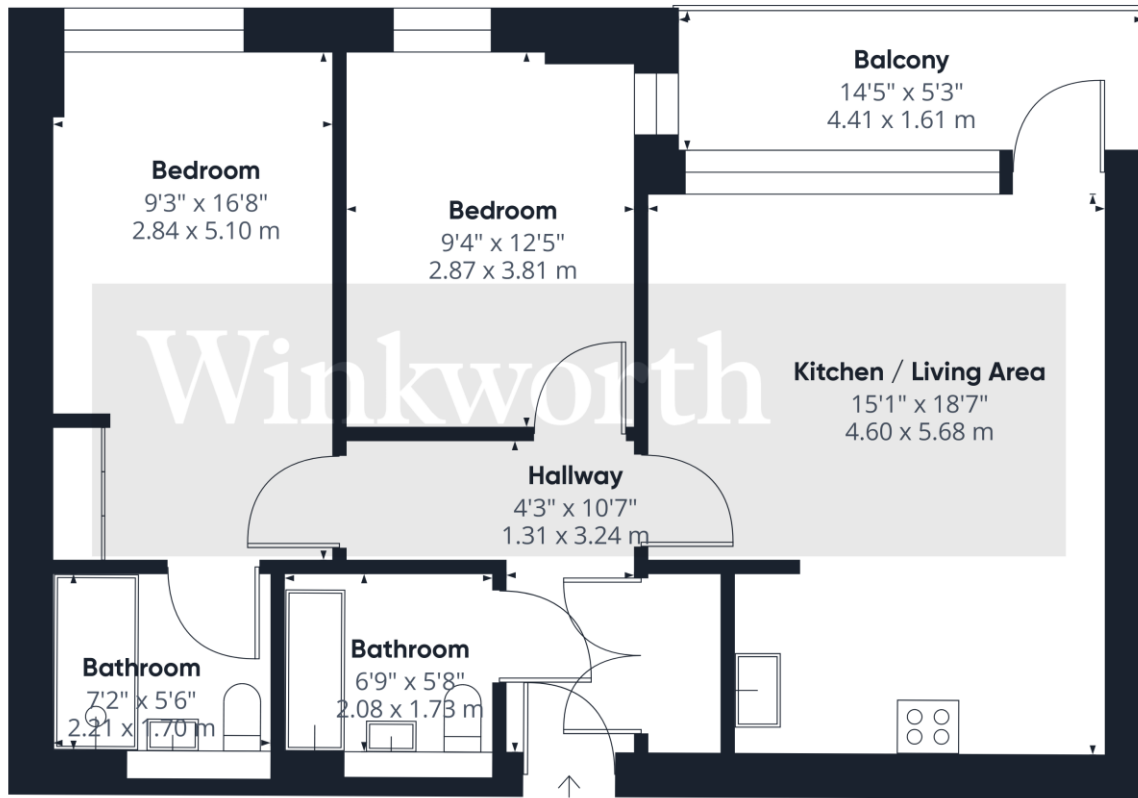
Winkworth

for every step...



Winkworth

for every step...



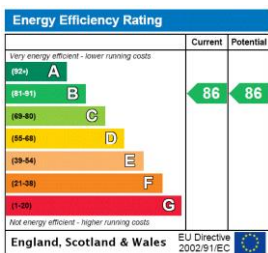
Approximate total area⁽¹⁾
716.56 ft²
66.57 m²

(1) Excluding balconies and terraces

While every attempt has been made to ensure accuracy, all measurements are approximate, not to scale. This floor plan is for illustrative purposes only.

GIRAFFE360

This floorplan is for illustration purposes only and is not to scale. The position and size of doors, windows, appliances and other features are approximate.



Ealing & Acton | 0208 896 0123 | ealing@winkworth.co.uk

Winkworth

for every step...

winkworth.co.uk

Winkworth wishes to inform prospective buyers and tenants that these particulars are a guide and act as information only. All our details are given in good faith and believed to be correct at the time of printing but they don't form part of an offer or contract. No Winkworth employee has authority to make or give any representation or warranty in relation to this property. All fixtures and fittings, whether fitted or not are deemed removable by the vendor unless stated otherwise and room sizes are measured between internal wall surfaces, including furnishings.