



Winkworth

for every step...

4  2  2  EPC = C

34 RAVEN WAY, MUDEFORD, CHRISTCHURCH, BH23 4BH

PRICE: £779,950 FREEHOLD

Winkworth

for every step...



# Executive style home on the sought after Saxon Landing development in the heart of Mundeford very well situated within a short walk of the picturesque Mundeford quay and the sandy "blue flag" Avon beach.

34 Raven Way, Mundeford BH23 4BH

Price: £779,950

Tenure: Freehold

01425 274444

mundeford@winkworth.co.uk

## Situation:

The property is situated within easy reach of some of the area's most beautiful beaches and unspoilt coastline with Mundeford's sandy Avon Beach and Friars Cliff Beach easily accessible. Mundeford Quay is a short walk away.

A short car ride from the property is the New Forest National Park offering some of the country's most stunning countryside interwoven with ancient woodlands.

The nearby historic town of Christchurch has a wide range of shops, restaurants and banks. More extensive facilities can be found further afield at Bournemouth and Southampton.

Christchurch Railway Station provides a fast and regular service to Bournemouth, Southampton and London Waterloo. Bournemouth and Southampton International Airports are also within a short drive.

## Description:

Just a short walk from the picturesque Mundeford quay and sandy Avon beach, this executive style family home has been refurbished by the current owners and is presented in immaculate condition throughout.

Three bedrooms to the first floor with a "Jack & Jill" style en suite to the principal bedroom and bedroom two.

The master bedroom has a range of fitted wardrobes. This room could easily be split into two in order to provide a further bedroom upstairs.

Spacious lounge with side aspect bay window and feature fireplace

Separate dining room open plan to a fitted kitchen with french doors to the rear garden

The bespoke kitchen has been hand made and fitted with a range of base and eye level units and drawers with oak worktops and a breakfast bar to one side.

Ground floor study/further bedroom and separate cloakroom.

Detached double garage with eaves storage space and twin up and over garage doors. Off road parking for two vehicles.

The garden is mainly laid to lawn with a range of small shrubs and flowers. Large summer house to one side with light and power, gate providing access from the parking area to the garden.

There is small green opposite the property with a path running along the meandering River Mude which provides an excellent dog walk towards Mundeford Wood.

## Summary:

- Executive style home on the sought after Saxon Landing development in the heart of Mundeford
- Spacious lounge with bay window and feature fireplace
- Open plan kitchen/dining room with french doors to the garden, bespoke hand made kitchen units and oak worktops
- Three first floor double bedrooms with a "Jack & Jill" style en suite & separate family bathroom
- The spacious master bedroom can revert back to make four first floor bedrooms
- Ground floor study and cloakroom
- Amtico flooring to the entire ground floor
- Detached double garage & off road parking
- Large summer house
- Private & secluded rear garden
- BCP Council Tax - Band "F"



Winkworth  
for every step...



Winkworth  
for every step...

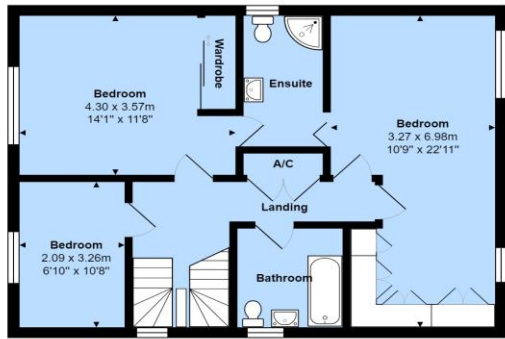


Winkworth  
for every step...

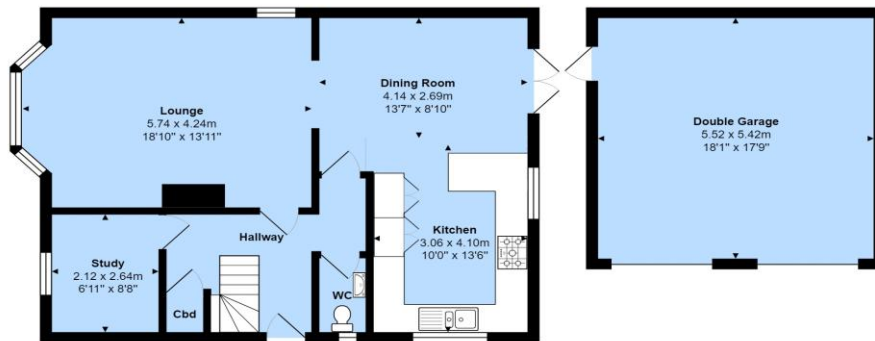


Winkworth  
for every step...





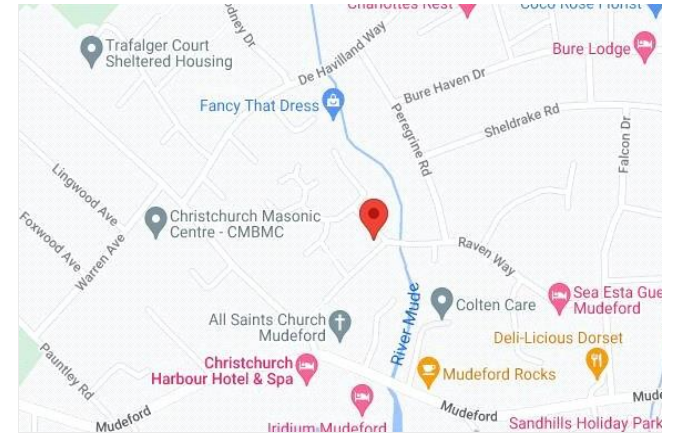
First Floor



Ground Floor



Total Area: 163.5 m<sup>2</sup> ... 1760 ft<sup>2</sup>  
 All measurements are approximate and for display purposes only



Energy Efficiency Rating		
	Current	Potential
Very energy efficient - lower running costs		
(92+) <b>A</b>		
(81-91) <b>B</b>		<b>84</b>
(69-80) <b>C</b>	<b>73</b>	
(55-68) <b>D</b>		
(39-54) <b>E</b>		
(21-38) <b>F</b>		
(1-20) <b>G</b>		
Not energy efficient - higher running costs		
<b>England, Scotland &amp; Wales</b>	EU Directive 2002/91/EC	

Winkworth wishes to inform prospective buyers and tenants that these particulars are a guide and act as information only. All our details are given in good faith and believed to be correct at the time of printing, but they don't form part of an offer or contract. No Winkworth employee has authority to make or give any representation or warranty in relation to this property. All fixtures and fittings, whether fitted or not are deemed removable by the vendor unless stated otherwise and room sizes are measured between internal wall surfaces, including furnishings.

Mudeford | 01425 274444 | mudeford@winkworth.co.uk

