





A large and rarely available four-bedroom townhouse sold with no onward chain. The property offers bright and spacious accommodation over three floors and a larger than average garden.

On the ground floor there is a modern kitchen and cloakroom towards the front. At the rear is a vast reception room providing ample space for both living and dining. Accessed through sliding doors is a huge garden, with generous space to fit an outbuilding, subject to standard planning consents.

The first floor comprises three bedrooms, all with built-in wardrobes, serviced by a bathroom. The master bedroom is found on the top floor with further fitted wardrobes and a family bathroom.



Features

- 4 Bedrooms
- Large Private Garden
- Off-Street Parking
- Chain Free

Freehold

Internal area

Total 1,481 sq. ft / 137.61 sq. m

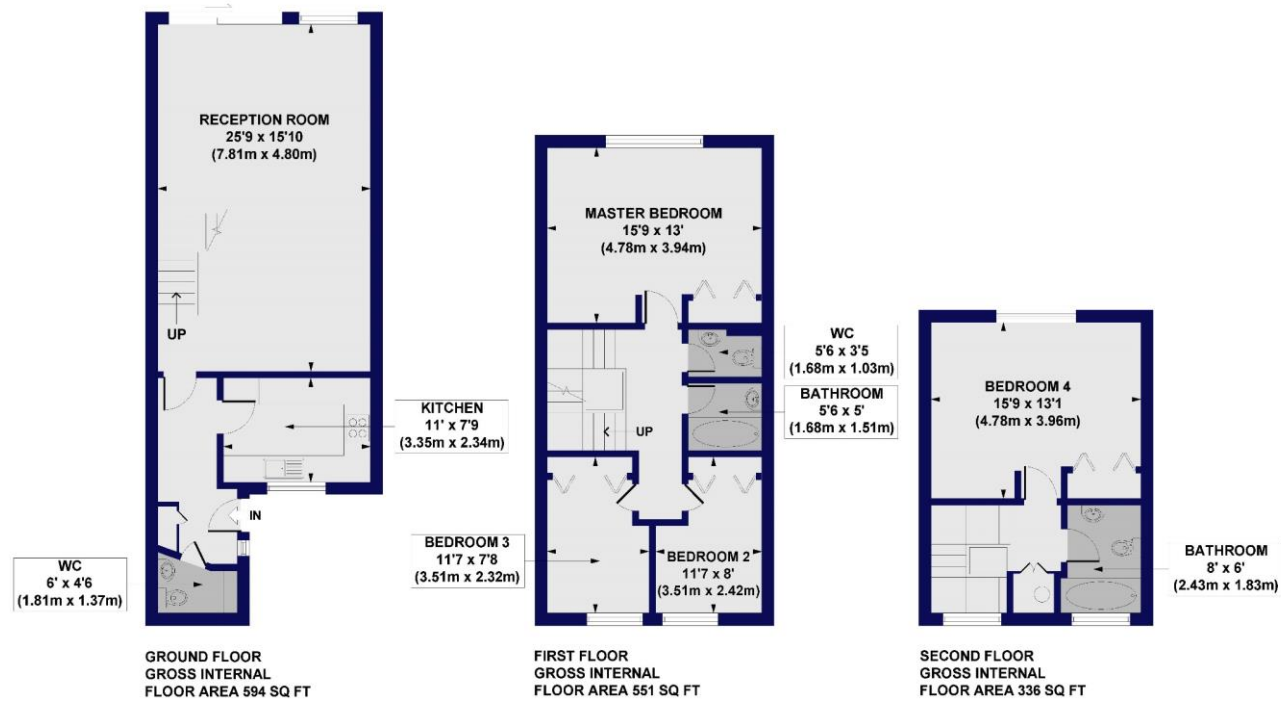
Price

£975,000



Whitefield Close, SW15

Approx. Gross Internal Floor Area 1481 sq. ft / 137.61 sq. m



All measurements of walls, doors, windows, fittings and appliances, including their size and location, are shown as standard sizes and do not constitute any warranty or representation by the seller, their agent or CP Creative. Any intending purchaser must satisfy himself by inspection or otherwise as to the correctness of the information contained in these plans. This plan is for illustrative purposes only and should be used as such by any prospective purchasers.