



PROJECTION EAST, READING, BERKSHIRE, RG1 1EG
£1,550 PER MONTH FURNISHED

MODERN GROUND FLOOR TWO BEDROOM APARTMENT SITUATED IN THE HEART OF THE TOWN CENTRE

Reading | 0118 4022 300 | reading@winkworth.co.uk

Winkworth

for every step...

winkworth.co.uk



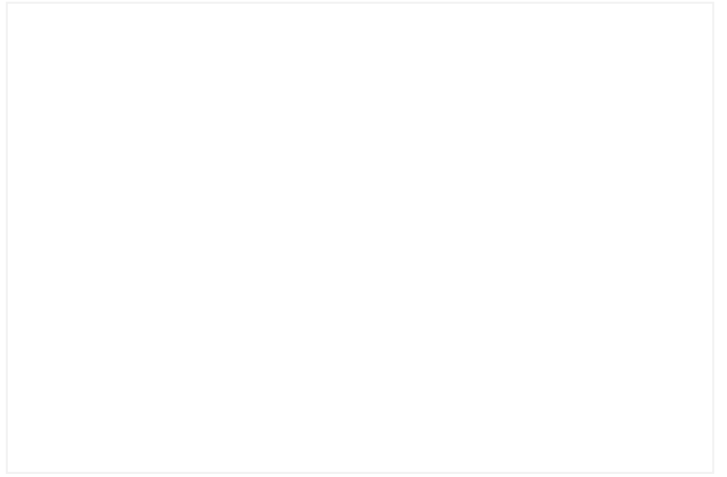
DESCRIPTION:

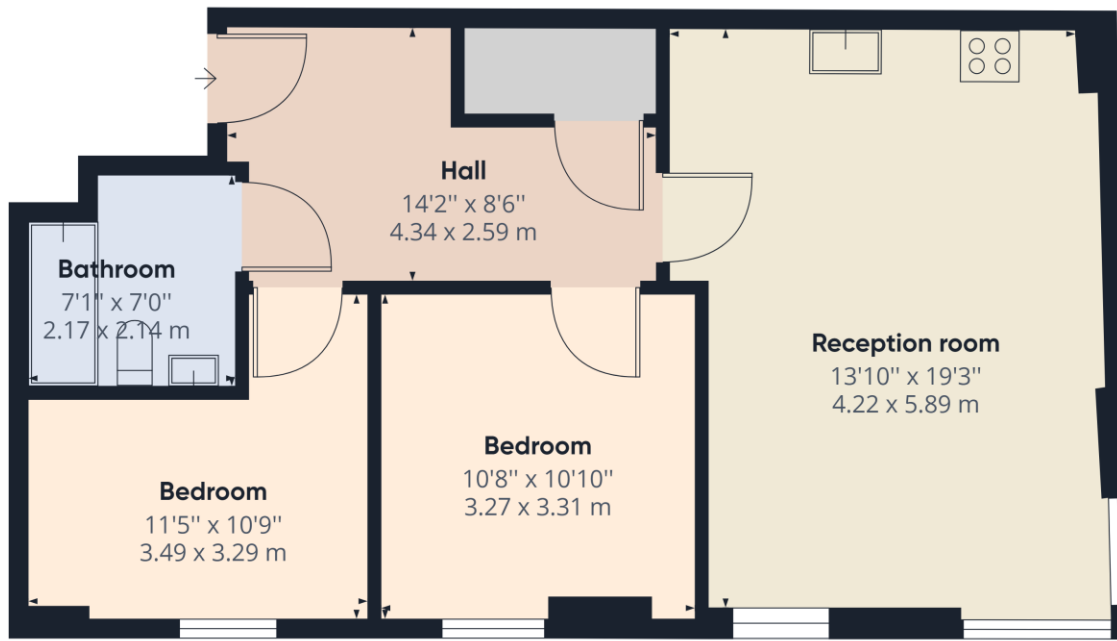
Modern ground floor two bedroom apartment situated in the heart of the town centre, a short walk to Reading train station and the oracle shopping complex. The property comprises open plan living room with fitted kitchen, two double bedrooms and a three piece bathroom. (No parking) Available 7th December 2024. Furnished.

AT A GLANCE

- Two bedroom apartment
- Town centre location
- Ground floor
- Council tax band C
- No parking
- Available 7th December
- Furnished







Approximate total area⁽¹⁾
646.43 ft²
60.06 m²

(1) Excluding balconies and terraces

While every attempt has been made to ensure accuracy, all measurements are approximate, not to scale. This floor plan is for illustrative purposes only.

GIRAFFE360

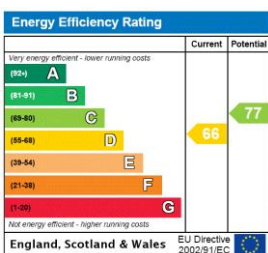
This floorplan is for illustration purposes only and is not to scale. The position and size of doors, windows, appliances and other features are approximate.

Deposit: £1,788.46

Holding Deposit: £357.69

Council Tax Band: C

Where no figures are shown, we have been unable to ascertain the information. All figures that are shown were correct at the time of printing.



Reading | 0118 4022 300 | reading@winkworth.co.uk



for every step...

winkworth.co.uk

Winkworth wishes to inform prospective buyers and tenants that these particulars are a guide and act as information only. All our details are given in good faith and believed to be correct at the time of printing but they don't form part of an offer or contract. No Winkworth employee has authority to make or give any representation or warranty in relation to this property. All fixtures and fittings, whether fitted or not are deemed removable by the vendor unless stated otherwise and room sizes are measured between internal wall surfaces, including furnishings.