



WENTWORTH ROAD, NW11  
£1,256,000 FREEHOLD

## A VERY SPACIOUS 6 BEDROOM FAMILY HOUSE CLOSE TO GOLDERS GREEN STATION

Golders Green | 020 8458 8313 | goldersgreen@winkworth.co.uk

**Winkworth**

for every step...

[winkworth.co.uk](http://winkworth.co.uk)



## DESCRIPTION:

We are delighted to offer this bright and spacious 6 bedroom, 2 bathroom family home. The properties accommodation is over 3 floors and it has excellent proportion throughout. Wentworth Road is located off Ravenscroft Avenue and is ideally positioned for access to Golders Green tube station, shops and local amenities both at Golders Green and Temple Fortune and also within close proximity of the Hampstead Heath extension.



**Winkworth**

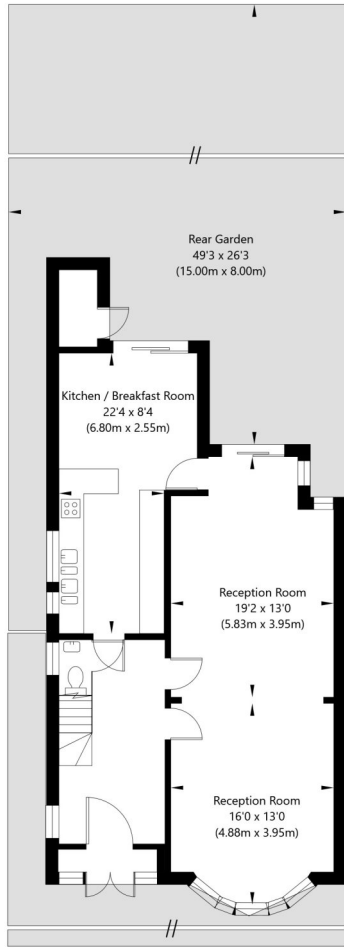
for every step...



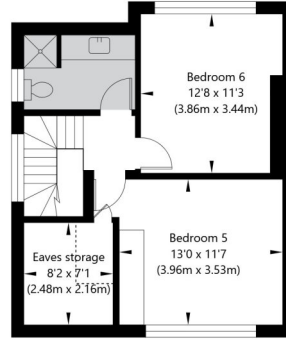
**Winkworth**

for every step...

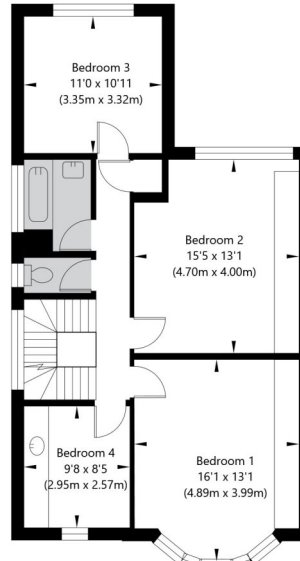
# Wentworth Road, London, NW11 0RT



Ground Floor  
GROSS INTERNAL FLOOR AREA  
APPROX. 77.83 SQ M / 838 SQ FT



Loft  
GROSS INTERNAL FLOOR AREA  
APPROX. 45.83 SQ M / 493 SQ FT



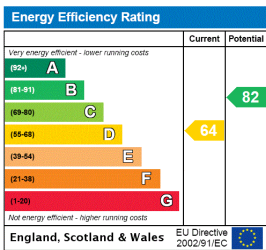
First Floor  
GROSS INTERNAL FLOOR AREA  
APPROX. 72.86 SQ M / 784 SQ FT



APPROXIMATE GROSS INTERNAL FLOOR AREA 196.52 SQ M / 2115 SQ FT  
THIS FLOOR PLAN IS FOR ILLUSTRATIVE PURPOSES ONLY AND  
SHOULD BE USED FOR THIS PURPOSE BY PROSPECTIVE APPLICANTS AS ITS NOT TO SCALE.

(c) AMBERSHORE PIX LIMITED / PHOTO - VIDEO - FLOOR PLANS / 0800 999 1577 / WWW.AMERSHOREPIX.CO.UK

This floorplan is for illustration purposes only and is not to scale. The position and size of doors, windows, appliances and other features are approximate.



Golders Green | 020 8458 8313 | goldersgreen@winkworth.co.uk



for every step...

winkworth.co.uk

Winkworth wishes to inform prospective buyers and tenants that these particulars are a guide and act as information only. All our details are given in good faith and believed to be correct at the time of printing but they don't form part of an offer or contract. No Winkworth employee has authority to make or give any representation or warranty in relation to this property. All fixtures and fittings, whether fitted or not are deemed removable by the vendor unless stated otherwise and room sizes are measured between internal wall surfaces, including furnishings.