



ABBOTSWOOD ROAD, EAST DULWICH, LONDON, SE22
OIEO £600,000 FREEHOLD

A LOVELY TWO-BEDROOM TERRACED HOUSE SITUATED ON A QUIET CUL-DE-SAC IN EAST DULWICH.

Dulwich | 020 8299 2722 | dulwich@winkworth.co.uk

Tenure Freehold | Council Tax Band D – London Borough of Southwark |

Winkworth

winkworth.co.uk

See things differently



DESCRIPTION:

A lovely two-bedroom terraced house situated on a quiet cul-de-sac close to East Dulwich Station and bars and restaurants on Lordship Lane.

The property comprises of two double bedrooms, a bathroom, kitchen and a reception with doors leading out onto a good-sized garden. The property also comes with off-street parking.

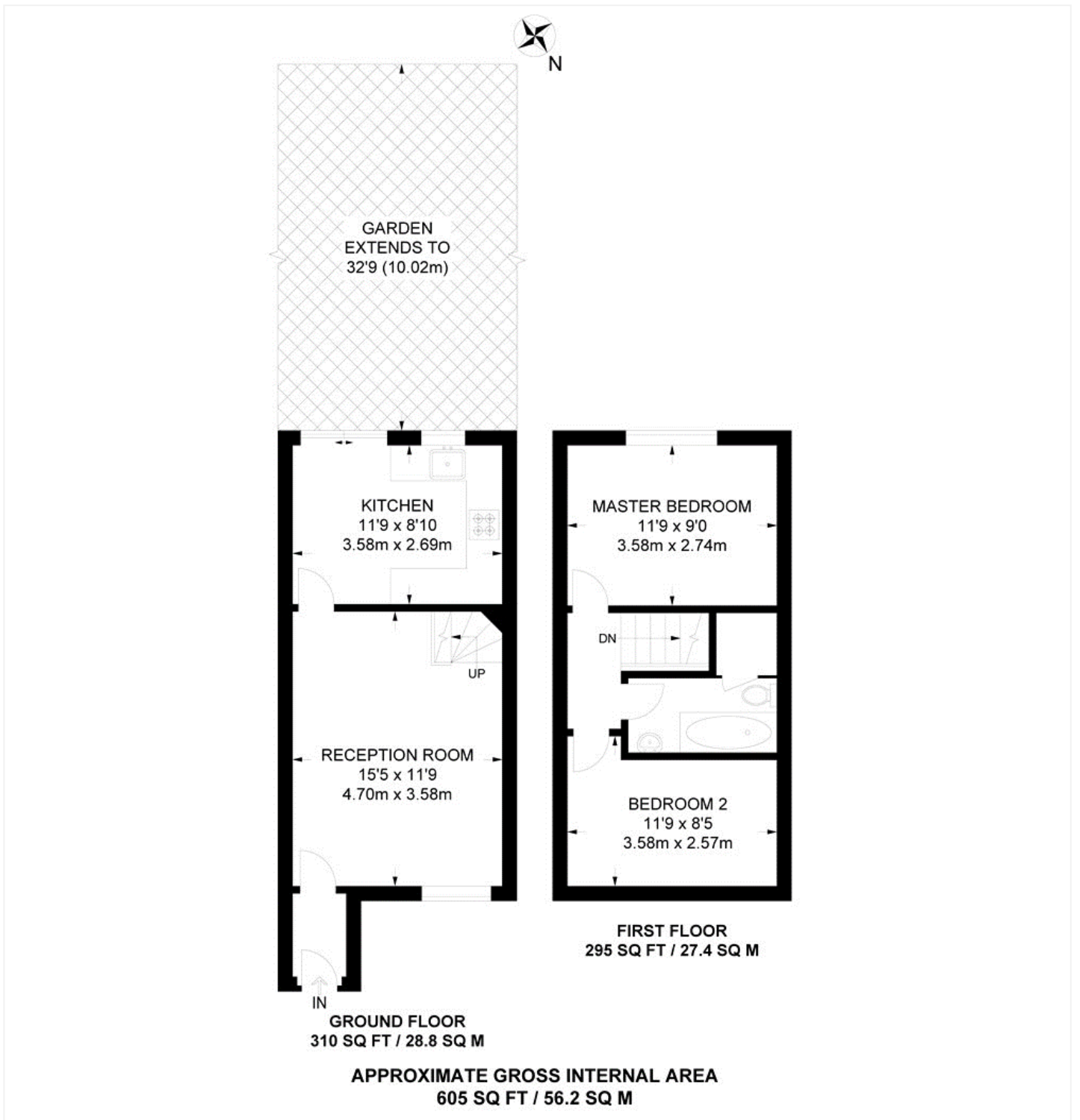
The property benefits from being within easy access to both Lordship Lane in East Dulwich and Bellenden Road in Peckham Rye. A short walk to East Dulwich station with direct links to London Bridge within 11 minutes, or a short 4-minute bus ride to Denmark Hill station with connections on the over ground to Clapham Junction, Victoria and other major London terminals. This is a fantastic family home in a wonderful location and early viewings are highly advised.

AT A GLANCE

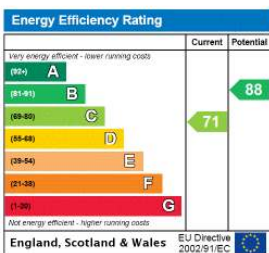
- Two Double Bedrooms
- Modern Bathroom & Kitchen
- Rear Garden
- Off-Street Parking
- Great Transport Links
- Close to Bars & Restaurants







This floorplan is for illustration purposes only and is not to scale. The position and size of doors, windows, appliances and other features are approximate.



Dulwich | 020 8299 2722 | dulwich@winkworth.co.uk



winkworth.co.uk

See things differently

Winkworth wishes to inform prospective buyers and tenants that these particulars are a guide and act as information only. All our details are given in good faith and believed to be correct at the time of printing but they don't form part of an offer or contract. No Winkworth employee has authority to make or give any representation or warranty in relation to this property. All fixtures and fittings, whether fitted or not are deemed removable by the vendor unless stated otherwise and room sizes are measured between internal wall surfaces, including furnishings.