



TOWER RISE, RICHMOND, SURREY, TW9
£4,200 PER MONTH UNFURNISHED

A WELL PRESENTED FOUR-BEDROOM FAMILY HOME IN RICHMOND UPON THAMES.

Chiswick | 020 8994 7096 | chiswick@winkworth.co.uk

Winkworth

for every step...

winkworth.co.uk



DESCRIPTION:

Situated in a particularly desirable road in Richmond upon Thames is this well presented and very stylish four-bedroom family home.

Accommodation includes an open plan kitchen dining room leading out onto the rear garden, a downstairs cloakroom, garage, First floor reception room, Master bedroom with en-suite shower room, second floor three further bedrooms and main bathroom.

Well located for excellent access Richmond station, with its fast connections to London Waterloo, plus District Line Underground and Overground services, the town centre, and Old Deer Park, whilst Kew Gardens and Richmond Park are also nearby.

Council tax: Band G Richmond Upon Thames

EPC: C

1 week holding deposit: £969.23

6 week security deposit: £5,815.38

ACCOMMODATION

Long Let

4 Bedrooms

1 Reception Room

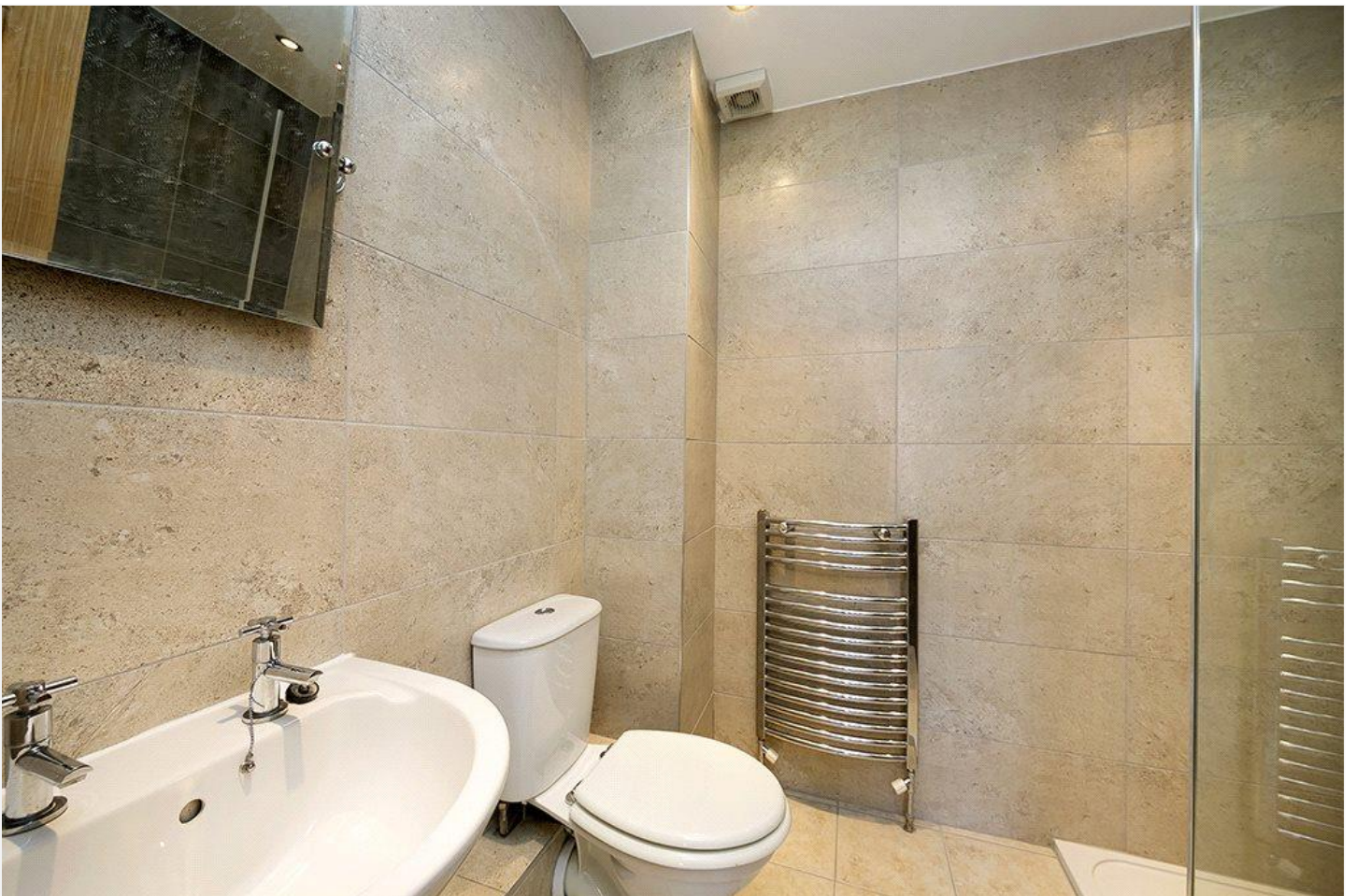
2 Bathrooms

Garden

Off Street Parking

Garage

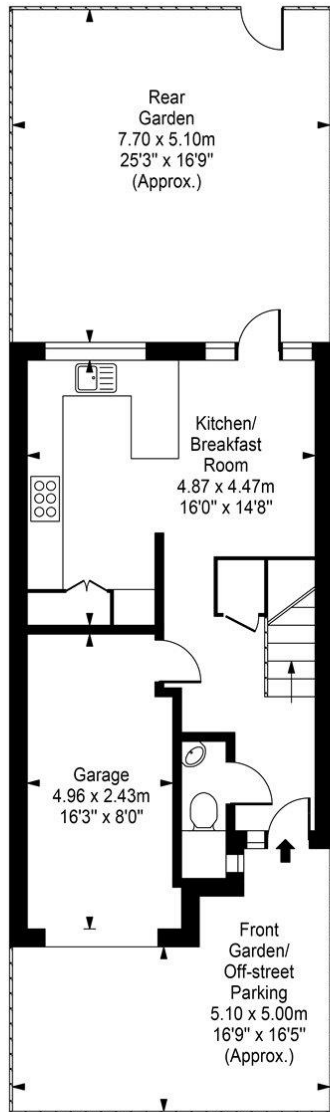
Unfurnished



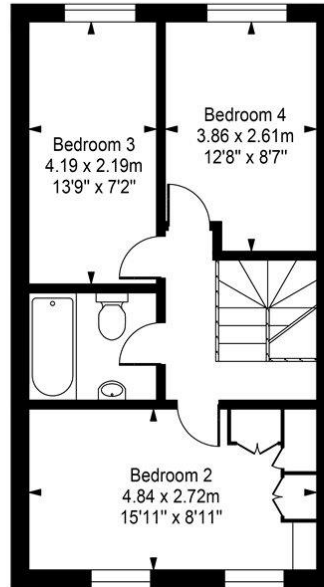


Tower Rise

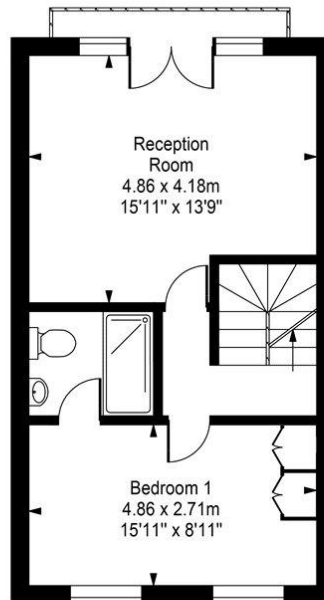
Approx. Gross Internal Area
131 Sq M - 1410 Sq Ft



Ground Floor



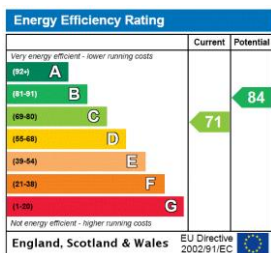
Second Floor



First Floor

Every attempt is made to assure accuracy, however measurements are approximate and for illustrative purposes only. Not to scale.
Floor plan by www.frameworkphotos.co.uk

This floorplan is for illustration purposes only and is not to scale. The position and size of doors, windows, appliances and other features are approximate.



Deposit: £4,846.15

Holding Deposit:

Council Tax Band: G

Where no figures are shown, we have been unable to ascertain the information. All figures that are shown were correct at the time of printing.

Chiswick | 020 8994 7096 | chiswick@winkworth.co.uk



for every step...

winkworth.co.uk

Winkworth wishes to inform prospective buyers and tenants that these particulars are a guide and act as information only. All our details are given in good faith and believed to be correct at the time of printing but they don't form part of an offer or contract. No Winkworth employee has authority to make or give any representation or warranty in relation to this property. All fixtures and fittings, whether fitted or not are deemed removable by the vendor unless stated otherwise and room sizes are measured between internal wall surfaces, including furnishings.