

MARKHAM SQUARE | SW3



Winkworth



Markham Square SW3

RENT: £3,950pw / £17,116.66pcm

- 5 Bedrooms
- 5 Bathrooms
- Terraced House
- Patio, Balcony
- Resident Parking
- Unfurnished

LOCAL AUTHORITY: Royal Borough of Kensington & Chelsea

COUNCIL TAX BAND: Band H



Energy Efficiency Rating

	Current	Potential
<i>Very energy efficient - lower running costs</i>		
(92+) A		
(81-91) B		
(69-80) C		76
(55-68) D	62	
(39-54) E		
(21-38) F		
(1-20) G		
<i>Not energy efficient - higher running costs</i>		
England, Scotland & Wales	EU Directive 2002/91/EC	

Knightsbridge & Chelsea | 020 7589 6616
knightsbridge@winkworth.co.uk

Winkworth

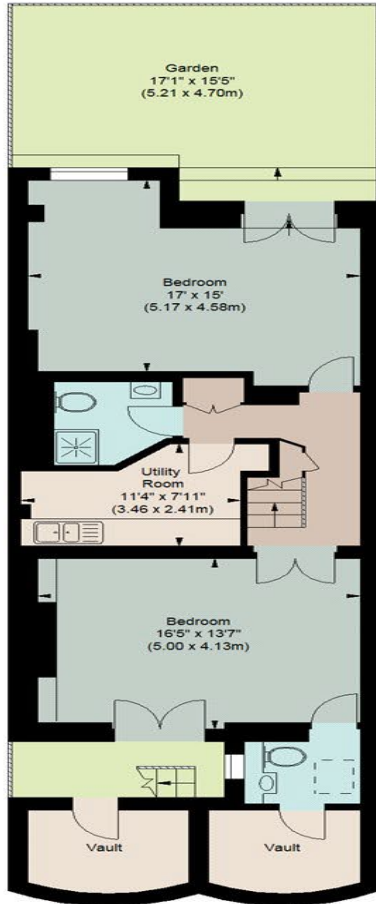
for every step...

winkworth.co.uk

Winkworth wishes to inform prospective buyers and tenants that these particulars are a guide and act as information only. All our details are given in good faith and believed to be correct at the time of printing but they don't form part of an offer or contract. No Winkworth employee has authority to make or give any representation or warranty in relation to this property. All fixtures and fittings, whether fitted or not are deemed removable by the vendor unless stated otherwise and room sizes are measured between internal wall surfaces, including furnishings.

MARKHAM SQUARE, SW3

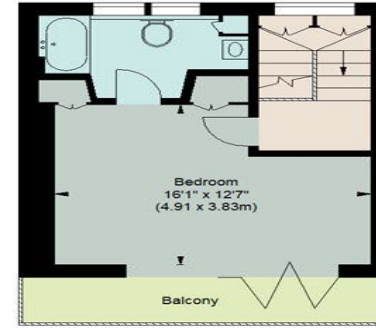
Approximate gross internal area
(Including Vaults)
2887 sq ft / 268.20 sq m
Vaults
9.75 sq ft / 105 sq m



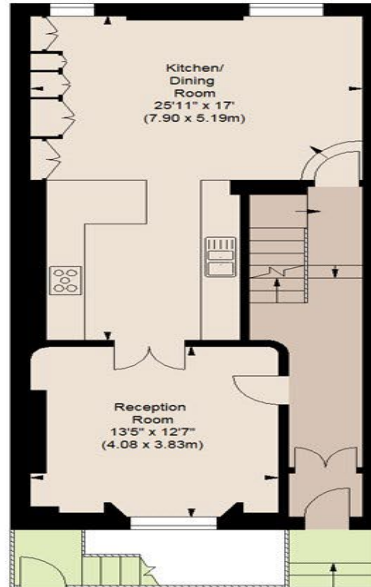
LOWER GROUND FLOOR
(824 sq ft.)



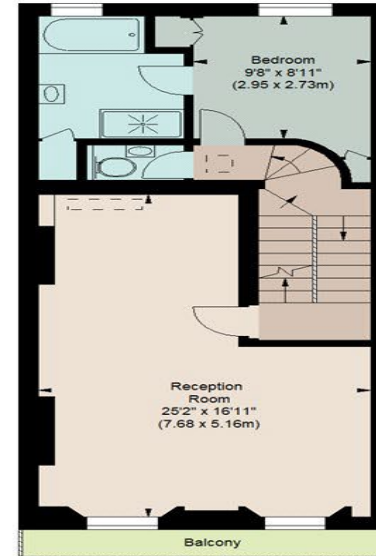
SECOND FLOOR
(425 sq ft.)



THIRD FLOOR
(322 sq ft.)



RAISED GROUND FLOOR
(653 sq ft.)



FIRST FLOOR
(663 sq ft.)

The floor plan is not to scale and measurements and areas shown are approximate and therefore should be used for illustrative purposes only. The plan has been prepared in accordance with the RICS code of Measuring Practice and whilst we have confidence in the information produced, it must not be relied on. If there is any aspect of particular importance, you should carry out or commission your own inspection of the property.
Copyright of FeaturePRO.