



**MUSTOW PLACE, PARSONS GREEN/ FULHAM, LONDON, SW6**  
**£1,000,000 FREEHOLD**

A charming three bedroom, two bathroom, well-proportioned house located in this popular residential development located in the heart of Parsons Green.

Fulham & Parsons Green | 020 7731 3388 | [fulham@winkworth.co.uk](mailto:fulham@winkworth.co.uk)

**Winkworth**

for every step...

[winkworth.co.uk](http://winkworth.co.uk)



## DESCRIPTION:

The property benefits from a light and bright reception room, which has a dining area, perfect for entertaining. Doors lead out onto the garden which attracts ample sun with it being a south west facing garden. The kitchen is located at the front of the house and there is also a downstairs cloakroom on this floor.

On the first floor you will find the master bedroom featuring an en suite bathroom room, two further bedrooms and a full family bathroom with a separate shower and bath. There is ample storage throughout and the property comes with off street parking.

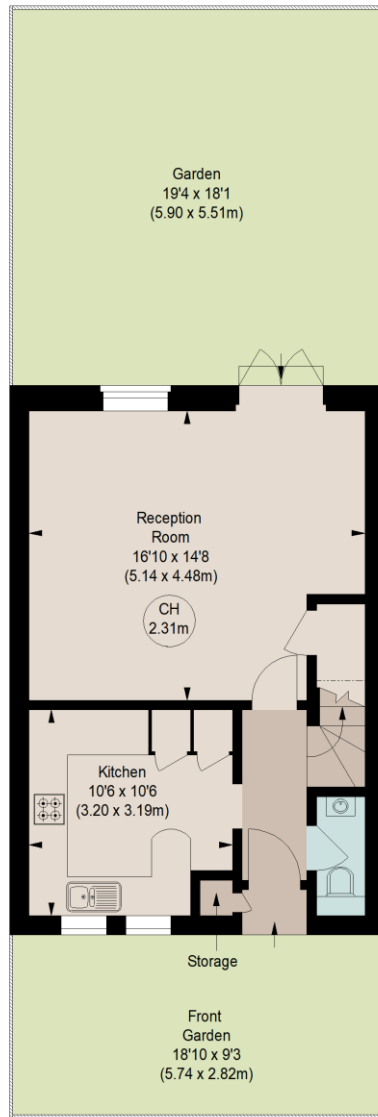
Mustow Place is located on the Munster Road, conveniently located for the many shops and amenities along Fulham Road and New Kings Road. The nearest underground station is Parsons Green (District Line) and there are many accessible bus routes close by.



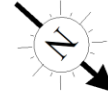


## MUSTOW PLACE, SW6

Approximate gross internal area  
884 sq ft / 82.12 sq m

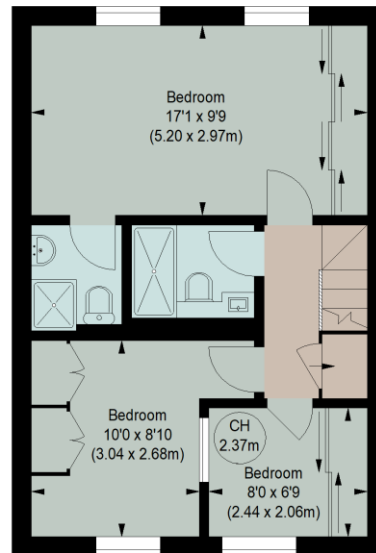


**GROUND FLOOR**



Key :

CH - Ceiling Height



**FIRST FLOOR**

The floor plan is not to scale and measurements and areas shown are approximate and therefore should be used for illustrative purposes only.

The plan has been prepared in accordance with the RICS code of Measuring Practice and whilst we have confidence in the information produced, it must not be relied on.

If there is any aspect of particular importance, you should carry out or commission your own inspection of the property.

This floorplan is for illustration purposes only and is not to scale. The position and size of doors, windows, appliances and other features are approximate.

Fulham & Parsons Green | 020 7731 3388 | fulham@winkworth.co.uk

**Winkworth**

for every step...

[winkworth.co.uk](http://winkworth.co.uk)

Winkworth wishes to inform prospective buyers and tenants that these particulars are a guide and act as information only. All our details are given in good faith and believed to be correct at the time of printing but they don't form part of an offer or contract. No Winkworth employee has authority to make or give any representation or warranty in relation to this property. All fixtures and fittings, whether fitted or not are deemed removable by the vendor unless stated otherwise and room sizes are measured between internal wall surfaces, including furnishings.