



BAWDALE ROAD, EAST DULWICH, SE22
£650,000 SHARE OF FREEHOLD

A CHARMING, TWO DOUBLE BEDROOM SPLIT LEVEL MAISONETTE SITUATED ON A PRIME ROAD IN SE22.

Dulwich | 020 8299 2722 | dulwich@winkworth.co.uk

Winkworth

Tenure Share Of Freehold 997 years approx. | Council Tax Band C – London Borough of Southwark | Service Charge - None | Ground Rent - None

winkworth.co.uk

See things differently



DESCRIPTION:

A charming, split level maisonette situated on a prime road in SE22. This beautiful flat is situated on one of East Dulwich's most sought-after roads. The property occupies the top two floors of a period townhouse. The property boasts an impressive front reception, complete with original fireplace, high ceilings and lots of natural light. The kitchen is situated just behind, boasting a fully fitted kitchen with wooden worktops and all finished to a tasteful standard. The upper floor provides a family bathroom and two spacious double bedroom, both finished to a high standard. The flat is on a quiet side street but is just around the corner from Lordship Lane, with its fantastic array of shops, bars and restaurants, as well as a cinema and gym. Goose Green, Peckham Rye Park and Dulwich Park are all within a 10-minute walk and transport links can be found within a short walk to East Dulwich (for London Bridge) or a short bus journey to Denmark Hill or Peckham Rye for the Overground. The property benefits from a Share of the Freehold and the potential to extend into the loft STPP.

AT A GLANCE

- Two Double Bedrooms
- Split Level Maisonette
- Reception
- Modern Kitchen
- Modern Bathroom
- Share Of Freehold
- Potential To Extend Into The Loft STPP
- Central Location
- Excellent Transport Links



Bawdale Road

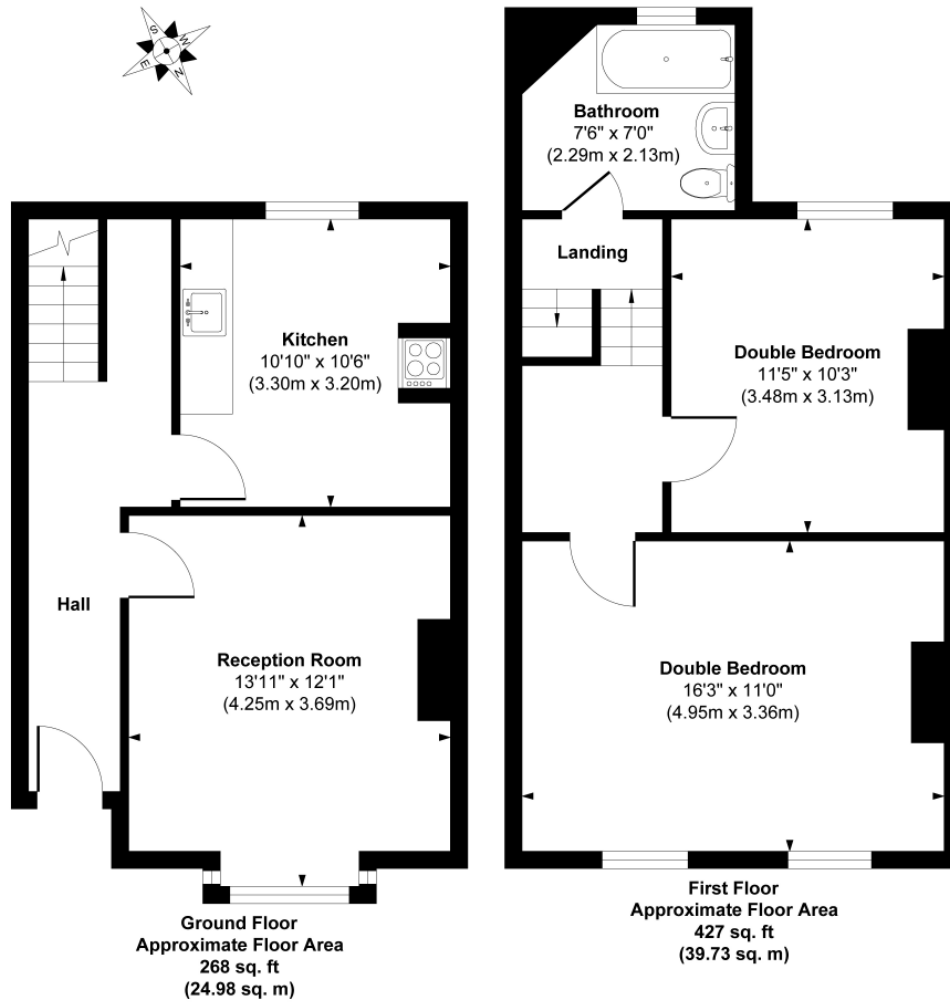
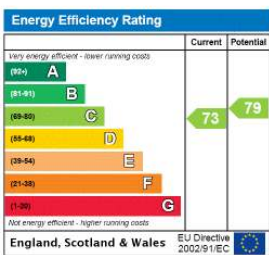


Illustration for identification purposes only, measurements are approximate, not to scale.
Produced by Elements Property

This floorplan is for illustration purposes only and is not to scale. The position and size of doors, windows, appliances and other features are approximate.



Dulwich | 020 8299 2722 | dulwich@winkworth.co.uk



winkworth.co.uk

See things differently

Winkworth wishes to inform prospective buyers and tenants that these particulars are a guide and act as information only. All our details are given in good faith and believed to be correct at the time of printing but they don't form part of an offer or contract. No Winkworth employee has authority to make or give any representation or warranty in relation to this property. All fixtures and fittings, whether fitted or not are deemed removable by the vendor unless stated otherwise and room sizes are measured between internal wall surfaces, including furnishings.