



AYCLIFFE ROAD, WD6

£280,000 FREEHOLD

A WELL PRESENTED ONE BEDROOM CLUSTER HOUSE WITH PARKING AND GARDEN

Borehamwood | 020 8953 8899 | borehamwood@winkworth.co.uk



DESCRIPTION:

Having recently been subject to an extensive schedule of refurbishment both internally and externally this one bedroom cluster house is presented for sale in good order throughout.

A generous section of own rear garden and an allocated parking space nearby compliment the internal accommodation and make this an ideal purchase for a first time buyer or downsizer.

AT A GLANCE

- 1 Bedroom
- Recently Refurbished
- Freehold Cluster House
- Garden
- Allocated Parking Space
- Gas Central Heating
- Double Glazed
- 450 Square Feet





Approximate Gross Internal Area = 41.8 sq m / 450 sq ft

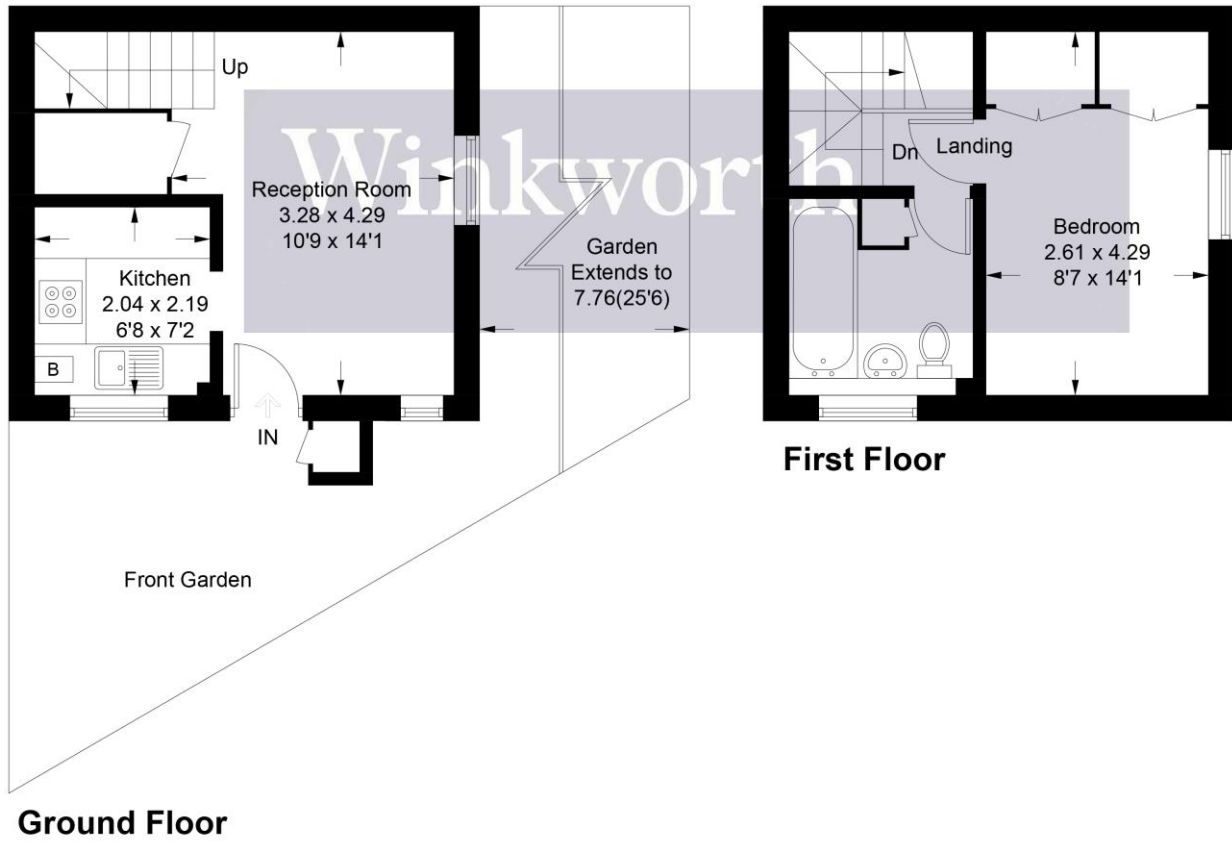
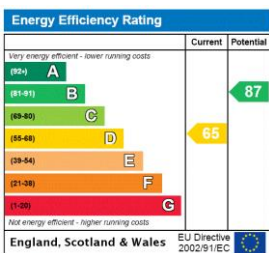


Illustration for identification purposes only, measurements are approximate, not to scale. Winkworth © 2023 (ID993966)

This floorplan is for illustration purposes only and is not to scale. The position and size of doors, windows, appliances and other features are approximate.



Tenure: Freehold

Term: 0 year and 0 months

Service Charge: £0 per annum

Ground Rent: £ 0 Annually (subject to increase)

Council Tax Band: C

Where no figures are shown, we have been unable to ascertain the information. All figures that are shown were correct at the time of printing.