



ST. CHARLES SQUARE, W10
£400,000 LEASEHOLD

A BRIGHT SECOND FLOOR ONE BEDROOM FLAT WITH PRIVATE BALCONY

North Kensington | 020 7792 5000 | northkensington@winkworth.co.uk

Winkworth

for every step...

winkworth.co.uk



DESCRIPTION:

This one-bedroom apartment is set on the second floor of this purpose-built block in Ladbroke Grove. The flat comprises of a large bright reception room, a good-sized double bedroom with excellent storage, separate kitchen and a bathroom with shower over bath. The property further benefits from a private balcony, communal gardens and an option to apply for off street parking.

St. Charles Square is located moments from the amenities of Ladbroke Grove, the shops and excitement of Golborne Road and Portobello Road. The nearest tube station is Ladbroke Grove (Circle and Hammersmith and City) within walking distance, and there are buses taking you all over London within in minutes.

AT A GLANCE

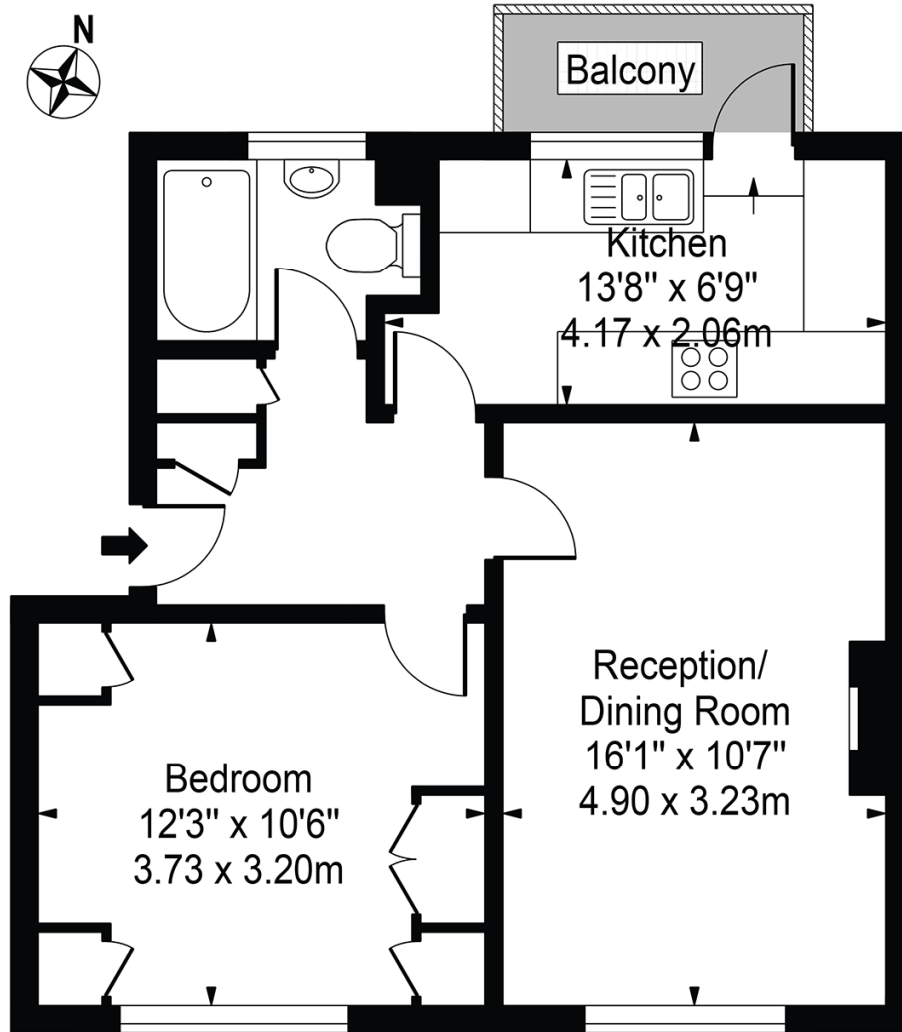
- Large One Bedroom Flat
- Good Sized Separate Kitchen
- Bright
- Good Condition
- Excellent Storage
- EPC Rating D
- Leasehold 209 Years Remaining
- Ground Rent £10 pa
- Service Charges £1,322 pa





Burleigh House

Approx. Gross Internal Area 497 Sq Ft - 46.17 Sq M
 Approx. External Area Of Balcony 27 Sq Ft - 2.51 Sq M

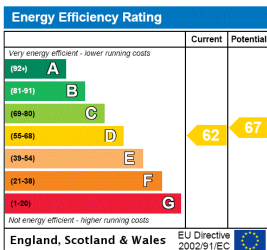


Second Floor

For Illustration Purposes Only - Not To Scale

This floor plan should be used as a general outline for guidance only and does not constitute in whole or in part an offer or contract. Any intending purchaser or lessee should satisfy themselves by inspection, searches, enquiries and full survey as to the correctness of each statement. Any areas, measurements or distances quoted are approximate and should not be used to value a property or be the basis of any sale or let.
 Copyright Morriarti Photography & Design LTD

This floorplan is for illustration purposes only and is not to scale. The position and size of doors, windows, appliances and other features are approximate.



North Kensington | 020 7792 5000 | northkensington@winkworth.co.uk



for every step...

winkworth.co.uk

Winkworth wishes to inform prospective buyers and tenants that these particulars are a guide and act as information only. All our details are given in good faith and believed to be correct at the time of printing but they don't form part of an offer or contract. No Winkworth employee has authority to make or give any representation or warranty in relation to this property. All fixtures and fittings, whether fitted or not are deemed removable by the vendor unless stated otherwise and room sizes are measured between internal wall surfaces, including furnishings.