



**FLAT 41, APPLESRAW HOUSE, CHAMPION HILL ESTATE, CAMBERWELL, LONDON, SE5
£275,000 LEASEHOLD**

SITUATED ON THE TOP FLOOR IS THIS SPACIOUS ONE DOUBLE BEDROOM FLAT.

DESCRIPTION:

Situated on the top floor is this spacious one double bedroom flat. Boasting a spacious reception, complete with a private balcony with views over the gardens and building tops of Dulwich. A large, fully fitted kitchen, with extensive countertop space, storage and free standing appliances. A large double bedroom and spacious bathroom. The location offers fantastic access to the shops, bars and restaurants on Lordship Lane as well as Bellenden Road and Camberwell Green. Transport links are provided via the overground service at Denmark Hill, direct links to London Bridge from East Dulwich station or multiple bus links within a short 3 or 4 minute walk.

AT A GLANCE

- One Double Bedroom
- Spacious Bathroom
- Top Floor Flat
- Private Balcony
- Fantastic Location

Dulwich | 020 8299 2722 | dulwich@winkworth.co.uk

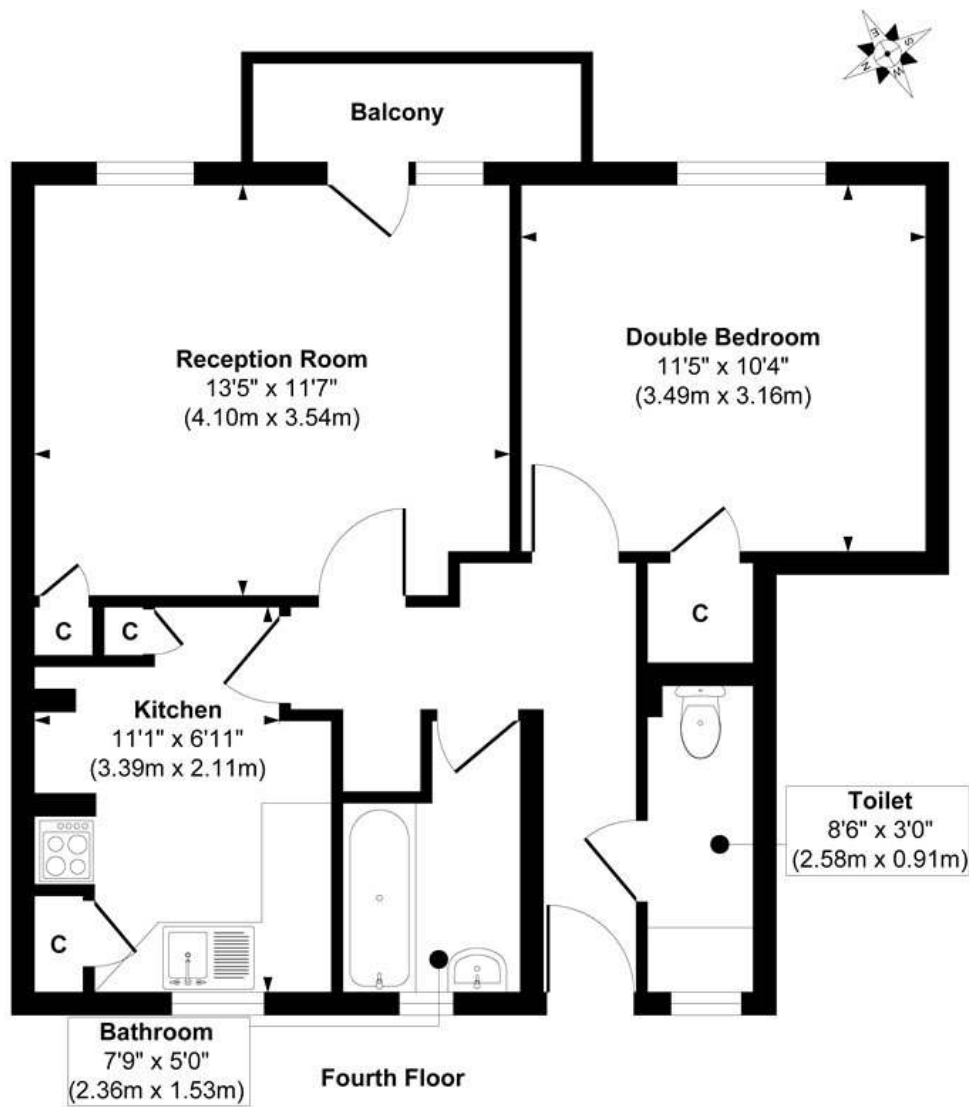
Tenure Leasehold | Council Tax Band A – London Borough of Southwark | Service Charge TBC | Ground Rent TBC

Winkworth





Appleshaw House



Approx. Gross Internal Floor Area 515 sq. ft / 47.86 sq. m
Illustration for identification purposes only, measurements are approximate, not to scale.
Produced by Elements Property

This floorplan is for illustration purposes only and is not to scale. The position and size of doors, windows, appliances and other features are approximate.

Awaiting EPC

Dulwich | 020 8299 2722 | dulwich@winkworth.co.uk

Winkworth

winkworth.co.uk

See things differently

Winkworth wishes to inform prospective buyers and tenants that these particulars are a guide and act as information only. All our details are given in good faith and believed to be correct at the time of printing but they don't form part of an offer or contract. No Winkworth employee has authority to make or give any representation or warranty in relation to this property. All fixtures and fittings, whether fitted or not are deemed removable by the vendor unless stated otherwise and room sizes are measured between internal wall surfaces, including furnishings.